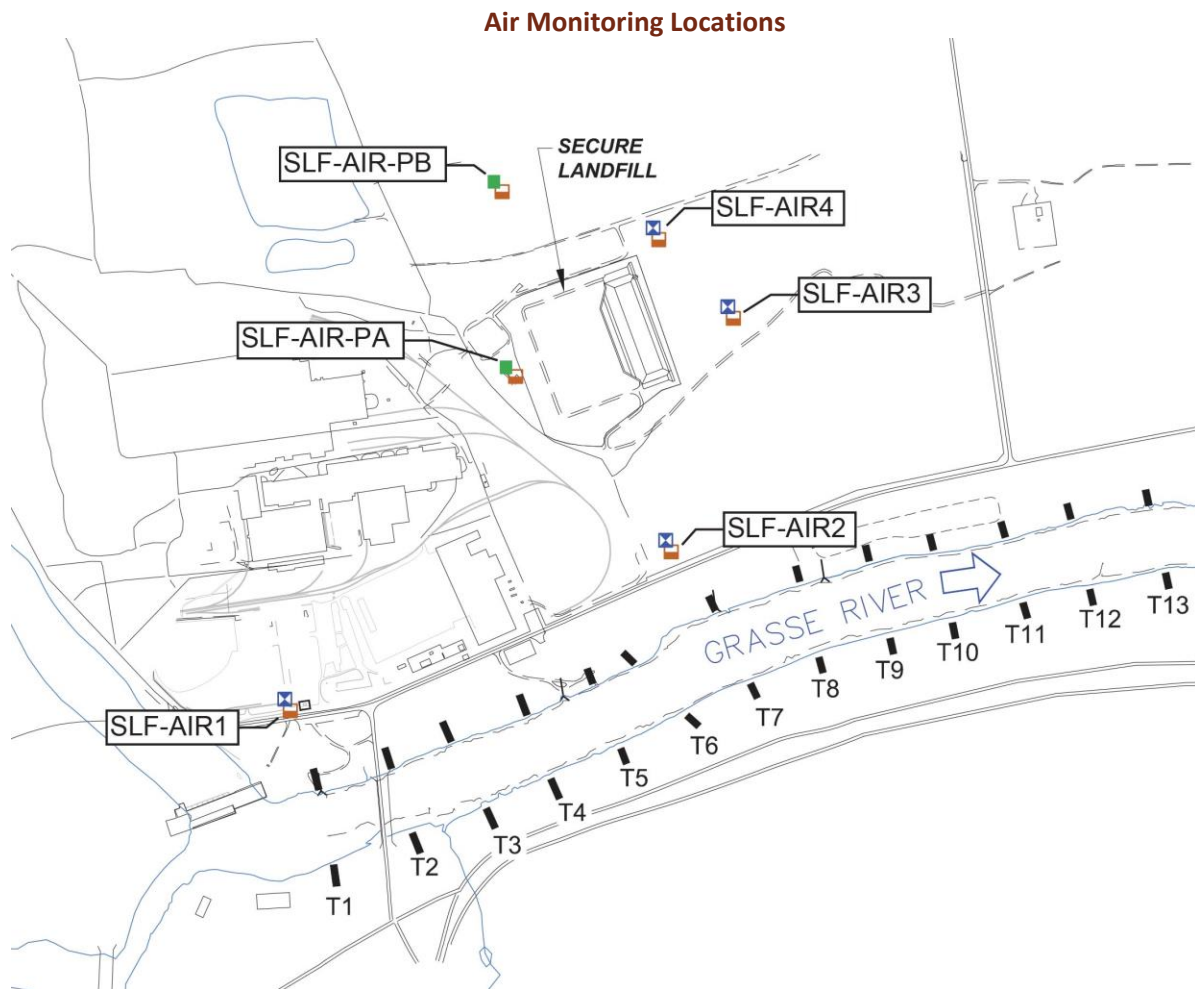


May – June 2018

Air Monitoring - 2018 Secure Landfill Construction and Operation

Program includes particulate monitoring using real-time meters for particulates (or dust) and volatile organic compounds (VOCs) and sampling for PCB analytical testing. Corrective action levels have been established based on levels that are safe for the community for particulates, VOCs, and PCBs. The actual monitoring results are compared to the corrective action levels to determine if adjustments in construction are needed. The air monitoring locations and tabulated results are provided below.



2018 Air Particulate Data

(Corrective Action Level = 0.150 milligram per cubic meter above upwind location)

		Monitoring Station ID (see figure)						
Date	Action Level Check	SLF-AIR1	SLF-AIR2	SLF-AIR3	SLF-AIR4	SLF-AIR-PA	SLF-AIR-PB	Notes
Jun 9	All Below	0.0215	0.0251	0.0272	0.0395	0.0096	0.03	--
Jun 10	All Below	0.0166	0.0157	0.0205	0.0257	--	--	--
Jun 11	All Below	0.2228	0.0127	0.0197	0.0091	--	--	SLF-AIR1 levels not related to field activities.
Jun 12	All Below	0.0109	0.0935	0.0201	0.0073	--	--	--
Jun 13	All Below	0.0129	0.011	0.013	0.0726	--	--	--
Jun 14	All Below	0.0169	0.0964	0.0177	0.0127	--	--	--
Jun 15	All Below	0.0132	0.0096	0.0131	0.0072	--	--	--
Jun 16	All Below	0.0139	0.0195	0.0181	0.0165	--	--	--
Jun 17	All Below	0.0121	0.013	0.0131	0.0127	--	--	--
Jun 18	All Below	0.0211	0.0219	0.0235	0.0191	--	--	--
Jun 19	All Below	0.0473	0.0451	0.0471	0.0409	--	--	--
Jun 20	All Below	0.0195	0.1074	0.0249	0.0261	--	--	--
Jun 21	All Below	0.0143	0.0153	0.0144	0.0138	--	--	--
Jun 22	All Below	0.0221	0.0143	0.0475	0.0103	--	--	--
Jun 23	All Below	0.0139	0.016	0.0172	0.0134	--	--	--

		Monitoring Station ID (see figure)						
Date	Action Level Check	SLF-AIR1	SLF-AIR2	SLF-AIR3	SLF-AIR4	SLF-AIR-PA	SLF-AIR-PB	Notes
Jun 24	All Below	0.0199	0.0184	0.0207	0.0133	--	--	--
Jun 25	All Below	0.0173	0.0193	0.0185	0.016	--	--	--
Jun 26	All Below	0.0169	0.0121	0.0633	0.0076	--	--	--
Jun 27	All Below	0.0107	0.0105	0.0091	0.0081	--	--	--
Jun 28	All Below	0.0133	0.0201	0.0155	0.0141	--	--	--
Jun 29	All Below	0.0209	0.0226	0.0246	0.0155	--	--	--
Jun 30	All Below	0.0275	0.0317	0.03	0.0309	0.0381	0.0527	--

NA = Data not collected

Particulates (milligrams per cubic meter)

2018 Air Volatile Organic Compound Data (Corrective Action Level = 25 ppm above upwind location)

		Monitoring Station ID (see figure)						
Date	Action Level Check	SLF-AIR1	SLF-AIR2	SLF-AIR3	SLF-AIR4	SLF-AIR-PA	SLF-AIR-PB	Notes
Jun 9	All Below	0	0.3221	0.0991	0.0177	0	0.1945	--
Jun 10	All Below	0.048	0.1105	0.1239	0	--	--	--
Jun 11	All Below	0.0895	0.0977	0.1053	0.0243	--	--	--
Jun 12	All Below	0.0002	0.0047	0.1648	0.0238	--	--	--
Jun 13	All Below	0.1475	0.1691	0.1723	0	--	--	--

		Monitoring Station ID (see figure)						
Date	Action Level Check	SLF-AIR1	SLF-AIR2	SLF-AIR3	SLF-AIR4	SLF-AIR-PA	SLF-AIR-PB	Notes
Jun 14	All Below	0.0043	0.0917	0.0824	0.0476	--	--	--
Jun 15	All Below	0.1041	0	0.0075	0.0011	--	--	--
Jun 16	All Below	0.0691	0.0913	0.0561	0	--	--	--
Jun 17	All Below	0.0293	0.0448	0.0883	0.0382	--	--	--
Jun 18	All Below	0.0027	0.0233	0.0915	0.0192	--	--	--
Jun 19	All Below	0.2701	0.1618	0.0002	0.0441	--	--	--
Jun 20	All Below	0.2028	0.132	0	0.0443	--	--	--
Jun 21	All Below	0.0695	0	0.0583	0.0403	--	--	--
Jun 22	All Below	0.1413	0.0646	0.0282	0.0424	--	--	--
Jun 23	All Below	0.0585	0.0404	0.0653	2.7656	--	--	--
Jun 24	All Below	0.1031	0.092	0.0464	0.0162	--	--	--
Jun 25	All Below	0.3012	0.0831	0.0568	0.0665	--	--	--
Jun 26	All Below	0.0049	0	0.0133	0.0318	--	--	--
Jun 27	All Below	0	0.0002	0.0005	0.0004	--	--	--
Jun 28	All Below	0	0.0055	0.0023	0.0221	--	--	--
Jun 29	All Below	0.0538	0.0033	0.0466	0.0325	--	--	--
Jun 30	All Below	0.0489	0	0.0881	0.0285	0	1.0735	--

NA = Data not collected
 Volatile Organic Compounds (VOCs parts per million)

2018 Air PCB Data
Corrective Action Level = 0.100 micrograms per cubic meter

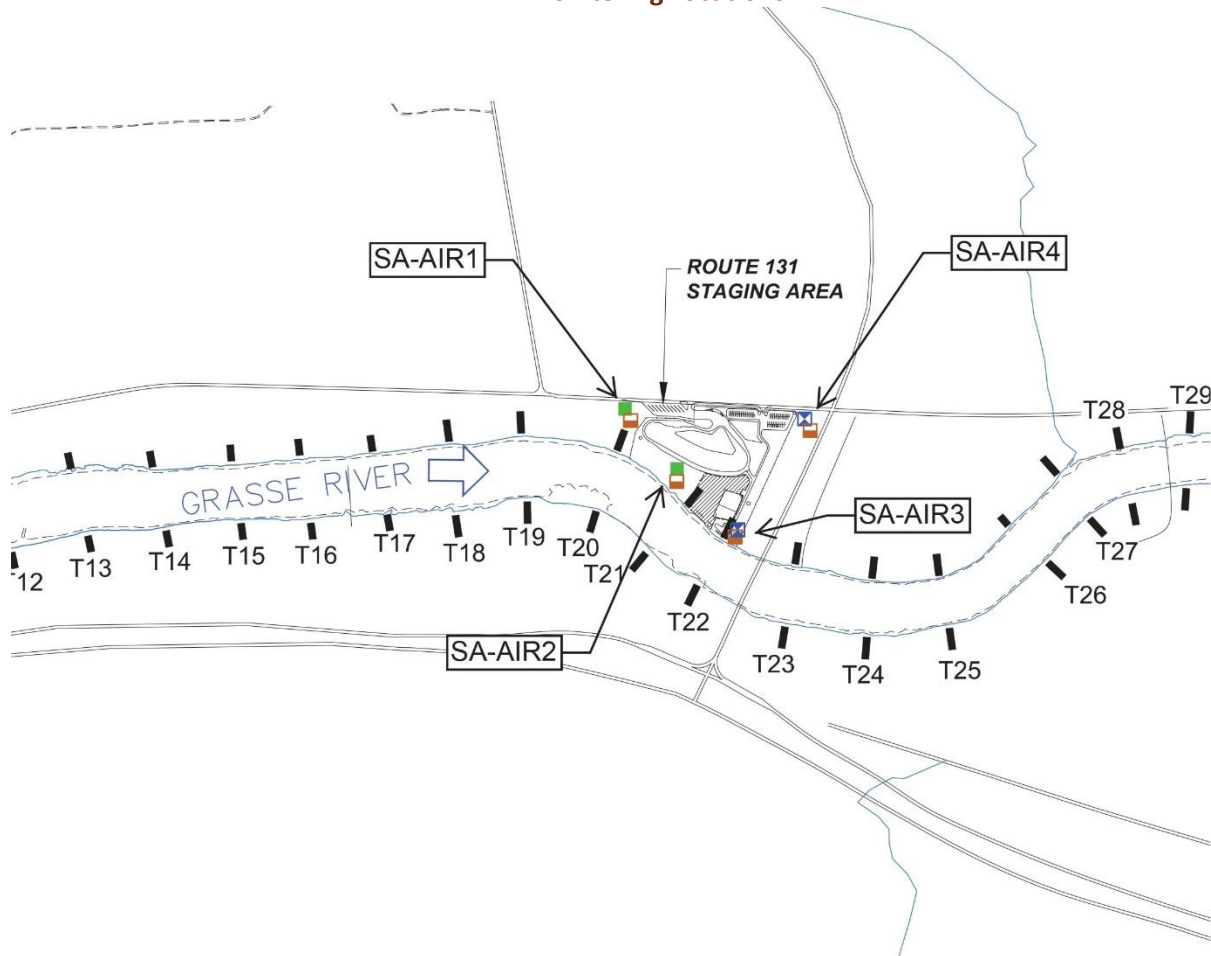
		Monitoring Station ID (see figure)					
Date	Action Level Check	SLF-AIR1	SLF-AIR2	SLF-AIR3	SLF-AIR4	SLF-AIR-PB	Notes
Jun 9	All Below	--	0.000530	--	0.000730	--	--
Jun 10	All Below	--	0.000560	--	0.000570	--	--
Jun 11	All Below	0.001100	--	0.000420	--	--	--
Jun 12	All Below	0.001200	--	0.000370	--	--	--
Jun 13	All Below	0.002300	--	0.001000	--	--	--
Jun 14	All Below	0.000450	--	0.001100	--	--	--
Jun 15	All Below	0.000360	--	0.000330	--	--	--
Jun 16	All Below	0.000660	0.001200	0.000660	0.000820	--	--
Jun 17	All Below	0.000440	0.001600	0.000740	0.000960	--	--
Jun 18	All Below	0.000620	0.000200	0.001100	0.000520	--	--
Jun 19	All Below	0.000720	0.001600	0.001700	0.001100	--	--
Jun 20	All Below	0.000710	0.001000	0.000640	0.000710	--	--
Jun 21	All Below	0.000700	0.001500	0.001000	0.001100	--	--
Jun 22	All Below	0.000560	0.000740	0.000630	0.000490	--	--
Jun 26	All Below	0.000570	0.000750	0.000440	0.000480	--	--
Jun 27	All Below	0.000690	0.000660	0.000530	0.000590	--	--
Jun 28	All Below	0.000530	0.000950	0.000820	0.001200	--	--
Jun 29	All Below	0.001300	0.000590	0.000660	0.000980	--	--

NA = Analysis not required
 Total PCBs (micrograms per cubic meter)

Air Monitoring - 2018 Route 131 Staging Area Construction

Program includes particulate monitoring using real-time meters for particulates (or dust) and volatile organic compounds (VOCs) and sampling for PCB analytical testing. Corrective action levels have been established based on levels that are safe for the community for particulates, VOCs, and PCBs. The actual monitoring results are compared to the corrective action levels to determine if adjustments in construction are needed. The air monitoring locations and tabulated results are provided below.

Air Monitoring Locations



2018 Air Particulate Data

Corrective Action Level = 0.150 milligram per cubic meter above upwind location

Date	Action Level Check	Monitoring Station ID (see figure)				Notes
		SA-AIR1	SA-AIR2	SA-AIR3	SA-AIR4	
May 22	All Below	0.035	0.0037	0.0182	0.04	--
May 23	All Below	0.0493	0.0163	0.0217	0.0412	--
May 24	All Below	0.0892	0.0329	0.0349	0.0493	--
May 25	All Below	0.049	0.0337	0.0399	0.045	--
May 30	All Below	262.08	0.024	0.0285	0.0286	SA-AIR1 level due to meter malfunction. Level not related to field activities.
May 31	All Below	0.0639	0.028	0.038	0.0369	--
Jun 1	All Below	0.0212	0.0201	0.0262	0.0218	--
Jun 2	All Below	0.019	0.018	0.0393	0.0337	--
Jun 5	All Below	0.0158	0.0189	0.0206	0.0178	--
Jun 6	All Below	0.0081	0.0102	0.0113	0.0079	--
Jun 7	All Below	0.0147	0.0014	0.0169	0.013	--
Jun 8	All Below	0.0171	0.0159	0.0197	0.0213	--
Jun 9	All Below	0.0183	0.0092	0.0091	0.0231	--
Jun 12	All Below	0.0197	0.0478	0.0191	0.028	--
Jun 13	All Below	0.0465	0.0263	0.0373	0.032	--
Jun 14	All Below	0.0237	0.0201	0.024	0.0264	--
Jun 15	All Below	0.0147	0.0135	0.0181	0.0104	--
Jun 16	All Below	0.0145	0.0171	0.0218	0.0239	--
Jun 19	All Below	0.0625	0.0597	0.0824	0.0722	--
Jun 20	All Below	0.0203	0.0161	0.0456	0.0175	--
Jun 21	All Below	0.0214	0.0203	0.0331	0.0283	--
Jun 22	All Below	0.018	0.0216	0.0326	0.0214	--
Jun 23	All Below	0.018	0.0188	0.0345	0.0281	--
Jun 26	All Below	0.0152	0.0145	0.0239	0.0996	--
Jun 27	All Below	0.0122	0.0158	0.0441	0.0167	--

		Monitoring Station ID (see figure)				
Date	Action Level Check	SA-AIR1	SA-AIR2	SA-AIR3	SA-AIR4	Notes
Jun 28	All Below	0.0197	0.0223	0.023	0.0145	--
Jun 29	All Below	0.0346	0.0343	0.04	0.0271	--
Jun 30	All Below	0.0284	0.0279	0.0377	0.0209	--

NA = Data not collected or recorded
 Particulates (milligrams per cubic meter)

2018 Air Volatile Organic Compound Data (Corrective Action Level = 25 ppm above upwind location)

		Monitoring Station ID (see figure)				
Date	Action Level Check	SA-AIR1	SA-AIR2	SA-AIR3	SA-AIR4	Notes
May 22	All Below	0	0	0	0	--
May 23	All Below	0	0	0	0	--
May 24	All Below	0	0	0	0	--
May 25	All Below	0	0.0097	0.0009	0.1112	--
May 30	All Below	0.254	0.2619	0.3308	0.6577	--
May 31	All Below	0.0981	0.0343	0.2043	0.1221	--
Jun 1	All Below	0.085	0.0668	0.137	0.0612	--
Jun 4	All Below	0.1029	0.1672	0.1957	0.1396	--
Jun 5	All Below	0.1002	0.2655	0.1021	0.5173	--
Jun 6	All Below	0.0006	0.0108	0.0409	0.4735	--
Jun 7	All Below	0.0255	0.0591	0.0383	0.0308	--
Jun 8	All Below	0.0374	0.0231	0.0017	0.002	--
Jun 9	All Below	0.0294	0.0211	0.0969	0	--
Jun 12	All Below	0.1046	0.2605	0.3355	0.6623	--
Jun 13	All Below	0.0762	0.0673	0.02629	0.65	--
Jun 14	All Below	0.0165	0.0429	0.1305	0.0876	--
Jun 15	All Below	0.026	0.0551	0.0443	0.0555	--
Jun 16	All Below	0.0211	0.0903	0.0963	0.0101	--
Jun 19	All Below	0.0857	0.3977	0.6634	1.2058	--

		Monitoring Station ID (see figure)				
Date	Action Level Check	SA-AIR1	SA-AIR2	SA-AIR3	SA-AIR4	Notes
Jun 20	All Below	0.0079	0.1933	0.0092	0.0324	--
Jun 21	All Below	0.0055	0.1609	0.0835	0.0335	--
Jun 22	All Below	0.0192	0.0238	0.0498	0.0742	--
Jun 23	All Below	0.0013	0.0296	0.1105	0	--
Jun 26	All Below	0.0198	0.6385	0.1986	0.7113	--
Jun 27	All Below	0.0114	0.4929	0.0996	0.0009	--
Jun 28	All Below	0.0035	0.0309	0.1919	0.0832	--
Jun 29	All Below	0.0001	0.1249	0.0901	0.1661	--
Jun 30	All Below	0.0096	0.121	0.1157	0.0705	--

NA = Data not collected or recorded
Volatile Organic Compounds (VOCs parts per million)

2018 Air PCB Data
Corrective Action Level = 0.100 microgram per cubic meter

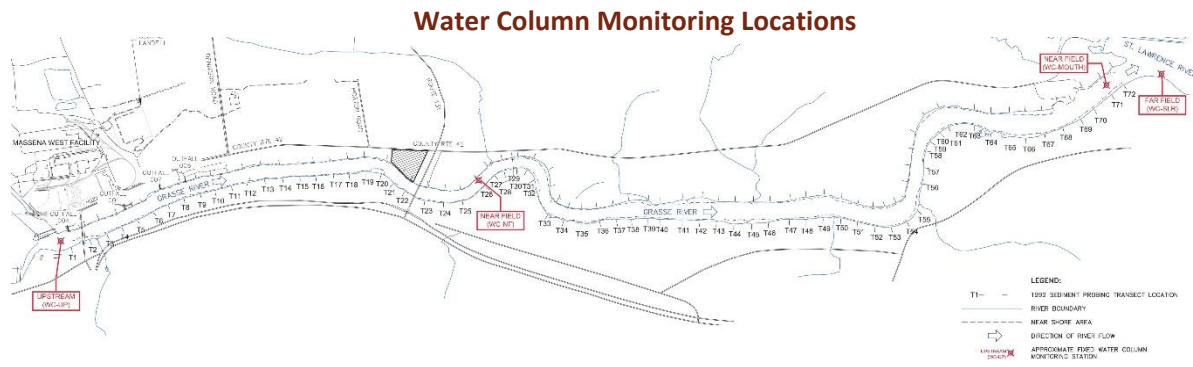
		Monitoring Station ID (see figure)				
Date	Action Level Check	SA-AIR1	SA-AIR2	SA-AIR3	SA-AIR4	Notes
May 22	All Below	Below detectable levels	Below detectable levels	0.000470	0.000330	--
May 23	All Below	Below detectable levels	0.001300	0.000400	0.000360	--
May 24	All Below	Below detectable levels	Below detectable levels	0.000370	0.000320	--
May 25	All Below	Below detectable levels	0.002200	0.000440	0.000440	--
May 30	All Below	Below detectable levels	Below detectable levels	0.000400	0.000540	--

		Monitoring Station ID (see figure)				
Date	Action Level Check	SA-AIR1	SA-AIR2	SA-AIR3	SA-AIR4	Notes
May 31	All Below	Below detectable levels	Below detectable levels	0.000980	0.000670	--
Jun 1	All Below	Below detectable levels	Below detectable levels	0.002900	0.000890	--
Jun 5	All Below	Below detectable levels	Below detectable levels	0.001300	0.000230	--
Jun 6	All Below	Below detectable levels	Below detectable levels	0.001600	0.000280	--
Jun 7	All Below	Below detectable levels	Below detectable levels	0.000620	0.000270	--
Jun 8	All Below	Below detectable levels	Below detectable levels	Below detectable levels	Below detectable levels	--
Jun 9	All Below	Below detectable levels	Below detectable levels	0.000610	0.000610	--
Jun 12	All Below	Below detectable levels	0.001300	0.000730	0.000500	--
Jun 13	All Below	0.001300	Below detectable levels	0.001000	0.000500	--
Jun 14	All Below	Below detectable levels	0.001900	0.001900	0.000540	--
Jun 15	All Below	Below detectable levels	Below detectable levels	0.000390	0.000240	--
Jun 28	All Below	Below detectable levels	0.003200	0.000790	0.000720	--

NA = Data not collected or recorded
 Total PCBs (micrograms per cubic meter)

Water Monitoring - 2018 Route 131 Staging Area Construction

Program includes turbidity monitoring using real-time meters for solids and PCB analytical testing at water column and water intake locations. Corrective action levels have been established based on levels that are safe for the community for both turbidity and PCBs. The actual monitoring results will be compared to the corrective action levels to determine if adjustments in construction are needed. The water locations and tabulated results are provided below.



2018 Water Column Turbidity Data (Corrective Action Level = 25 NTU above WC-UP Level)

Date	Action Level Check	Monitoring Station ID (see figure)							Notes
		WC-UP (0.5x)	WC-NF (0.2x)	WC-NF (0.8x)	WC-MOUT H (0.2x)	WC-MOUT H (0.8x)	WC-SLR (0.2x)	WC-SLR (0.8x)	
May 21	All Below	0.5	1.3	1.5	1.7	1.3	1.7	1.1	--
May 22	All Below	0.9	1.3	1.4	1.8	0.4	0.3	2.4	--
May 23	All Below	0.5	1.4	1.3	1.5	1.0	0.8	0.6	--
May 24	All Below	0.6	1.1	1.3	1.7	0.9	1.8	0.4	--
May 29	All Below	0.5	1.1	1.3	0.6	0.7	0.9	0.1	--

		Monitoring Station ID (see figure)							
Date	Action Level Check	WC-UP (0.5x)	WC-NF (0.2x)	WC-NF (0.8x)	WC-MOUT H (0.2x)	WC-MOUT H (0.8x)	WC-SLR (0.2x)	WC-SLR (0.8x)	Notes
May 30	All Below	0.5	1.0	2.0	2.2	1.3	2.1	1.0	--
May 31	All Below	0.4	1.2	1.4	1.9	1.0	0.8	0.4	--
Jun 1	All Below	0.2	0.8	0.8	1.5	0.7	0.4	0.0	--
Jun 4	All Below	1.5	3.4	2.5	4.9	2.4	2.7	0.7	--
Jun 5	All Below	1.1	1.7	2.0	1.5	1.8	2.2	1.1	--
Jun 6	All Below	1.7	2.3	2.0	0.9	0.9	0.4	0.1	--
Jun 7	All Below	2.5	1.9	2.0	1.4	0.6	1.1	0.8	--
Jun 8	All Below	0.6	1.0	2.1	1.5	0.6	1.0	0.0	--
Jun 11	All Below	0.8	1.1	1.8	2.1	2.0	1.6	0.7	--
Jun 12	All Below	0.3	1.5	2.0	1.9	0.9	0.1	0.3	--
Jun 13	All Below	0.9	2.4	2.4	2.0	1.1	2.3	0.5	--
Jun 14	All Below	0.1	2.0	2.1	1.9	0.6	0.7	0.2	--
Jun 15	All Below	0.3	1.8	1.8	2.2	1.3	1.7	0.9	--
Jun 18	All Below	0.5	0.5	2.7	0.8	0.1	0.0	0.3	--
Jun 19	All Below	11.2	29.8	15.2	7.2	7.2	0.9	1.1	--
Jun 20	All Below	1.2	7.6	11.6	11.0	1.7	1.5	1.0	--
Jun 21	All Below	0.8	2.4	8.9	6.5	1.6	1.7	0.9	--

		Monitoring Station ID (see figure)							
Date	Action Level Check	WC-UP (0.5x)	WC-NF (0.2x)	WC-NF (0.8x)	WC-MOUT H (0.2x)	WC-MOUT H (0.8x)	WC-SLR (0.2x)	WC-SLR (0.8x)	Notes
Jun 22	All Below	0.7	2.4	6.7	2.6	2.5	2.1	0.1	--
Jun 25	All Below	0.4	1.2	3.2	1.4	0.1	0.0	0.1	--
Jun 26	All Below	0.5	1.2	2.5	1.5	2.2	0.4	0.2	--
Jun 27	All Below	0.6	0.7	2.6	1.2	1.4	1.1	0.4	--
Jun 28	All Below	0.9	1.6	1.9	0.7	1.5	0.4	0.1	--
Jun 29	All Below	0.6	0.8	1.3	0.6	0.2	0.3	0.2	--

Turbidity (nephelometric turbidity unit; NTU)

2018 Water Column PCB Data
(Corrective Action Level = 0.5 microgram per liter)

		Monitoring Station ID (see figure)			
Date	Action Level Check	WC-NF	WC-MOUTH	WC-SLR	Notes
May 21	All Below	Below detectable levels	Below detectable levels	Below detectable levels	--
May 22	All Below	Below detectable levels	Below detectable levels	Below detectable levels	--
May 23	All Below	Below detectable levels	Below detectable levels	Below detectable levels	--
May 24	All Below	Below detectable levels	Below detectable levels	Below detectable levels	--

		Monitoring Station ID (see figure)			
Date	Action Level Check	WC-NF	WC-MOUTH	WC-SLR	Notes
May 29	All Below	Below detectable levels	Below detectable levels	Below detectable levels	--
May 30	All Below	Below detectable levels	Below detectable levels	Below detectable levels	--
May 31	All Below	Below detectable levels	Below detectable levels	Below detectable levels	--
Jun 1	All Below	Below detectable levels	Below detectable levels	Below detectable levels	--
Jun 4	All Below	Below detectable levels	Below detectable levels	Below detectable levels	--
Jun 5	All Below	Below detectable levels	Below detectable levels	Below detectable levels	--
Jun 6	All Below	Below detectable levels	Below detectable levels	Below detectable levels	--
Jun 7	All Below	Below detectable levels	Below detectable levels	Below detectable levels	--
Jun 8	All Below	Below detectable levels	Below detectable levels	Below detectable levels	--
Jun 11	All Below	Below detectable levels	Below detectable levels	Below detectable levels	--
Jun 12	All Below	0.017000	Below detectable levels	Below detectable levels	--
Jun 13	All Below	Below detectable levels	Below detectable levels	Below detectable levels	--
Jun 14	All Below	Below detectable levels	Below detectable levels	Below detectable levels	--

Total PCBs (micrograms per liter)

Water Intake Monitoring Locations



**2018 Water Intake Turbidity Data
(Corrective Action Level = 25 NTU above Baseline Level)**

		Monitoring Station ID (see figure)			
Date	Action Level Check	IN-AE-RAW	IN-SRMT-RAW	IN-SRMT-FIL	Notes
May 18	All Below	0.8	0.8	0.5	--
May 21	All Below	0.7	0.1	0.7	--
May 22	All Below	0.7	0.6	0.6	--
May 23	All Below	0.9	1.0	0.5	--
May 24	All Below	0.6	1.0	0.3	--
May 29	All Below	0.9	0.4	0.3	--
May 30	All Below	1.0	0.3	0.9	--
May 31	All Below	0.5	1.1	0.4	--
Jun 1	All Below	0.2	0.6	0.1	--
Jun 4	All Below	1.8	0.7	1.4	--
Jun 5	All Below	1.0	0.7	0.3	--
Jun 6	All Below	0.6	0.9	0.7	--
Jun 7	All Below	1.3	0.7	0.5	--
Jun 8	All Below	0.5	1.1	0.8	--
Jun 11	All Below	1.2	0.9	0.7	--
Jun 12	All Below	0.9	1.1	0.7	--
Jun 13	All Below	0.8	1.5	0.6	--
Jun 14	All Below	0.8	1.8	1.0	--

		Monitoring Station ID (see figure)			
Date	Action Level Check	IN-AE-RAW	IN-SRMT-RAW	IN-SRMT-FIL	Notes
Jun 15	All Below	2.4	1.0	0.5	--
Jun 18	All Below	0.9	1.0	0.7	--
Jun 19	All Below	1.1	1.0	0.4	--
Jun 20	All Below	1.3	1.9	0.6	--
Jun 21	All Below	1.0	1.5	0.5	--
Jun 22	All Below	1.1	1.4	0.5	--
Jun 25	All Below	1.5	1.1	0.6	--
Jun 26	All Below	0.8	1.3	0.5	--
Jun 27	All Below	0.7	1.3	0.8	--
Jun 28	All Below	0.5	1.3	0.4	--
Jun 29	All Below	0.5	0.8	0.3	--

NA = Data not collected or recorded
Turbidity (nephelometric turbidity unit; NTU)

2018 Water Intake PCB Data
(Corrective Action Level = 0.5 microgram per liter)

		Monitoring Station ID (see figure)			
Date	Action Level Check	IN-AE-RAW	IN-SRMT-RAW	IN-SRMT-FIL	Notes
May 21	All Below	Below detectable levels	Below detectable levels	Below detectable levels	--
May 22	All Below	Below detectable levels	Below detectable levels	Below detectable levels	--
May 23	All Below	Below detectable levels	Below detectable levels	Below detectable levels	--
May 24	All Below	Below detectable levels	Below detectable levels	Below detectable levels	--

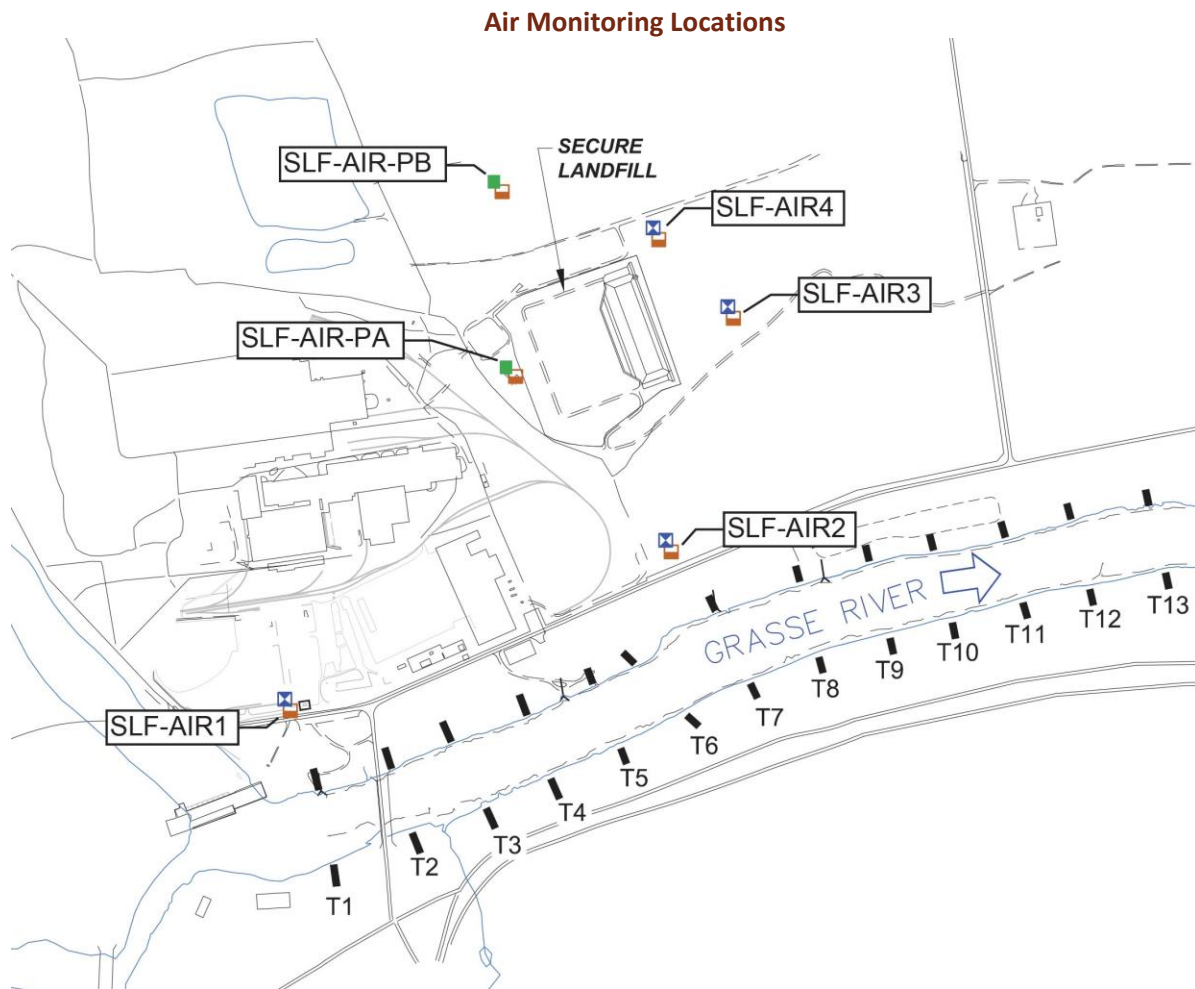
		Monitoring Station ID (see figure)			
Date	Action Level Check	IN-AE-RAW	IN-SRMT-RAW	IN-SRMT-FIL	Notes
May 29	All Below	Below detectable levels	Below detectable levels	Below detectable levels	--
May 30	All Below	Below detectable levels	Below detectable levels	Below detectable levels	--
May 31	All Below	Below detectable levels	Below detectable levels	Below detectable levels	--
Jun 1	All Below	Below detectable levels	Below detectable levels	Below detectable levels	--
Jun 4	All Below	Below detectable levels	Below detectable levels	Below detectable levels	--
Jun 5	All Below	Below detectable levels	Below detectable levels	Below detectable levels	--
Jun 6	All Below	Below detectable levels	Below detectable levels	Below detectable levels	--
Jun 7	All Below	Below detectable levels	Below detectable levels	Below detectable levels	--
Jun 11	All Below	Below detectable levels	Below detectable levels	Below detectable levels	--
Jun 12	All Below	Below detectable levels	Below detectable levels	Below detectable levels	--
Jun 13	All Below	Below detectable levels	Below detectable levels	Below detectable levels	--
Jun 14	All Below	Below detectable levels	Below detectable levels	Below detectable levels	--

Total PCBs (micrograms per liter)

July 2018

Air Monitoring - 2018 Secure Landfill Construction and Operation

Program includes particulate monitoring using real-time meters for particulates (or dust) and volatile organic compounds (VOCs) and sampling for PCB analytical testing. Corrective action levels have been established based on levels that are safe for the community for particulates, VOCs, and PCBs. The actual monitoring results are compared to the corrective action levels to determine if adjustments in construction are needed. The air monitoring locations and tabulated results are provided below.



2018 Air Particulate Data

(Corrective Action Level = 0.150 milligram per cubic meter above upwind location)

		Monitoring Station ID (see figure)						
Date	Action Level Check	SLF-AIR1	SLF-AIR2	SLF-AIR3	SLF-AIR4	SLF-AIR-PA	SLF-AIR-PB	Notes
Jul 1	All Below	0.043	0.0423	0.0455	0.0329	NA	NA	--
Jul 2	All Below	0.0663	0.0621	0.0893	0.0383	NA	NA	--
Jul 3	All Below	0.0506	0.045	0.0474	0.0372	NA	NA	--
Jul 4	All Below	0.0319	0.0204	0.049	0.0176	NA	NA	--
Jul 5	All Below	0.0363	0.0245	0.0556	0.0475	NA	NA	--
Jul 6	All Below	0.0306	0.0275	0.0297	0.0253	NA	NA	--
Jul 7	All Below	0.0122	0.0086	0.0108	0.0077	NA	NA	--

NA = Data not collected

Particulates (milligrams per cubic meter)

2018 Air Volatile Organic Compound Data

(Corrective Action Level = 25 ppm above upwind location)

		Monitoring Station ID (see figure)						
Date	Action Level Check	SLF-AIR1	SLF-AIR2	SLF-AIR3	SLF-AIR4	SLF-AIR-PA	SLF-AIR-PB	Notes
Jul 1	All Below	0.0269	0.0423	0.0482	0.0256	NA	NA	--
Jul 2	All Below	0.196	0.073	0.1909	0.0678	NA	NA	--
Jul 3	All Below	0.0721	0.0654	0.1066	0.0855	NA	NA	--
Jul 4	All Below	0.1252	0.0325	0.0963	0.0743	NA	NA	--
Jul 5	All Below	0.1207	0.1317	0.1333	0.0792	NA	NA	--
Jul 6	All Below	0.1538	0.0956	0.061	0.0611	NA	NA	--
Jul 7	All Below	0.3673	0.0373	0.0528	0.0679	NA	NA	--

NA = Data not collected

Volatile Organic Compounds (VOCs parts per million)

2018 Air PCB Data

Corrective Action Level = 0.100 microgram per cubic meter

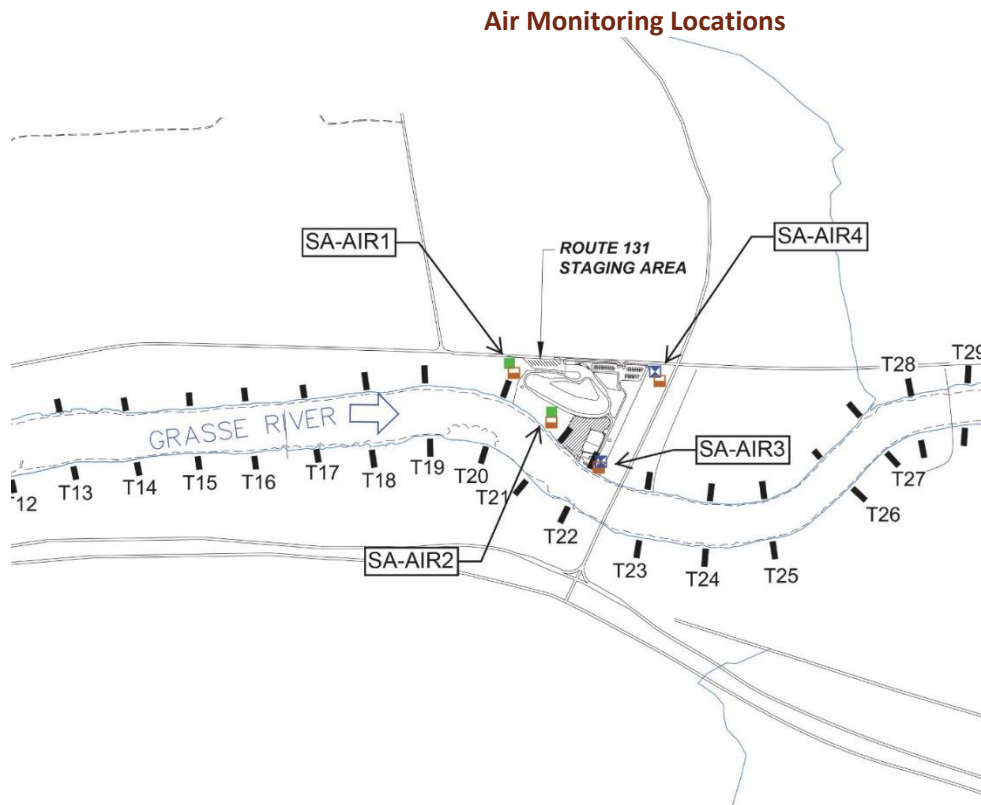
Date	Action Level Check	Monitoring Station ID (see figure)					Notes
		SLF-AIR1	SLF-AIR2	SLF-AIR3	SLF-AIR4	SLF-AIR-PB	
July 2018	NA	NA	NA	NA	NA	NA	--

NA = Analysis not required

Total PCBs (micrograms per cubic meter)

Air Monitoring - 2018 Route 131 Staging Area Construction

Program includes particulate monitoring using real-time meters for particulates (or dust) and volatile organic compounds (VOCs) and sampling for PCB analytical testing. Corrective action levels have been established based on levels that are safe for the community for particulates, VOCs, and PCBs. The actual monitoring results are compared to the corrective action levels to determine if adjustments in construction are needed. The air monitoring locations and tabulated results are provided below.



2018 Air Particulate Data

Corrective Action Level = 0.150 milligram per cubic meter above upwind location

Date	Action Level Check	Monitoring Station ID (see figure)				Notes
		SA-AIR1	SA-AIR2	SA-AIR3	SA-AIR4	
Jul 3	All Below	0.0742	0.054	0.0757	0.1513	--
Jul 4	All Below	0.0369	0.1134	0.0363	0.0261	--
Jul 6	All Below	0.0411	0.0415	0.0508	0.0281	--
Jul 7	All Below	0.0145	0.0139	0.0146	0.012	--
Jul 10	All Below	0.0143	0.0167	0.023	0.0136	--
Jul 11	All Below	0.0557	0.0415	0.0464	0.0357	--
Jul 12	All Below	0.0279	0.0302	0.0265	0.0195	--
Jul 13	All Below	0.0263	0.0365	0.0247	0.015	--
Jul 14	All Below	0.0517	0.0389	0.0361	0.0193	--
Jul 17	All Below	0.0515	0.0383	0.0444	0.0355	--
Jul 18	All Below	0.032	0.0299	0.027	0.0168	--
Jul 19	All Below	0.0074	0.0066	0.008	0.0061	--
Jul 20	All Below	0.0153	0.0123	0.01	0.0085	--
Jul 21	All Below	0.01	0.0089	0.0097	0.0065	--
Jul 24	All Below	0.0176	0.0283	0.0104	0.0121	--
Jul 25	All Below	0.0122	0.0125	0.0084	0.0091	--
Jul 26	All Below	0.0577	0.0539	0.0613	0.0485	--
Jul 27	All Below	0.0571	0.0542	0.0609	0.0451	--
Jul 28	All Below	0.0171	0.0151	0.0267	0.0131	--
Jul 31	All Below	0.0305	0.0319	0.0329	0.0277	--

NA = Data not collected or recorded

Particulates (milligrams per cubic meter)

2018 Air Volatile Organic Compound Data
(Corrective Action Level = 25 ppm above upwind location)

Date	Action Level Check	Monitoring Station ID (see figure)				Notes
		SA-AIR1	SA-AIR2	SA-AIR3	SA-AIR4	
Jul 3	All Below	0.0787	0.7001	0.5701	1.2684	--
Jul 4	All Below	0.0336	0.1621	0.1619	0.1787	--
Jul 6	All Below	0.0311	0.152	0.237	0.1733	--
Jul 7	All Below	0.0099	0.0705	0.0064	0.0193	--
Jul 10	All Below	0.0319	0.5339	0.3132	0.7595	--
Jul 11	All Below	0.0329	0.564	0.1297	0.8149	--
Jul 12	All Below	0.0042	0.1	0.0379	0.0208	--
Jul 13	All Below	0.0012	0.0061	0.1007	0.0731	--
Jul 14	All Below	0.0116	0.0589	0.1861	0.0609	--
Jul 17	All Below	0.0432	0.568	0.4579	1.0982	--
Jul 18	All Below	0.0218	0.0999	0.1817	0.2725	--
Jul 19	All Below	0.0077	0.0188	0.0035	0.0057	--
Jul 20	All Below	0.002	0.0764	0.1053	0.005	--
Jul 21	All Below	0.0017	0	0.1813	0.0238	--
Jul 24	All Below	0.0797	0.8055	0.3473	1.1773	--
Jul 25	All Below	0.055	0.7761	0.066	1.1491	--
Jul 26	All Below	0.0061	0.0981	0.0836	0.1666	--
Jul 27	All Below	0.0157	0.2167	0.1349	0.2275	--
Jul 28	All Below	0.0357	0.7407	0.2269	1.0221	--
Jul 31	All Below	0.055	0.7761	0.066	1.1491	--

NA = Data not collected or recorded

Volatile Organic Compounds (VOCs parts per million)

2018 Air PCB Data

Corrective Action Level = 0.100 micrograms per cubic meter

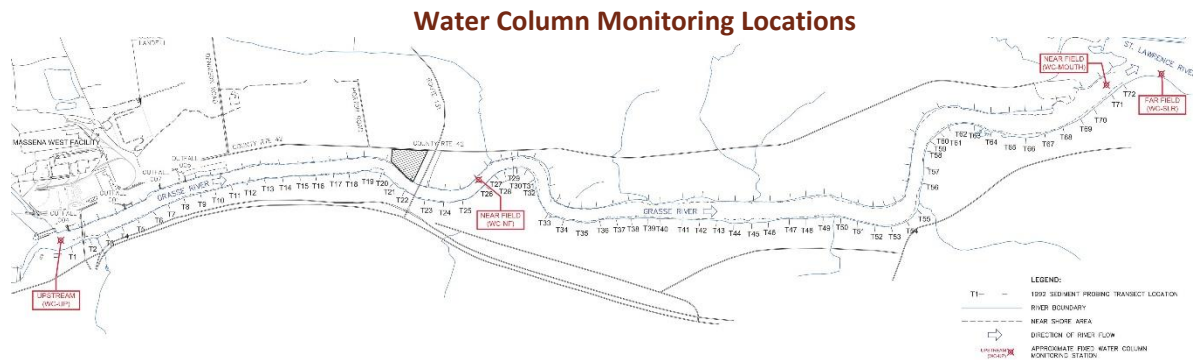
		Monitoring Station ID (see figure)				
Date	Action Level Check	SA-AIR1	SA-AIR2	SA-AIR3	SA-AIR4	Notes
July 2018	NA	NA	NA	NA	NA	--

NA = Data not collected or recorded

Total PCBs (micrograms per cubic meter)

Water Monitoring - 2018 Route 131 Staging Area Construction

Program includes turbidity monitoring using real-time meters for solids and PCB analytical testing at water column and water intake locations. Corrective action levels have been established based on levels that are safe for the community for both turbidity and PCBs. The actual monitoring results will be compared to the corrective action levels to determine if adjustments in construction are needed. The water locations and tabulated results are provided below.



2018 Water Column Turbidity Data
(Corrective Action Level = 25 NTU above WC-UP Level)

Date	Action Level Check	Monitoring Station ID (see figure)							Notes
		WC-UP (0.5x)	WC-NF (0.2x)	WC-NF (0.8x)	WC-MOUTH (0.2x)	WC-MOUTH (0.8x)	WC-SLR (0.2x)	WC-SLR (0.8x)	
Jul 2	All Below	0.1	0.2	1.9	1.2	0.7	0.2	0.4	--
Jul 3	All Below	0.1	0.8	1.4	0.8	0.0	0.0	0.4	--
Jul 5	All Below	0.1	0.2	1.2	0.2	1.0	0.6	0.7	--
Jul 6	All Below	0.1	0.5	0.8	0.8	0.1	0.1	0.1	--
Jul 9	All Below	0.3	1.1	1.0	1.9	1.0	0.3	0.0	--
Jul 10	All Below	0.5	0.3	1.1	0.9	0.7	1.4	0.4	--
Jul 11	All Below	0.4	0.0	0.7	1.3	1.7	0.8	0.6	--
Jul 12	All Below	0.5	0.1	0.3	0.4	1.0	0.0	0.0	--
Jul 13	All Below	0.3	0.7	1.2	0.0	0.6	0.1	0.0	--
Jul 16	All Below	0.7	0.4	0.1	0.5	0.2	0.5	0.7	--
Jul 17	All Below	0.3	0.2	0.1	0.1	1.0	0.5	0.5	--
Jul 18	All Below	0.6	0.6	0.3	0.7	1.4	0.2	0.3	--
Jul 24	All Below	0.7	0.4	0.0	0.9	0.1	0.1	0.5	--
Jul 25	All Below	0.2	0.0	0.0	0.8	0.6	0.2	0.4	--
Jul 26	All Below	0.2	0.4	0.3	0.4	0.7	0.7	0.4	--
Jul 27	All Below	0.4	0.1	0.3	0.8	0.1	0.3	0.4	--
Jul 30	All Below	0.5	0.1	0.2	0.0	0.1	0.0	0.0	--

		Monitoring Station ID (see figure)							
Date	Action Level Check	WC-UP (0.5x)	WC-NF (0.2x)	WC-NF (0.8x)	WC-MOUTH (0.2x)	WC-MOUTH (0.8x)	WC-SLR (0.2x)	WC-SLR (0.8x)	Notes
Jul 31	All Below	0.7	0.7	0.1	0.6	0.3	0.1	0.1	--

Turbidity (nephelometric turbidity unit; NTU)

2018 Water Column PCB Data
(Corrective Action Level = 0.5 microgram per liter)

		Monitoring Station ID (see figure)			
Date	Action Level Check	WC-NF	WC-MOUTH	WC-SLR	Notes
July 2018	NA	NA	NA	NA	--

Total PCBs (micrograms per liter)

Water Intake Monitoring Locations



2018 Water Intake Turbidity Data
(Corrective Action Level = 25 NTU above Baseline Level)

		Monitoring Station ID (see figure)			
Date	Action Level Check	IN-AE-RAW	IN-SRMT-RAW	IN-SRMT-FIL	Notes
Jul 2	All Below	1.0	0.7	0.1	--
Jul 3	All Below	0.4	0.9	0.6	--
Jul 5	All Below	2.0	0.8	0.2	--
Jul 6	All Below	0.3	1.2	0.3	--
Jul 9	All Below	1.1	0.6	0.0	--
Jul 10	All Below	0.3	0.9	0.2	--
Jul 11	All Below	0.2	1.0	0.1	--
Jul 12	All Below	1.1	0.9	0.4	--
Jul 13	All Below	0.4	0.6	0.4	--
Jul 16	All Below	0.1	0.5	0.2	--
Jul 17	All Below	0.5	1.0	0.2	--
Jul 18	All Below	0.2	2.8	0.0	--
Jul 24	All Below	0.4	1.4	0.7	--
Jul 25	All Below	0.2	0.5	0.3	--
Jul 26	All Below	0.2	1.2	0.8	--
Jul 27	All Below	0.5	0.7	0.3	--
Jul 30	All Below	1.4	0.9	0.1	--
Jul 31	All Below	0.4	1.1	0.5	--

NA = Data not collected or recorded
Turbidity (nephelometric turbidity unit; NTU)

2018 Water Intake PCB Data
(Corrective Action Level = 0.5 microgram per liter)

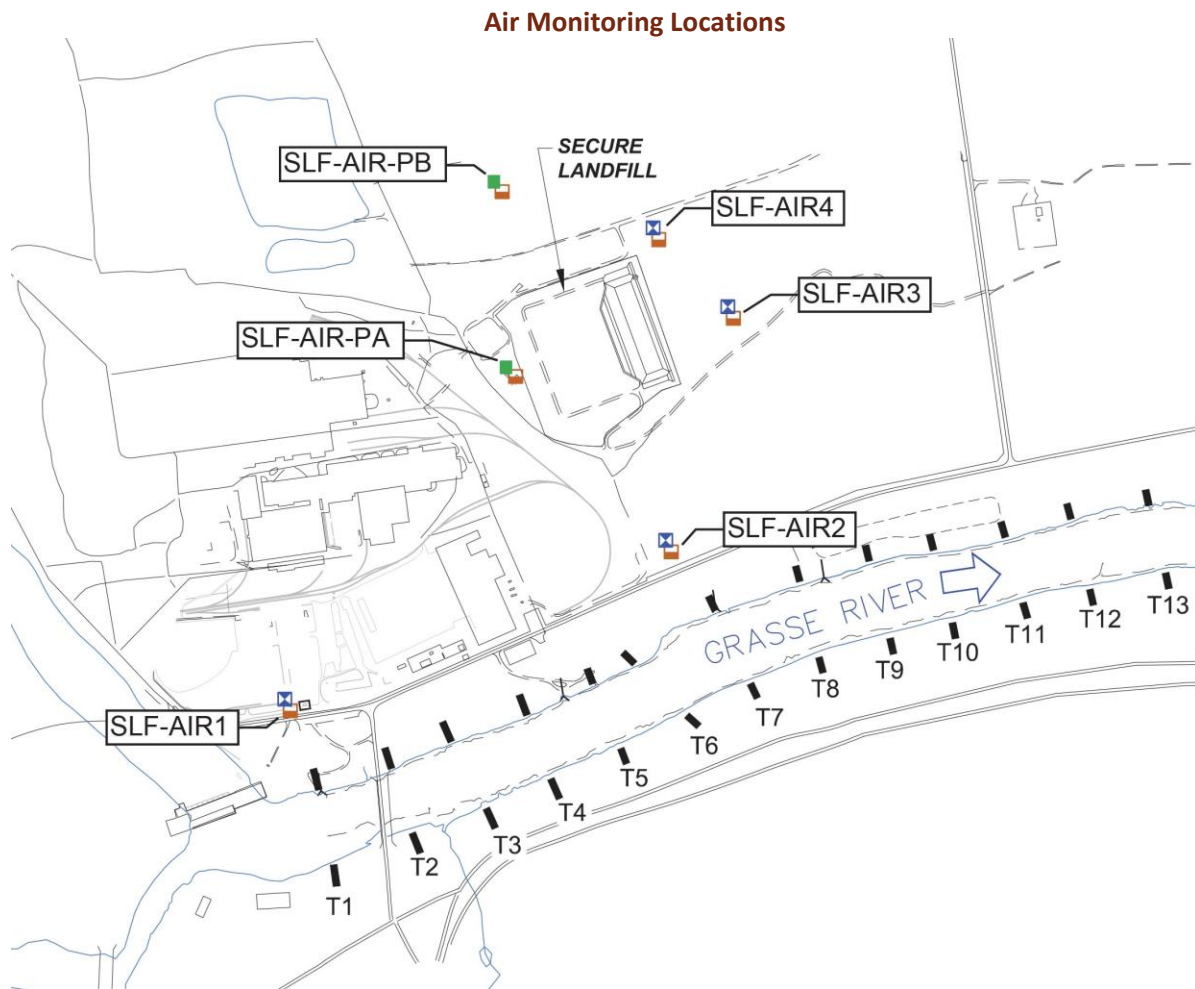
		Monitoring Station ID (see figure)			
Date	Action Level Check	IN-AE-RAW	IN-SRMT-RAW	IN-SRMT-FIL	Notes
July 2018	NA	NA	NA	NA	--

Total PCBs (micrograms per liter)

August 2018

Air Monitoring - 2018 Secure Landfill Construction and Operation

Program includes particulate monitoring using real-time meters for particulates (or dust) and volatile organic compounds (VOCs) and sampling for PCB analytical testing. Corrective action levels have been established based on levels that are safe for the community for particulates, VOCs, and PCBs. The actual monitoring results are compared to the corrective action levels to determine if adjustments in construction are needed. The air monitoring locations and tabulated results are provided below.



2018 Air Particulate Data

(Corrective Action Level = 0.150 milligram per cubic meter above upwind location)

		Monitoring Station ID (see figure)						
Date	Action Level Check	SLF-AIR1	SLF-AIR2	SLF-AIR3	SLF-AIR4	SLF-AIR-PA	SLF-AIR-PB	Notes
Aug 15	All Below	0.1159	0.0245	0.0274	0.0195	0.0386	0.0665	--
Aug 16	All Below	0.0457	0.0419	0.0443	0.0411	0.0483	0.073	--
Aug 17	All Below	0.0238	0.0195	0.0231	0.012	0.0121	0.022	--
Aug 18	All Below	0.0319	0.0338	0.0311	0.0260	NA	NA	--
Aug 19	All Below	0.0217	0.0168	0.0735	0.0133	NA	NA	--
Aug 20	All Below	0.0443	0.1233	0.0317	0.0226	NA	NA	--
Aug 21	All Below	0.0167	0.0202	0.0243	0.014	0.0211	0.0239	--
Aug 22	All Below	0.0177	0.0207	0.0182	0.014	0.0165	0.0309	--
Aug 23	All Below	0.021	0.0181	0.0229	0.017	--	--	--
Aug 24	All Below	0.0244	0.021	0.0261	0.02	0.0226	0.0335	--
Aug 25	All Below	0.0366	0.0328	0.0406	0.0306	0.0376	0.05533 5	--
Aug 26	All Below	0.0365	0.0298	0.0368	0.0276	--	--	--
Aug 27	All Below	0.0436	0.1427	0.0527	0.0275	--	--	--
Aug 28	All Below	0.0477	0.0452	0.047	0.0397	--	--	--
Aug 29	All Below	0.0583	0.0488	0.0599	0.038	--	--	--
Aug 30	All Below	0.0426	0.0375	0.0424	0.0298	--	--	--

		Monitoring Station ID (see figure)						
Date	Action Level Check	SLF-AIR1	SLF-AIR2	SLF-AIR3	SLF-AIR4	SLF-AIR-PA	SLF-AIR-PB	Notes
Aug 31	All Below	0.0227	0.0115	0.0771	0.0009	0.013	0.0189	--

NA = Data not collected

Particulates (milligrams per cubic meter)

2018 Air Volatile Organic Compound Data (Corrective Action Level = 25 ppm above upwind location)

		Monitoring Station ID (see figure)						
Date	Action Level Check	SLF-AIR1	SLF-AIR2	SLF-AIR3	SLF-AIR4	SLF-AIR-PA	SLF-AIR-PB	Notes
Aug 15	All Below	0.3732	0.0049	0.0004	0.109	85.357	0.4912	SLF-AIR-PA levels not related to field activities.
Aug 16	All Below	0.2278	0.003	0.0219	0.1043	0.123	0.8671	--
Aug 17	All Below	0.0025	0.0029	0.0506	0.0744	0.1163	0.652	--
Aug 18	All Below	0	0.0001	0.0130	0.0471	NA	NA	--
Aug 19	All Below	0.1994	0.0034	0.0468	0.0819	NA	NA	--
Aug 20	All Below	0.2770	0.0846	0.1483	1.3230	NA	NA	--
Aug 21	All Below	0.0121	0.0743	0.1448	0.1552	0.9887	0.5629	--
Aug 22	All Below	0.0113	0.004	0	0.0227	0.0339	0.3288	--
Aug 23	All Below	0.8111	0.0451	0.0311	0.0728	--	--	--
Aug 24	All Below	0.0057	0.0203	0.0271	0.0681	3.2305	0.4821	--

		Monitoring Station ID (see figure)						
Date	Action Level Check	SLF-AIR1	SLF-AIR2	SLF-AIR3	SLF-AIR4	SLF-AIR-PA	SLF-AIR-PB	Notes
Aug 25	All Below	0.1627	0.0243	0.0833	0.0439	0.4765	0.3797	--
Aug 26	All Below	0.1752	0.046	0.0842	0.0303	--	--	--
Aug 27	All Below	0.229	0.0464	0.0918	0.0522	--	--	--
Aug 28	All Below	0.0733	0.0077	0.0816	0.0373	--	--	--
Aug 29	All Below	0.0389	0.0155	0.0713	0.0693	--	--	--
Aug 30	All Below	0.3333	0.0057	0.0493	0.0696	--	--	--
Aug 31	All Below	0.3943	0.0299	0.1052	0.0651	0.0257	0.3787	--

NA = Data not collected

Volatile Organic Compounds (VOCs parts per million)

2018 Air PCB Data

Corrective Action Level = 0.100 microgram per cubic meter

		Monitoring Station ID (see figure)						
Date	Action Level Check	SLF-AIR1	SLF-AIR2	SLF-AIR3	SLF-AIR4	SLF-AIR-PA	SLF-AIR-PB	Notes
Aug 15	All Below	0.001100	0.001700	0.001300	0.000450	Below Detectable Levels	Below Detectable Levels	--
Aug 17	All Below	0.001300	0.002100	0.002700	0.001400	--	--	--
Aug 18	All Below	0.001200	0.001700	0.001700	0.001200	--	--	--
Aug 19	All Below	0.001300	0.001200	0.001800	0.001300	--	--	--

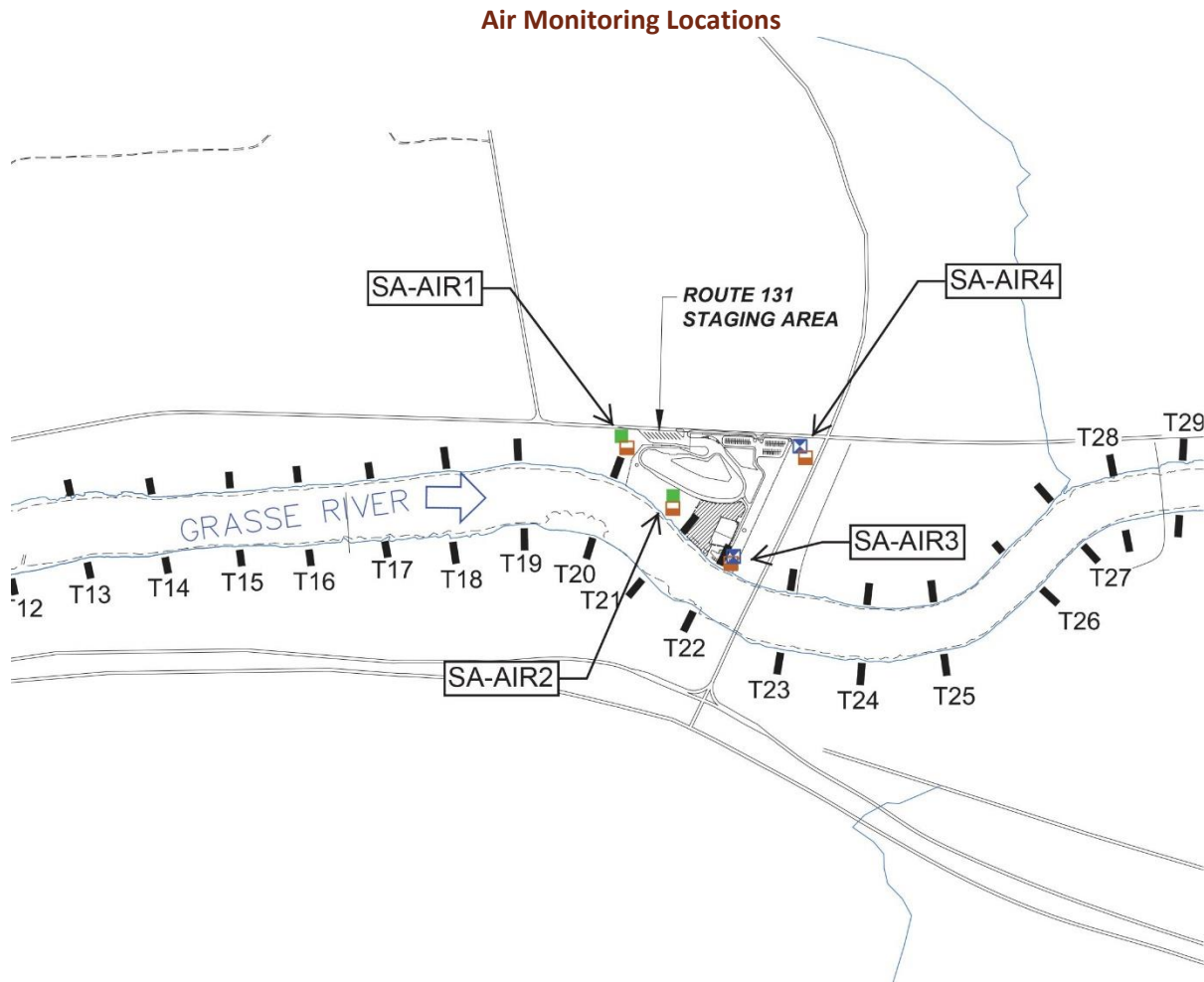
		Monitoring Station ID (see figure)						
Date	Action Level Check	SLF-AIR1	SLF-AIR2	SLF-AIR3	SLF-AIR4	SLF-AIR-PA	SLF-AIR-PB	Notes
Aug 20	All Below	0.001200	0.001900	0.001300	0.002300	--	--	--
Aug 21	All Below	0.001000	0.000840	0.002100	0.002200	Below Detectable Levels	Below Detectable Levels	--
Aug 23	All Below	0.001400	0.001300	0.001300	0.001100	--	--	--
Aug 24	All Below	0.001000	0.001800	0.001500	0.002400	--	--	--
Aug 25	All Below	0.001200	0.001500	0.002100	0.001900	--	--	--
Aug 26	All Below	0.001200	0.002100	0.002300	0.001800	--	--	--
Aug 27	All Below	0.001200	--	0.002000	0.001700	--	--	--
Aug 29	All Below	0.001300	0.003100	0.002100	0.002100	--	--	--
Aug 30	All Below	0.001200	0.002100	0.001500	0.001600	--	--	--
Aug 31	All Below	0.001000	0.000760	0.001000	0.000590	--	--	--

NA = Analysis not required

Total PCBs (micrograms per cubic meter)

Air Monitoring - 2018 Route 131 Staging Area Construction

Program includes particulate monitoring using real-time meters for particulates (or dust) and volatile organic compounds (VOCs) and sampling for PCB analytical testing. Corrective action levels have been established based on levels that are safe for the community for particulates, VOCs, and PCBs. The actual monitoring results are compared to the corrective action levels to determine if adjustments in construction are needed. The air monitoring locations and tabulated results are provided below.



2018 Air Particulate Data

Corrective Action Level = 0.150 milligram per cubic meter above upwind location

Date	Action Level Check	Monitoring Station ID (see figure)				Notes
		SA-AIR1	SA-AIR2	SA-AIR3	SA-AIR4	
Aug 1	All Below	0.0321	0.0331	0.0461	0.0202	--
Aug 2	All Below	0.0474	0.0259	0.0296	0.0216	--
Aug 3	All Below	0.0725	0.0602	0.0756	0.0501	--
Aug 4	All Below	0.0411	0.0284	0.0327	0.0243	--
Aug 7	All Below	0.1394	0.1027	0.0689	0.0707	--
Aug 8	All Below	0.0352	0.0289	0.0367	0.0227	--
Aug 9	All Below	0.0492	0.0481	0.048	0.0305	--
Aug 10	All Below	0.0385	0.0311	0.0363	0.0253	--
Aug 11	All Below	0.0073	0.0085	0.0086	0.0073	--
Aug 14	All Below	0.0326	0.0488	0.0266	0.0161	--
Aug 15	All Below	0.0375	0.0406	0.0365	0.0259	--
Aug 16	All Below	0.0652	0.0625	0.0703	0.0421	--
Aug 17	All Below	0.0299	0.0909	0.0306	0.0292	--
Aug 18	All Below	0.0519	0.0679	0.0431	0.0332	--
Aug 21	All Below	0.0304	0.0323	0.0504	0.038	--
Aug 22	All Below	0.0272	0.0368	0.0223	0.0309	--
Aug 23	All Below	0.0291	0.026	0.0265	0.0214	--
Aug 24	All Below	0.0385	0.0374	0.0643	0.0293	--
Aug 25	All Below	0.0819	0.137	0.0631	0.0806	--
Aug 26	All Below	0.0491	0.0465	0.0453	0.038	--
Aug 27	All Below	0.0283	0.0279	0.0272	0.0227	--
Aug 28	All Below	0.0647	0.0645	0.0717	0.061	--
Aug 29	All Below	0.0665	0.0715	0.0643	0.0558	--
Aug 30	All Below	0.0537	0.0573	0.0515	0.0443	--
Aug 31	All Below	0.0212	0.0198	0.0249	0.0174	--

NA = Data not collected or recorded

Particulates (milligrams per cubic meter)

2018 Air Volatile Organic Compound Data
(Corrective Action Level = 25 ppm above upwind location)

Date	Action Level Check	Monitoring Station ID (see figure)				Notes
		SA-AIR1	SA-AIR2	SA-AIR3	SA-AIR4	
Aug 1	All Below	0.0108	0.1499	0.1201	0.2357	--
Aug 2	All Below	0.0273	0.0045	0.0423	0.2323	--
Aug 3	All Below	0.0099	0.1422	0.0747	0.2779	--
Aug 4	All Below	0.0091	0.068	0.1601	0.2954	--
Aug 7	All Below	0.034	0.9133	0.3425	2.3379	--
Aug 8	All Below	0.0125	0.9145	0.1169	2.3439	--
Aug 9	All Below	0.0037	1.0903	0.0425	0.5283	--
Aug 10	All Below	0.0127	1.4759	0.0647	0.6051	--
Aug 11	All Below	0.0125	1.1892	0.0105	0.6051	--
Aug 14	All Below	0.0215	4.8304	0.555	4.4869	--
Aug 15	All Below	0.0152	6.9205	0.1245	4.2841	--
Aug 16	All Below	0.0196	5.6501	0.151	1.8961	--
Aug 17	All Below	0.0177	5.6268	0.0085	4.7395	--
Aug 18	All Below	0.0041	0.2083	0.0671	4.3628	--
Aug 21	All Below	0.0373	0.0089	0.3455	3.8937	--
Aug 22	All Below	0.0022	0.0507	0.0505	5.1105	--
Aug 23	All Below	0.0312	0.8884	0.0872	4.3459	--
Aug 24	All Below	0.0311	1.6362	0.061	6.2632	--
Aug 25	All Below	0.0074	0.0693	0.0488	0.2007	--
Aug 26	All Below	0.0105	0.0945	0.0338	0.0408	--
Aug 27	All Below	0	0.0085	0	0	--
Aug 28	All Below	0.0985	0	0.6097	0.0251	--
Aug 29	All Below	0.0751	0.1262	0.597	0.0303	--
Aug 30	All Below	0.0041	0.1407	0.0943	0.0221	--
Aug 31	All Below	0.0643	0.1219	0.0003	0.1009	--

NA = Data not collected or recorded
 Volatile Organic Compounds (VOCs parts per million)

2018 Air PCB Data

Corrective Action Level = 0.100 microgram per cubic meter

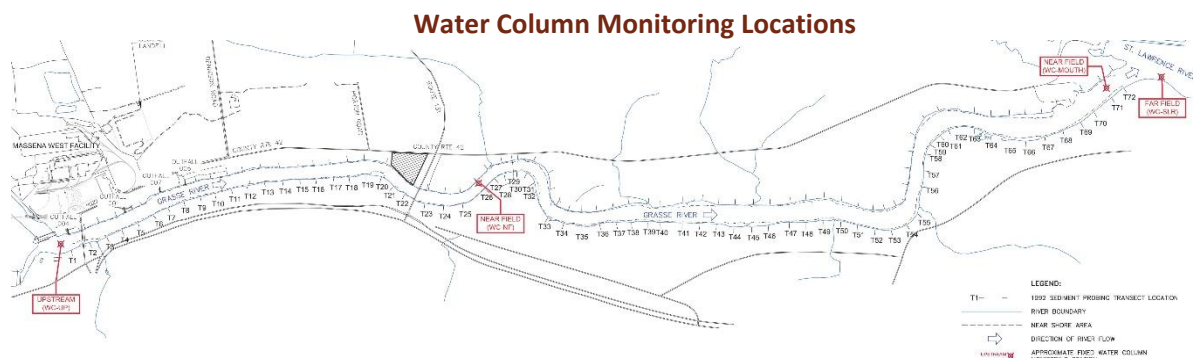
		Monitoring Station ID (see figure)				
Date	Action Level Check	SA-AIR1	SA-AIR2	SA-AIR3	SA-AIR4	Notes
Monitoring activities not conducted at this location in August 2018.						

NA = Data not collected or recorded

Total PCBs (micrograms per cubic meter)

Water Monitoring - 2018 Route 131 Staging Area Construction

Program includes turbidity monitoring using real-time meters for solids and PCB analytical testing at water column and water intake locations. Corrective action levels have been established based on levels that are safe for the community for both turbidity and PCBs. The actual monitoring results will be compared to the corrective action levels to determine if adjustments in construction are needed. The water locations and tabulated results are provided below.



2018 Water Column Turbidity Data
(Corrective Action Level = 25 NTU above WC-UP Level)

		Monitoring Station ID (see figure)							
Date	Action Level Check	WC-UP (0.5x)	WC-NF (0.2x)	WC-NF (0.8x)	WC-MOUT H (0.2x)	WC-MOUT H (0.8x)	WC-SLR (0.2x)	WC-SLR (0.8x)	Notes
Aug 1	All Below	0.7	0.3	0.0	0.5	0.1	0.6	0.3	--
Aug 2	All Below	0.4	0.2	0.0	0.6	0.7	0.7	1.0	--
Aug 3	All Below	0.9	0.0	0.2	0.7	0.8	1.2	1.1	--
Aug 6	All Below	0.9	0.3	0.3	0.6	0.7	0.9	1.2	--
Aug 7	All Below	0.9	1.8	1.4	0.8	0.8	0.9	0.5	--
Aug 8	All Below	0.6	1.6	0.3	1.0	1.0	0.6	0.4	--
Aug 9	All Below	2.2	1.6	2.3	2.0	1.0	2.0	1.0	--
Aug 10	All Below	0.8	1.6	1.4	1.1	1.1	0.9	0.9	--
Aug 13	All Below	0.6	2.0	2.3	0.7	1.4	0.8	0.6	--
Aug 14	All Below	0.6	1.8	2.4	1.7	1.7	0.6	0.8	--
Aug 15	All Below	0.6	1.6	1.8	1.0	0.9	0.3	0.3	--
Aug 16	All Below	0.4	1.6	1.5	2.0	1.7	0.5	1.3	--
Aug 17	All Below	1.2	2.0	1.8	2.0	1.4	0.9	1.2	--
Aug 20	All Below	0.4	1.6	2.0	1.8	1.0	0.4	0.4	--
Aug 21	All Below	0.5	1.5	1.6	1.9	2.0	0.9	1.0	--
Aug 22	All Below	0.7	2.1	1.8	1.6	1.2	1.1	0.6	--

2018 Water Column PCB Data
(Corrective Action Level = 0.5 micrograms per liter)

		Monitoring Station ID (see figure)			
Date	Action Level Check	WC-NF	WC-MOUTH	WC-SLR	Notes
Monitoring activities not conducted at this location in August 2018.					

Total PCBs (micrograms per liter)

Water Intake Monitoring Locations



2018 Water Intake Turbidity Data
(Corrective Action Level = 25 NTU above Baseline Level)

		Monitoring Station ID (see figure)			
Date	Action Level Check	IN-AE-RAW	IN-SRMT-RAW	IN-SRMT-FIL	Notes
Aug 1	All Below	1.2	0.8	1.0	--
Aug 2	All Below	0.4	0.5	0.4	--
Aug 3	All Below	0.7	0.5	0.6	--
Aug 6	All Below	1.5	0.5	--	--
Aug 7	All Below	0.4	0.5	0.4	--
Aug 8	All Below	0.4	1.1	0.4	--
Aug 9	All Below	0.5	1.5	0.5	--
Aug 10	All Below	1.4	0.6	0.2	--
Aug 13	All Below	0.6	0.8	0.3	--
Aug 14	All Below	0.6	1.1	0.9	--
Aug 15	All Below	0.4	0.3	0.3	--

		Monitoring Station ID (see figure)			
Date	Action Level Check	IN-AE-RAW	IN-SRMT-RAW	IN-SRMT-FIL	Notes
Aug 16	All Below	0.3	0.8	0.6	--
Aug 17	All Below	0.4	0.8	0.9	--
Aug 20	All Below	0.9	0.4	0.2	--
Aug 21	All Below	0.5	0.6	0.4	--
Aug 22	All Below	1.3	2.1	1.3	--

NA = Data not collected or recorded

Turbidity (nephelometric turbidity unit; NTU)

2018 Water Intake PCB Data
(Corrective Action Level = 0.5 microgram per liter)

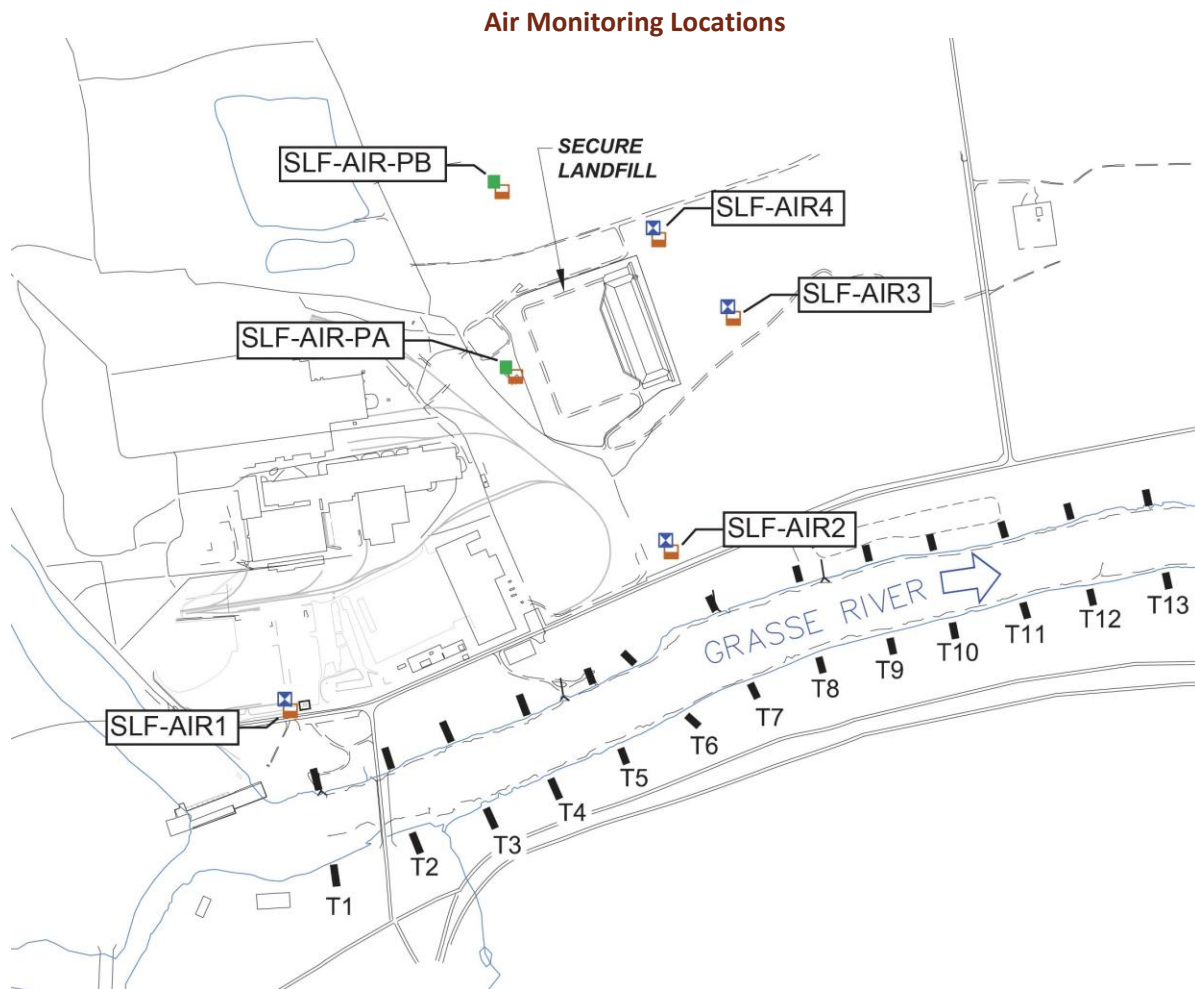
		Monitoring Station ID (see figure)			
Date	Action Level Check	IN-AE-RAW	IN-SRMT-RAW	IN-SRMT-FIL	Notes
Monitoring activities not conducted at this location in August 2018.					

Total PCBs (micrograms per liter)

September 2019

Air Monitoring - 2018 Secure Landfill Construction and Operation

Program includes particulate monitoring using real-time meters for particulates (or dust) and volatile organic compounds (VOCs) and sampling for PCB analytical testing. Corrective action levels have been established based on levels that are safe for the community for particulates, VOCs, and PCBs. The actual monitoring results are compared to the corrective action levels to determine if adjustments in construction are needed. The air monitoring locations and tabulated results are provided below.



2018 Air Particulate Data

(Corrective Action Level = 0.150 milligram per cubic meter above upwind location)

		Monitoring Station ID (see figure)						
Date	Action Level Check	SLF-AIR1	SLF-AIR2	SLF-AIR3	SLF-AIR4	SLF-AIR-PA	SLF-AIR-PB	Notes
Sept 1	All Below	0.0131	0.0132	0.021	0.011	--	--	--
Sept 2	All Below	0.0207	0.0535	0.0223	0.0155	--	--	--
Sept 3	All Below	0.0193	0.0534	0.0197	0.0149	--	--	--
Sept 4	All Below	0.0159	0.0146	0.0401	0.0123	--	--	--
Sept 5	All Below	0.0202	0.0132	0.0332	0.0137	--	--	--
Sept 6	All Below	0.03	0.0231	0.037	0.024	--	--	--
Sept 7	All Below	0.0164	0.0061	0.106	0.006	--	--	--
Sept 8	All Below	0.0203	0.0091	0.0997	0.0101	--	--	--
Sept 9	All Below	0.0064	0.005	0.0111	0.004	--	--	--
Sept 10	All Below	0.0263	0.0065	0.0131	0.0053	--	--	--
Sept 11	All Below	0.0199	0.0041	0.0109	0.004	--	--	--
Sept 12	All Below	0.0139	0.0097	0.0182	0.0061	--	--	--
Sept 13	All Below	0.0161	0.0485	0.1203	0.0088	0.0158	0.0145	--
Sept 14	All Below	0.0342	0.016	0.1547	0.0131	0.0245	0.0131	--
Sept 15	All Below	0.0263	0.0169	0.1811	0.0131	0.0397	0.0148	--
Sept 16	All Below	0.0134	0.0109	0.029	0.01	0.0214	--	--

		Monitoring Station ID (see figure)						
Date	Action Level Check	SLF-AIR1	SLF-AIR2	SLF-AIR3	SLF-AIR4	SLF-AIR-PA	SLF-AIR-PB	Notes
Sept 17	All Below	0.0308	0.0233	0.013	0.0189	--	--	--
Sept 18	All Below	0.0131	0.0126	0.0321	0.0108	--	--	--
Sept 19	All Below	0.0169	0.0141	0.0341	0.0117	--	--	--
Sept 20	All Below	0.0435	0.017	0.1976	0.0123	0.0184	0.0129	--
Sept 21	All Below	0.0291	0.0214	0.0419	0.0194	0.025	0.019	--
Sept 22	All Below	0.0917	0.026	0.0405	0.0201	--	--	--
Sept 23	All Below	0.0133	0.007	0.0169	0.0075	--	--	--
Sept 24	All Below	0.0067	0.0065	0.009	0.0077	--	--	--
Sept 25	All Below	0.0082	0.006	0.0111	0.005	--	--	--
Sept 26	All Below	0.0155	0.0073	0.0152	0.008	--	--	--
Sept 27	All Below	0.0285	0.0087	0.0175	0.0123	0.0167	0.009	--
Sept 28	All Below	0.0349	0.0099	0.032	0.0062	0.0367	0.0131	--
Sept 29	All Below	0.0155	0.0411	0.014	0.0089	0.0059	0.0053	--
Sept 30	All Below	0.0054	0.0059	0.0433	0.0253	--	--	--

NA = Data not collected

Particulates (milligrams per cubic meter)

2018 Air Volatile Organic Compound Data
(Corrective Action Level = 25 ppm above upwind location)

		Monitoring Station ID (see figure)						
Date	Action Level Check	SLF-AIR1	SLF-AIR2	SLF-AIR3	SLF-AIR4	SLF-AIR-PA	SLF-AIR-PB	Notes
Sept 1	All Below	0.0107	0.0212	0.0795	0.004	--	--	--
Sept 2	All Below	0.0511	0.0106	0.0101	0.0381	--	--	--
Sept 3	All Below	0.044	0.0105	0	0.0295	--	--	--
Sept 4	All Below	0.4038	0.1541	0.1466	0.0681	--	--	--
Sept 5	All Below	0	0.0643	0.1397	0.0562	--	--	--
Sept 6	All Below	0	0.0058	0	0.0251	--	--	--
Sept 7	All Below	0.7437	0.0923	0.0942	0.0274	--	--	--
Sept 8	All Below	0	0.0606	0.0714	0.1059	--	--	--
Sept 9	All Below	0.0861	0.0875	0.0279	0.0216	--	--	--
Sept 10	All Below	0.0919	0.0933	0.0768	0.0424	--	--	--
Sept 11	All Below	0.0121	0.0177	0.0038	0.0365	--	--	--
Sept 12	All Below	0.0045	0.0149	0.0055	0.0084	--	--	--
Sept 13	All Below	0.0347	0.0381	0.0619	0.0665	0.094	0.4153	--
Sept 14	All Below	0.0425	0.0428	0.1458	0.0664	1.9217	0.2038	--
Sept 15	All Below	0.0196	0.009	0.1645	0.048	0.744	0.3369	--
Sept 16	All Below	0	0.0003	0.0974	0.0214	3.0511	0.1861	--

		Monitoring Station ID (see figure)						
Date	Action Level Check	SLF-AIR1	SLF-AIR2	SLF-AIR3	SLF-AIR4	SLF-AIR-PA	SLF-AIR-PB	Notes
Sept 17	All Below	0	0	0.1462	0.0682	--	--	--
Sept 18	All Below	0.08	0	0.0534	0.0354	--	--	--
Sept 19	All Below	0.2881	0.0057	0.0497	0.0443	--	--	--
Sept 20	All Below	0.4827	0.0433	0.1302	0.0317	0.03	0.0777	--
Sept 21	All Below	0.4375	0.0295	0.1193	0.0022	0.0729	0.0925	--
Sept 22	All Below	0.1247	0.0064	0.0005	0.0757	--	--	--
Sept 23	All Below	0.1805	0.0595	0.0178	0.0735	--	--	--
Sept 24	All Below	0.199	0.0575	0.0103	0.0271	--	--	--
Sept 25	All Below	0.0431	0.0043	0.0157	0.029	--	--	--
Sept 26	All Below	0.0024	0.0075	0.0288	0	--	--	--
Sept 27	All Below	0.9779	0.0895	0.0325	0.1088	0.1633	0.2011	--
Sept 28	All Below	0.9819	0.0603	0.0325	0.1127	0.0338	0.289	--
Sept 29	All Below	0.9747	0.0229	0.0259	0.0005	0.0149	0.1365	--
Sept 30	All Below	0.1.5527	0.0234	0.0863	0.0418	--	--	--

NA = Data not collected

Volatile Organic Compounds (VOCs parts per million)

2018 Air PCB Data

Corrective Action Level = 0.100 microgram per cubic meter

		Monitoring Station ID (see figure)						
Date	Action Level Check	SLF-AIR1	SLF-AIR2	SLF-AIR3	SLF-AIR4	SLF-AIR-PA	SLF-AIR-PB	Notes
Sept 1	All Below	0.000840	0.001000	0.001500	0.001300	--	--	--
Sept 2	All Below	0.000830	0.001500	0.001300	0.001900	--	--	--
Sept 3	All Below	0.000730	0.002000	0.001700	0.002200	--	--	--
Sept 4	All Below	0.001500	0.001600	0.001500	0.002100	--	--	--
Sept 5	All Below	0.000670	0.001200	0.000960	0.001100	--	--	--
Sept 6	All Below	0.001200	0.002800	0.001800	0.002500	--	--	--
Sept 7	All Below	0.000730	0.000580	0.000560	0.002100	--	--	--
Sept 12	All Below	0.000670	0.000710	0.000700	0.000880	--	--	--
Sept 13	All Below	0.000730	0.000570	0.000520	0.000950	Below Detectable Levels	Below Detectable Levels	--
Sept 14	All Below	0.000490	0.000590	0.000770	0.001000	Below Detectable Levels	Below Detectable Levels	--
Sept 15	All Below	0.000780	0.000810	0.001200	0.001600	Below Detectable Levels	Below Detectable Levels	--
Sept 16	All Below	0.000860	0.001400	0.001400	0.002000	--	--	--
Sept 17	All Below	0.000880	0.000950	0.001400	0.001800	--	--	--
Sept 18	All Below	0.000470	0.001900	0.001600	0.001700	--	--	--
Sept 19	All Below	0.000540	0.000660	0.000650	0.000820	--	--	--

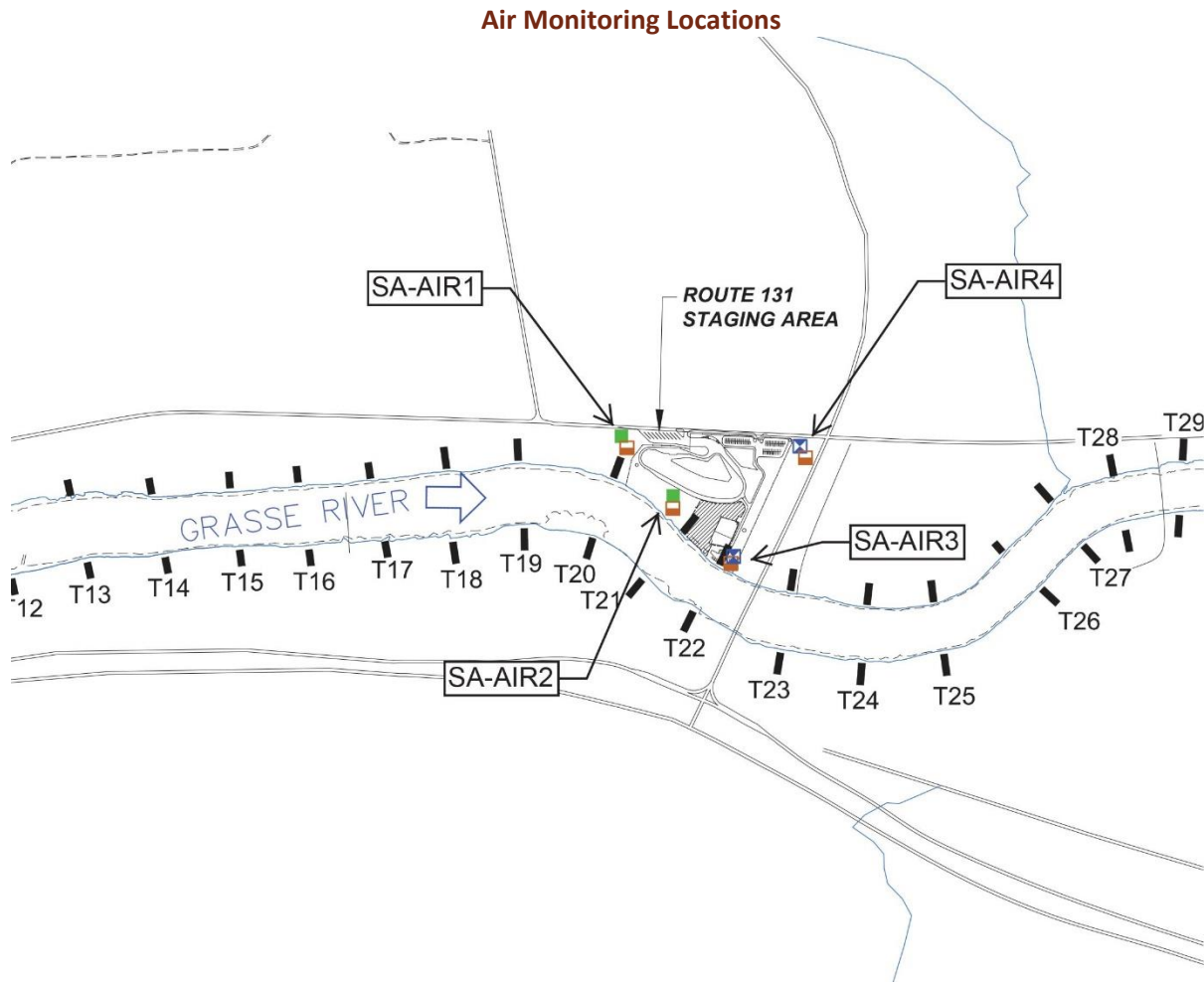
		Monitoring Station ID (see figure)						
Date	Action Level Check	SLF-AIR1	SLF-AIR2	SLF-AIR3	SLF-AIR4	SLF-AIR-PA	SLF-AIR-PB	Notes
Sept 20	All Below	0.000350	0.000260	0.000320	0.000380	Below Detectable Levels	Below Detectable Levels	--
Sept 21	All Below	0.000320	0.000240	0.000270	0.000480	Below Detectable Levels	Below Detectable Levels	--
Sept 22	All Below	0.000360	0.001000	0.000500	0.000870	--	--	--
Sept 23	All Below	0.000230	0.000400	0.000310	0.000330	--	--	--
Sept 24	All Below	0.000230	0.000350	0.000270	0.000260	--	--	--
Sept 27	All Below	0.000250	0.001100	0.000360	0.000700	--	--	--

NA = Analysis not required

Total PCBs (micrograms per cubic meter)

Air Monitoring - 2018 Route 131 Staging Area Construction

Program includes particulate monitoring using real-time meters for particulates (or dust) and volatile organic compounds (VOCs) and sampling for PCB analytical testing. Corrective action levels have been established based on levels that are safe for the community for particulates, VOCs, and PCBs. The actual monitoring results are compared to the corrective action levels to determine if adjustments in construction are needed. The air monitoring locations and tabulated results are provided below.



2018 Air Particulate Data

Corrective Action Level = 0.150 milligram per cubic meter above upwind location

Date	Action Level Check	Monitoring Station ID (see figure)				Notes
		SA-AIR1	SA-AIR2	SA-AIR3	SA-AIR4	
Sept 1	All Below	0.0607	0.0093	0.02	0.0218	--
Sept 5	All Below	0.0327	0.0277	0.04	0.0197	--
Sept 6	All Below	0.053	0.0437	0.0379	0.0305	--
Sept 7	All Below	0.0149	0.0132	0.0175	0.014	--
Sept 8	All Below	0.0244	0.0262	0.0453	0.021	--
Sept 10	All Below	0.0083	0.009	0.005	0.005	--
Sept 11	All Below	0.0087	0.0147	0.0042	0.0017	--
Sept 12	All Below	0.0154	0.015	0.0122	0.0134	--
Sept 13	All Below	0.0255	0.0329	0.0347	0.327	--
Sept 14	All Below	0.0307	0.0281	0.0201	0.0381	--
Sept 15	All Below	0.0499	0.0305	0.0184	0.0363	--
Sept 16	All Below	0.0153	0.012	0.0148	0.017	--
Sept 18	All Below	0.0225	0.0214	0.0207	0.0299	--
Sept 19	All Below	0.0415	0.0213	0.0218	0.0315	--
Sept 20	All Below	0.0542	0.0295	0.0205	0.0313	--
Sept 21	All Below	0.0505	0.0375	0.0295	0.0405	--
Sept 22	All Below	0.0387	0.0267	0.0241	0.0278	--
Sept 23	All Below	0.0591	0.0109	0.0103	0.0169	--
Sept 25	All Below	0.0739	0.0136	0.0081	0.0093	--
Sept 26	All Below	0.0097	0.0095	0.006	0.0083	--
Sept 27	All Below	0.0099	0.0173	0.0181	0.2217	--
Sept 28	All Below	0.01	0.0121	0.08	0.032	--
Sept 29	All Below	0.008	0.0081	0.0102	0.0199	--

NA = Data not collected or recorded
 Particulates (milligrams per cubic meter)

2018 Air Volatile Organic Compound Data
(Corrective Action Level = 25 ppm above upwind location)

		Monitoring Station ID (see figure)				
Date	Action Level Check	SA-AIR1	SA-AIR2	SA-AIR3	SA-AIR4	Notes
Sept 1	All Below	0.0637	0.0183	0.0495	0.0736	--
Sept 5	All Below	0.94	7.6034	0.7219	0.0175	--
Sept 6	All Below	0	0.2184	0.3699	0.0283	--
Sept 7	All Below	0.0657	0.1447	0.0015	0.2061	--
Sept 8	All Below	0.1103	0.2454	0.0195	0.2056	--
Sept 10	All Below	0.0893	0.1839	0.4151	0.0332	--
Sept 11	All Below	0.1009	0.285	0.4797	0.0978	--
Sept 12	All Below	0.0244	0.265	0.3645	0.0917	--
Sept 13	All Below	0.0127	0.0933	0.1109	0.1053	--
Sept 14	All Below	0.0223	0.2688	0.1635	0.1151	--
Sept 15	All Below	0.0293	1.5313	0.2179	0.0963	--
Sept 16	All Below	0	0.2805	0.5505	0	--
Sept 18	All Below	0.1183	2.0385	1.0937	0.1211	--
Sept 19	All Below	0.0765	0.3091	0.9041	0.1202	--
Sept 20	All Below	0.1401	0.2288	0.2329	0.1413	--
Sept 21	All Below	0.0986	0.1745	0.2207	0.1041	--
Sept 22	All Below	0.0337	0.2743	0.1201	0.0007	--
Sept 23	All Below	0.0731	0.7692	1.0303	0.2216	--
Sept 25	All Below	0.026	1.5484	1.2699	0.1599	--
Sept 26	All Below	0.032	4.2268	1.7744	0.1741	--
Sept 27	All Below	0.0001	4.0473	1.7659	0.2562	--
Sept 28	All Below	0	4.4616	0.7257	0.2292	--
Sept 29	All Below	0.0015	3.9939	0.022	0.0091	--

NA = Data not collected or recorded
Volatile Organic Compounds (VOCs parts per million)

2018 Air PCB Data

Corrective Action Level = 0.100 microgram per cubic meter

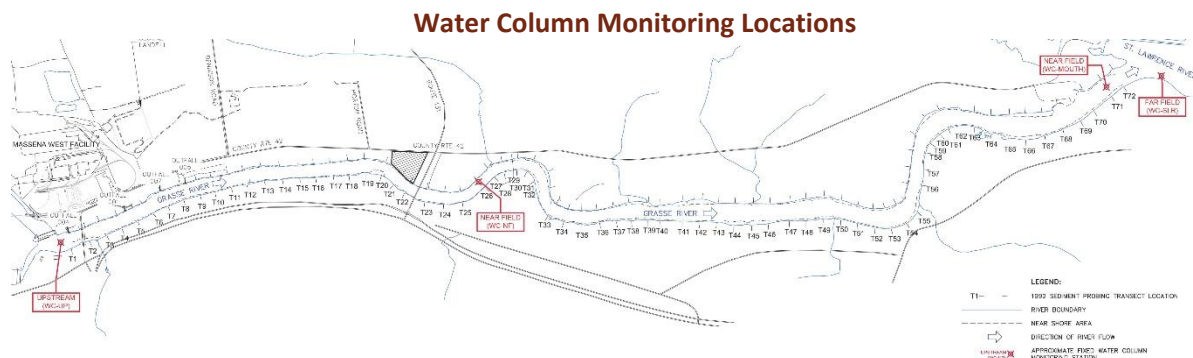
Date	Action Level Check	Monitoring Station ID (see figure)				Notes
		SA-AIR1	SA-AIR2	SA-AIR3	SA-AIR4	
Sept 27	All Below	Below Detectable Levels	0.002000	0.000370	0.000490	--

NA = Data not collected or recorded

Total PCBs (micrograms per cubic meter)

Water Monitoring - 2018 Route 131 Staging Area Construction

Program includes turbidity monitoring using real-time meters for solids and PCB analytical testing at water column and water intake locations. Corrective action levels have been established based on levels that are safe for the community for both turbidity and PCBs. The actual monitoring results will be compared to the corrective action levels to determine if adjustments in construction are needed. The water locations and tabulated results are provided below.



2018 Water Column Turbidity Data
(Corrective Action Level = 25 NTU above WC-UP Level)

		Monitoring Station ID (see figure)							
Date	Action Level Check	WC-UP (0.5x)	WC-NF (0.2x)	WC-NF (0.8x)	WC-MOUTH (0.2x)	WC-MOUTH (0.8x)	WC-SLR (0.2x)	WC-SLR (0.8x)	Notes
Sept 24	All Below	0.5	4.3	3.9	4.3	4.4	3.5	2.9	--
Sept 25	All Below	0.8	2.7	3.8	3.6	3.9	2.9	2.4	--
Sept 26	All Below	0.6	2.3	2.8	3.1	3.1	1.4	2.1	--
Sept 27	All Below	0.3	2.7	3.4	3.4	3.9	2.3	1.7	--
Sept 28	All Below	0.85	1.2	2.0	2.7	3.6	1.0	0.9	--

Turbidity (nephelometric turbidity unit; NTU)

2018 Water Column PCB Data
(Corrective Action Level = 0.5 microgram per liter)

		Monitoring Station ID (see figure)			
Date	Action Level Check	WC-NF	WC-MOUTH	WC-SLR	Notes
Monitoring activities not conducted at this location in September 2018.					

Total PCBs (micrograms per liter)

Water Intake Monitoring Locations (click to enlarge)



**2018 Water Intake Turbidity Data
(Corrective Action Level = 25 NTU above Baseline Level)**

Date	Action Level Check	Monitoring Station ID (see figure)			Notes
		IN-AE-RAW	IN-SRMT-RAW	IN-SRMT-FIL	
Sept 24	All Below	1.4	1.5	0.2	--
Sept 25	All Below	2.0	1.7	0.5	--
Sept 26	All Below	0.6	1.9	0.1	--
Sept 27	All Below	0.7	1.2	0.4	--
Sept 28	All Below	1.2	1.6	0.2	--

NA = Data not collected or recorded
Turbidity (nephelometric turbidity unit; NTU)

**2018 Water Intake PCB Data
(Corrective Action Level = 0.5 microgram per liter)**

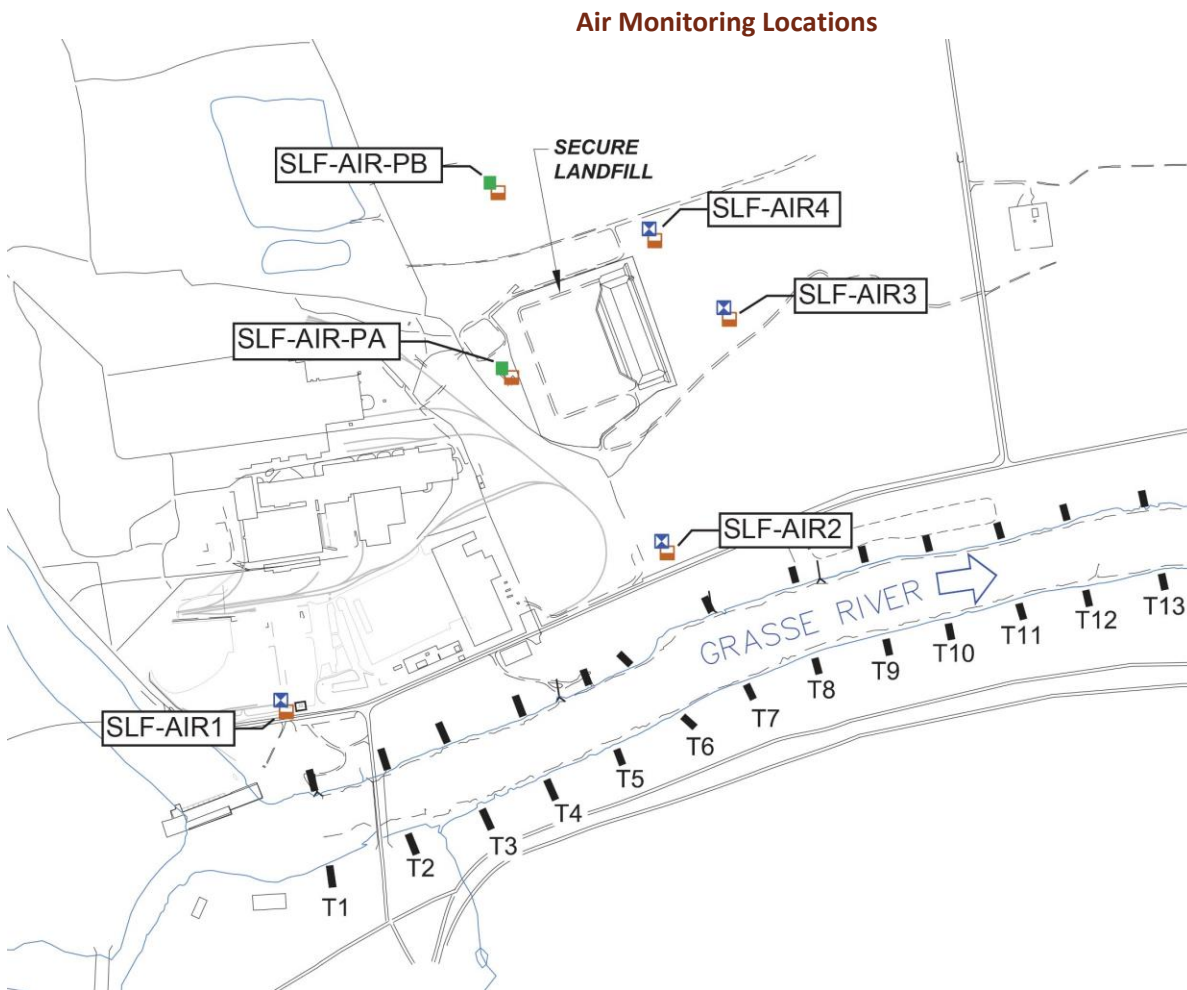
Date	Action Level Check	Monitoring Station ID (see figure)			Notes
		IN-AE-RAW	IN-SRMT-RAW	IN-SRMT-FIL	
Monitoring activities not conducted at this location in September 2018.					

Total PCBs (micrograms per liter)

October 2018

Air Monitoring - 2018 Secure Landfill Construction and Operation

Program includes particulate monitoring using real-time meters for particulates (or dust) and volatile organic compounds (VOCs) and sampling for PCB analytical testing. Corrective action levels have been established based on levels that are safe for the community for particulates, VOCs, and PCBs. The actual monitoring results are compared to the corrective action levels to determine if adjustments in construction are needed. The air monitoring locations and tabulated results are provided below.



2018 Air Particulate Data

(Corrective Action Level = 0.150 milligram per cubic meter above upwind location)

		Monitoring Station ID (see figure)						
Date	Action Level Check	SLF-AIR1	SLF-AIR2	SLF-AIR3	SLF-AIR4	SLF-AIR-PA	SLF-AIR-PB	Notes
Oct 1	All Below	0.007	0.0058	0.009	0.0025	--	--	--
Oct 2	All Below	0.245	0.017	0.0321	0.0094	0.0103	0.003	--
Oct 3	All Below	0.015	0.0064	0.0192	0.005	--	--	--
Oct 4	All Below	0.0267	0.044	0.0349	0.0159	--	--	--
Oct 5	All Below	0.0285	0.0241	0.0372	0.0183	0.0321	0.016	--
Oct 6	All Below	0.0137	0.0064	0.0093	0.005	0.0061	0.0025	--
Oct 7	All Below	0.0351	0.0326	0.0511	0.0145	--	--	--
Oct 8	All Below	0.0306	0.0208	0.0389	0.0155	--	--	--
Oct 9	All Below	0.0278	0.0182	0.0335	0.0097	0.0127	0.0059	--
Oct 10	All Below	0.0679	0.0361	0.0883	0.0208	0.4505	0.02	--
Oct 11	All Below	0.042	0.0502	0.0635	0.0228	0.0351	0.0292	--
Oct 12	All Below	0.034	0.0248	0.0537	0.0205	0.0226	0.0129	--
Oct 13	All Below	0.0085	0.005	0.0117	0.0024	0.005	0.0037	--
Oct 14	All Below	0.0143	0.0079	0.0205	0.006	--	--	--
Oct 15	All Below	0.0231	0.0107	0.0496	0.0105	--	--	--
Oct 16	All Below	0.0162	0.0125	0.0221	0.009	--	--	--

		Monitoring Station ID (see figure)						
Date	Action Level Check	SLF-AIR1	SLF-AIR2	SLF-AIR3	SLF-AIR4	SLF-AIR-PA	SLF-AIR-PB	Notes
Oct 17	All Below	0.0173	0.0131	0.0227	0.0104	0.0099	0.0053	--
Oct 18	All Below	0.0115	0.1137	0.0141	0.007	0.0087	0.01	--
Oct 19	All Below	0.0097	0.017	0.0129	0.0064	0.0075	0.0041	--
Oct 20	All Below	0.0109	0.017	0.0171	0.0106	--	--	--
Oct 21	All Below	0.0091	0.0097	0.0104	0.004	--	--	--
Oct 22	All Below	0.0063	0.0062	0.0091	0.0036	--	--	--
Oct 23	All Below	0.0149	0.0136	0.0279	0.0085	0.0134	0.0129	--
Oct 24	All Below	0.0188	0.0327	0.0291	0.0151	0.0177	0.021	--
Oct 25	All Below	0.0095	0.026	0.0134	0.0077	0.0083	0.0099	--
Oct 26	All Below	0.0096	0.012	0.0091	0.0034	0.0044	0.0069	--
Oct 27	All Below	0.0204	0.0204	0.0245	0.0109	0.0164	--	--
Oct 28	All Below	0.017	0.02	0.0289	0.0087	--	--	--
Oct 29	All Below	0.0208	0.0137	0.0187	0.007	--	--	--
Oct 30	All Below	0.0147	0.0158	0.0229	0.0093	0.0091	0.0151	--
Oct 31	All Below	0.0157	0.0275	0.0275	0.0103	0.0165	0.0055	--

NA = Data not collected

Particulates (milligrams per cubic meter)

2018 Air Volatile Organic Compound Data
(Corrective Action Level = 25 ppm above upwind location)

		Monitoring Station ID (see figure)						
Date	Action Level Check	SLF-AIR1	SLF-AIR2	SLF-AIR3	SLF-AIR4	SLF-AIR-PA	SLF-AIR-PB	Notes
Oct 1	All Below	3.1329	0.0185	0	0.0232	--	--	--
Oct 2	All Below	8.3183	0.0091	0.0111	0.0049	0.0591	0.2869	SLF-AIR1 levels not related to field activities.
Oct 3	All Below	8.4155	0.0003	0.0217	0.0015	--	--	SLF-AIR1 levels not related to field activities.
Oct 4	All Below	18.353	0.0023	0.0894	0.0013	--	--	SLF-AIR1 levels not related to field activities.
Oct 5	All Below	13.428	0.0557	0.0617	0.1439	0.0519	0.6173	SLF-AIR1 levels not related to field activities.
Oct 6	All Below	3.5185	0.0558	0.0209	0.1441	0.0395	0.0235	--
Oct 7	All Below	22.521	0.0349	0.0293	0.0013	--	--	SLF-AIR1 levels not related to field activities.

		Monitoring Station ID (see figure)						
Date	Action Level Check	SLF-AIR1	SLF-AIR2	SLF-AIR3	SLF-AIR4	SLF-AIR-PA	SLF-AIR-PB	Notes
Oct 8	All Below	17.236	0.0332	0.0116	0.0548	--	--	--
Oct 9	All Below	0.0759	0.0277	0.0966	0.0549	1.421	0.3103	--
Oct 10	All Below	0.0438	0.0227	0.3296	0.3217	604.74	0.6015	SLF-AIR-PA levels not related to field activities.
Oct 11	All Below	0.0403	0.0473	0.1013	0.2867	6.4057	0.7637	SLF-AIR-PA levels not related to field activities.
Oct 12	All Below	0.0281	0.0301	0.1018	0.0509	7.9441	0.3453	SLF-AIR-PA levels not related to field activities.
Oct 13	All Below	0.0115	0.0426	0.0186	0.0502	6.8856	0.1193	SLF-AIR-PA levels not related to field activities.
Oct 14	All Below	0.0154	0.0511	0.0105	0.0787	--	--	--
Oct 15	All Below	0.016	0.0285	0.0702	0.0741	--	--	--
Oct 16	All Below	0.0083	0.0263	0.0557	0.0421	--	--	--
Oct 17	All Below	0.0029	0.0004	0.0207	0.0352	0.0813	0.2787	--
Oct 18	All Below	0.0143	0.0313	0.0647	0.1781	0.0954	0.2732	--

		Monitoring Station ID (see figure)						
Date	Action Level Check	SLF-AIR1	SLF-AIR2	SLF-AIR3	SLF-AIR4	SLF-AIR-PA	SLF-AIR-PB	Notes
Oct 19	All Below	0.0069	0.0311	0.0511	0.1728	--	--	--
Oct 20	All Below	0.0001	0.0692	0.0259	0.0001	--	--	--
Oct 21	All Below	0.0217	0.0686	0.0919	0.1744	--	--	--
Oct 22	All Below	0.0101	0.028	0.0994	0.1863	--	--	--
Oct 23	All Below	0.0016	0.0261	0.006	0.0101	0.2283	0.2236	--
Oct 24	All Below	0.0147	0.0232	0.037	0.0009	0.1645	0.2955	--
Oct 25	All Below	0.0139	0.0165	0.0387	0.0477	0.046	0.2595	--
Oct 26	All Below	0.0135	0.0219	0.0397	0.0535	0.0254	0.1525	--
Oct 27	All Below	0.0831	0.0184	0.0189	0.0229	0.0407	--	--
Oct 28	All Below	0.0076	0.0108	0.0157	0.0001	--	--	--
Oct 29	All Below	0.0001	0.0039	0.1141	0.0071	--	--	--
Oct 30	All Below	0.0017	0.0081	0.0039	0.0002	0.9923	--	--
Oct 31	All Below	0.0063	0.022	0.0223	0.0137	0.0327	--	--

NA = Data not collected

Volatile Organic Compounds (VOCs parts per million)

2018 Air PCB Data

(Corrective Action Level = 0.100 microgram per cubic meter)

		Monitoring Station ID (see figure)						
Date	Action Level Check	SLF-AIR1	SLF-AIR2	SLF-AIR3	SLF-AIR4	SLF-AIR-PA	SLF-AIR-PB	Notes
Oct 1	All Below	0.000250	0.000400	0.000340	0.000290	--	--	--
Oct 2	All Below	0.000240	0.000220	0.000310	0.000300	Below Detectable Levels	Below Detectable Levels	--
Oct 3	All Below	0.000210	0.000260	0.000350	0.000260	--	--	--
Oct 4	All Below	0.000300	0.000330	0.000270	0.000410	--	--	--
Oct 5	All Below	0.000240	0.000610	0.000330	0.000410	--	--	--
Oct 6	All Below	0.000230	0.000150	0.000150	0.000280	Below Detectable Levels	Below Detectable Levels	--
Oct 7	All Below	0.000290	0.000330	0.000240	0.000370	--	--	--
Oct 8	All Below	0.000250	0.000250	0.000160	0.000360	--	--	--
Oct 9	All Below	0.000380	0.000380	0.000430	0.000400	Below Detectable Levels	Below Detectable Levels	--
Oct 10	All Below	0.000250	0.003100	0.001700	0.001900	Below Detectable Levels	--	--
Oct 11	All Below	0.000630	0.001000	0.000720	0.000900	Below Detectable Levels	--	--
Oct 12	All Below	0.000380	0.000400	0.000360	0.000440	Below Detectable Levels	Below Detectable Levels	--
Oct 13	All Below	0.000110	Below Detectable Levels	0.000230	0.000180	Below Detectable Levels	Below Detectable Levels	--

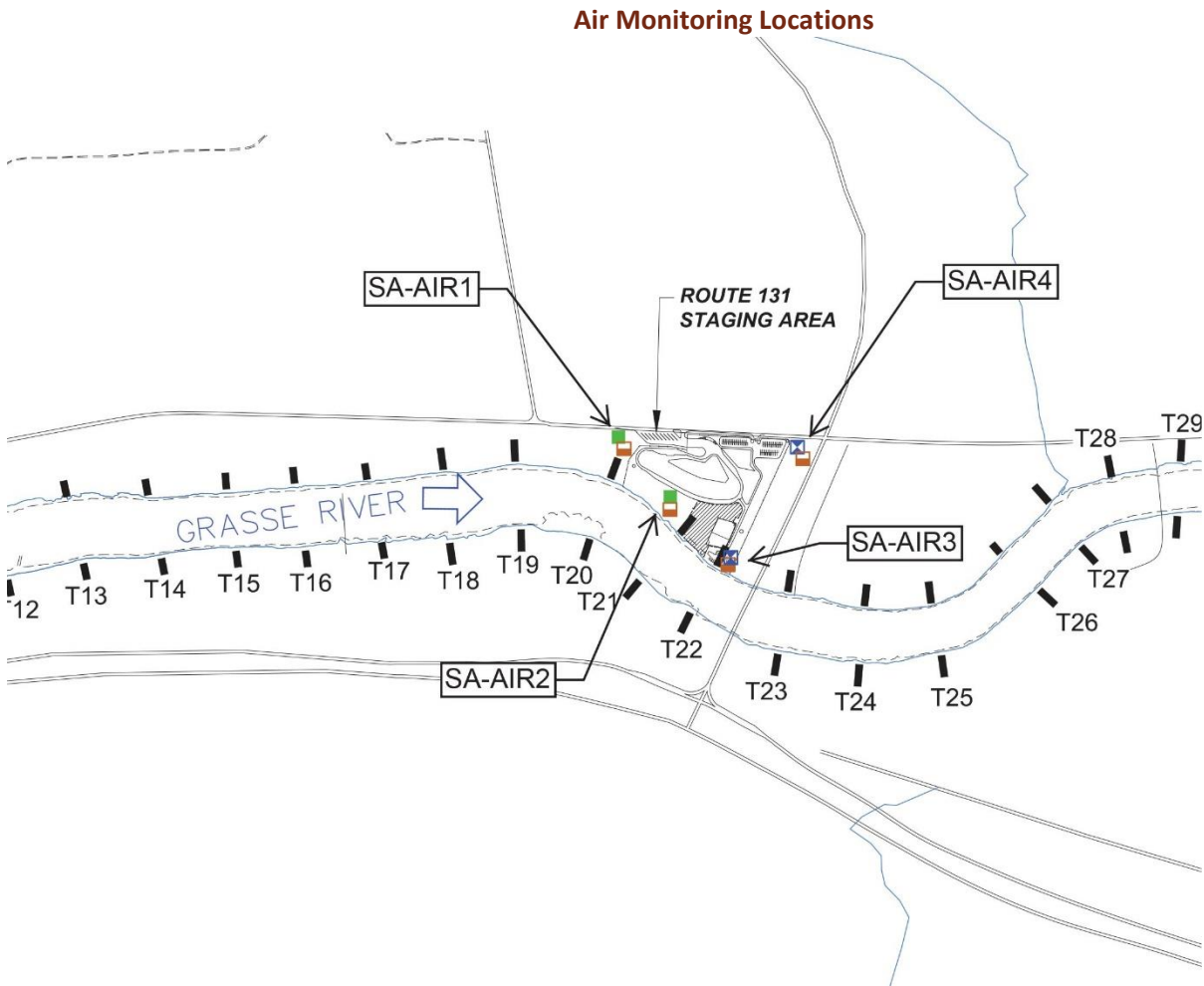
		Monitoring Station ID (see figure)						
Date	Action Level Check	SLF-AIR1	SLF-AIR2	SLF-AIR3	SLF-AIR4	SLF-AIR-PA	SLF-AIR-PB	Notes
Oct 14	All Below	0.000120	0.000260	0.000150	0.000180	--	--	--
Oct 15	All Below	0.000190	0.000320	0.000310	0.000270	--	--	--
Oct 17	All Below	0.000140	0.000320	Below Detectable Levels	0.000360	Below Detectable Levels	--	--
Oct 18	All Below	0.000140	0.000160	0.000077	0.000092	Below Detectable Levels	--	--
Oct 19	All Below	0.000072	0.000220	0.000150	0.000260	Below Detectable Levels	--	--
Oct 20	All Below	Below Detectable Levels	0.000260	Below Detectable Levels	0.000640	--	--	--
Oct 21	All Below	0.000160	0.000270	0.000250	0.000240	--	--	--
Oct 22	All Below	0.000069	0.000190	0.000250	0.000240	--	--	--
Oct 23	All Below	0.000210	0.000220	0.000150	0.000200	Below Detectable Levels	Below Detectable Levels	--
Oct 24	All Below	0.000220	0.000230	Below Detectable Levels	0.000720	Below Detectable Levels	Below Detectable Levels	--

NA = Analysis not required

Total PCBs (micrograms per cubic meter)

Air Monitoring - 2018 Route 131 Staging Area Construction

Program includes particulate monitoring using real-time meters for particulates (or dust) and volatile organic compounds (VOCs) and sampling for PCB analytical testing. Corrective action levels have been established based on levels that are safe for the community for particulates, VOCs, and PCBs. The actual monitoring results are compared to the corrective action levels to determine if adjustments in construction are needed. The air monitoring locations and tabulated results are provided below.



2018 Air Particulate Data

(Corrective Action Level = 0.150 milligrams per cubic meter above upwind location)

Date	Action Level Check	Monitoring Station ID (see figure)				Notes
		SA-AIR1	SA-AIR2	SA-AIR3	SA-AIR4	
Oct 2	All Below	0.1179	0.0588	0.0207	0.03	--
Oct 3	All Below	0.3784	0.0178	0.013	0.02	--
Oct 4	All Below	0.0205	0.0202	0.015	0.0251	--
Oct 5	All Below	0.0308	0.0323	0.0293	0.0363	--
Oct 6	All Below	0.0073	0.0068	0.005	0.0087	--
Oct 9	All Below	0.0223	0.0262	0.0229	0.0331	--
Oct 10	All Below	0.0399	0.084	0.0498	0.1289	--
Oct 11	All Below	0.0681	0.0526	0.0441	0.0591	--
Oct 12	All Below	0.0344	0.0049	0.0044	0.0048	--

NA = Data not collected or recorded

Particulates (milligrams per cubic meter)

2018 Air Volatile Organic Compound Data

(Corrective Action Level = 25 ppm above upwind location)

Date	Action Level Check	Monitoring Station ID (see figure)				Notes
		SA-AIR1	SA-AIR2	SA-AIR3	SA-AIR4	
Oct 2	All Below	0.1379	7.5797	2.0627	0.0533	SA-AIR2 levels not related to field activities.
Oct 3	All Below	0.0013	7.8886	1.8599	0.0568	--
Oct 4	All Below	0	4.9854	0.8209	0.0225	--
Oct 5	All Below	0.0606	4.3221	0.8055	0.1774	--
Oct 6	All Below	0.0621	0.1707	0.0456	0.1665	--
Oct 9	All Below	0.1602	1.0305	1.385	0.0939	--
Oct 10	All Below	0.0585	6.3904	5.9626	0.0859	SA-AIR3 and SA-

		Monitoring Station ID (see figure)				
Date	Action Level Check	SA-AIR1	SA-AIR2	SA-AIR3	SA-AIR4	Notes
						AIR4 levels not related to field activities.
Oct 11	All Below	0.0359	0.0283	4.2975	0.123	--
Oct 12	All Below	0.0466	0.0229	3.6422	0.1234	--

NA = Data not collected or recorded
 Volatile Organic Compounds (VOCs parts per million)

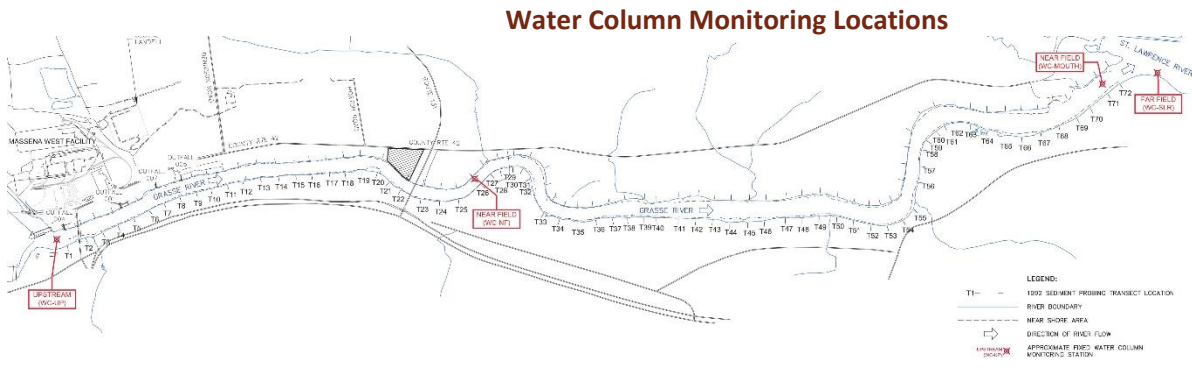
2018 Air PCB Data
(Corrective Action Level = 0.100 microgram per cubic meter)

		Monitoring Station ID (see figure)				
Date	Action Level Check	SA-AIR1	SA-AIR2	SA-AIR3	SA-AIR4	Notes
Monitoring activities not conducted at this location in October 2018.						

NA = Data not collected or recorded
 Total PCBs (micrograms per cubic meter)

Water Monitoring - 2018 Route 131 Staging Area Construction

Program includes turbidity monitoring using real-time meters for solids and PCB analytical testing at water column and water intake locations. Corrective action levels have been established based on levels that are safe for the community for both turbidity and PCBs. The actual monitoring results will be compared to the corrective action levels to determine if adjustments in construction are needed. The water locations and tabulated results are provided below.



2018 Water Column Turbidity Data (Corrective Action Level = 25 NTU above WC-UP Level)

		Monitoring Station ID (see figure)							
Date	Action Level Check	WC-UP (0.5x)	WC-NF (0.2x)	WC-NF (0.8x)	WC-MOUT H (0.2x)	WC-MOUT H (0.8x)	WC-SLR (0.2x)	WC-SLR (0.8x)	Notes
Oct 1	All Below	1.1	1.8	1.7	3.9	2.9	1.5	1.5	--
Oct 2	All Below	0.8	2.4	1.6	4.2	3.7	1.4	1.4	--
Oct 3	All Below	0.8	1.7	1.9	1.7	2.1	0.9	1.0	--
Oct 4	All Below	2.2	1.3	1.4	1.6	2.0	0.9	1.0	--
Oct 5	All Below	0.8	1.2	1.3	3.3	2.8	0.3	0.3	--
Oct 20	All Below	1.5	3.1	3.4	4.9	5.2	0.5	0.3	--

Oct 21	All Below	0.1	3.5	4.1	1.5	3.0	0.4	0.7	--
--------	-----------	-----	-----	-----	-----	-----	-----	-----	----

Turbidity (nephelometric turbidity unit; NTU)

2018 Water Column PCB Data
(Corrective Action Level = 0.5 microgram per liter)

		Monitoring Station ID (see figure)			
Date	Action Level Check	WC-NF	WC-MOUTH	WC-SLR	Notes
Monitoring activities not conducted at this location in October 2018.					

Total PCBs (micrograms per liter)

Water Intake Monitoring Locations



2018 Water Intake Turbidity Data
(Corrective Action Level = 25 NTU above Baseline Level)

		Monitoring Station ID (see figure)			
Date	Action Level Check	IN-AE-RAW	IN-SRMT-RAW	IN-SRMT-FIL	Notes
Oct 1	All Below	--	1.5	0.2	--
Oct 2	All Below	0.8	1.9	0.4	--
Oct 3	All Below	0.8	2.7	0.4	--
Oct 4	All Below	0.7	2.3	0.2	--
Oct 5	All Below	0.7	2.0	0.4	--

		Monitoring Station ID (see figure)			
Date	Action Level Check	IN-AE-RAW	IN-SRMT-RAW	IN-SRMT-FIL	Notes
Oct 20	All Below	1.0	0.9	0.6	--
Oct 22	All Below	0.9	1.1	0.4	--

NA = Data not collected or recorded

Turbidity (nephelometric turbidity unit; NTU)

2018 Water Intake PCB Data
(Corrective Action Level = 0.5 microgram per liter)

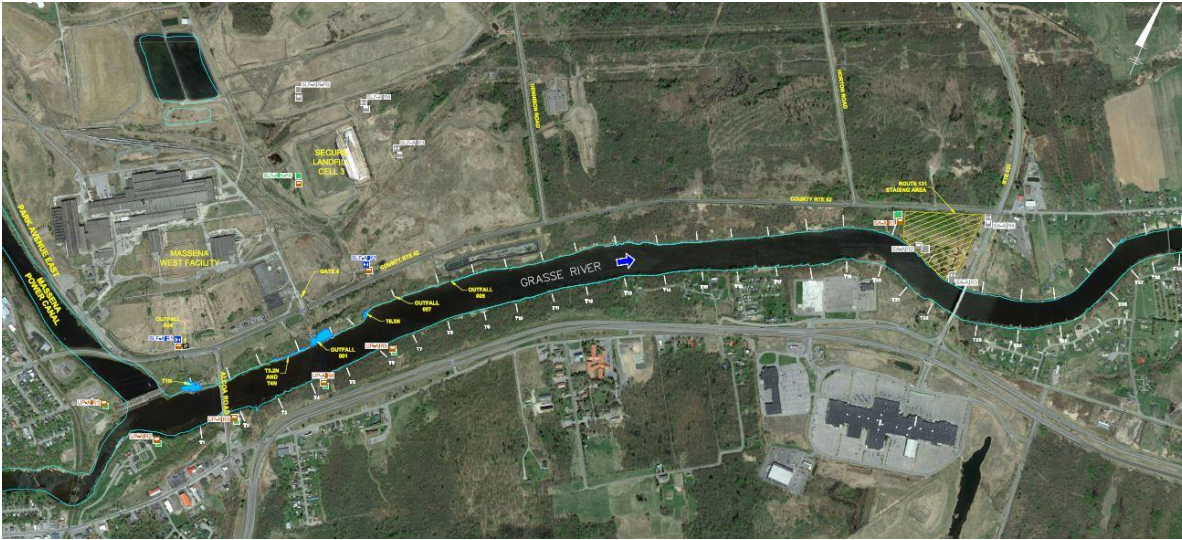
		Monitoring Station ID (see figure)			
Date	Action Level Check	IN-AE-RAW	IN-SRMT-RAW	IN-SRMT-FIL	Notes
Monitoring activities not conducted at this location in October 2018.					

Total PCBs (micrograms per liter)

Air Monitoring - 2018 Soil Removal Areas Along the North Shore

Program includes particulate monitoring using real-time meters for particulates (or dust) and volatile organic compounds (VOCs) and sampling for PCB analytical testing. Corrective action levels have been established based on levels that are safe for the community for particulates, VOCs, and PCBs. The actual monitoring results are compared to the corrective action levels to determine if adjustments in construction are needed. The air monitoring locations and tabulated results are provided below.

Air Monitoring Locations



2018 Air Particulate Data
(Corrective Action Level = 0.150 milligram per cubic meter above upwind location)

		Monitoring Station ID (see figure)									
Date	Action Level Check	UP-AIR1	UP-AIR2	UP-AIR3	UP-AIR4	UP-AIR5	SLF-AIR1	SLF-AIR2	SLF-AIRPA	SA-AIR1	Notes
Oct 9	All Below	0.0164	--	0.0313	0.0127	0.022	0.0278	0.0182	0.0127	0.0223	--
Oct 10	All Below	0.0378	--	0.0604	0.0361	0.0346	0.0679	0.0361	0.4504	0.039	--
Oct 11	All Below	0.0351	--	0.0456	0.0299	0.0315	0.042	0.0502	0.0351	0.0681	--
Oct 12	All Below	0.0246	--	0.0381	0.0236	0.0295	0.034	0.0248	0.0226	0.0344	--
Oct 13	All Below	0.008	--	0.0084	0.0061	0.0054	0.0085	0.005	0.005	0.0027	--
Oct 14	All Below	0.0023	--	0.003	0.0024	0.0049	0.0143	0.0079	0.0093	0.0157	--
Oct 16	All Below	0.0329	--	0.0335	0.0251	0.0307	0.0162	0.0125	0.0274	0.0276	--
Oct 17	All Below	0.0215	--	0.0226	0.012	0.0913	0.0173	0.0131	0.0099	0.0149	--
Oct 18	All Below	0.0117	--	0.011	0.0065	0.0088	0.0115	0.1137	0.0087	0.011	--
Oct 19	All Below	0.0092	--	0.0146	0.0091	0.0101	0.0097	0.017	0.0075	0.0201	--
Oct 20	All Below	0.0129	--	0.0165	0.0092	0.0123	0.0109	0.017	0.0095	0.0196	--
Oct 23	All Below	0.0112	--	0.015	0.006	0.008	0.0149	0.0136	0.0134	0.0272	--
Oct 24	All Below	0.0221	--	0.0253	0.0163	0.0191	0.0188	0.0327	0.0177	0.0269	--
Oct 25	All Below	0.0099	--	0.0114	0.0076	0.0093	0.0095	0.026	0.0083	0.0122	--
Oct 26	All Below	0.0099	--	0.005	0.004	0.0043	0.0096	0.012	0.0044	0.0063	--
Oct 27	All Below	0.0179	--	0.0405	0.0113	0.013	0.0204	0.0204	0.0164	0.0251	--
Oct 30	All Below	0.0157	--	0.0205	0.016	0.0124	0.0147	0.0158	0.0091	0.016	--
Oct 31	All Below	0.0209	--	0.0196	0.0208	0.0107	0.0157	0.0275	0.0165	0.0324	--

NA = Data not collected or recorded
 Particulates (milligrams per cubic meter)

2018 Air Volatile Organic Compound Data
(Corrective Action Level = 25 ppm above upwind location)

		Monitoring Station ID (see figure)									
Date	Action Level Check	UP-AIR1	UP-AIR2	UP-AIR3	UP-AIR4	UP-AIR5	SLF-AIR1	SLF-AIR2	SLF-AIR-PA	SA-AIR1	Notes
Oct 9	All Below	3.6217	--	0.1357	7.7126	0.163	0.0759	0.0277	1.421	0.1602	UP-AIR4 levels not related to field activities.
Oct 10	All Below	3.3289	--	0.1223	9.9145	0.1601	0.0438	0.0227	604.74	0.0585	UP-AIR4 levels not related to field activities.
Oct 11	All Below	2.0933	--	0.0497	12.455	0.038	0.0403	0.0473	6.4057	0.0359	UP-AIR4 levels not related to field activities.
Oct 12	All Below	0.5743	--	0.0034	2.0641	0.0177	0.0281	0.0301	7.9441	0.0466	--
Oct 13	All Below	0.0377	--	0.0129	0.0065	0.0187	0.0155	0.0426	6.8856	0.0341	--
Oct 14	All Below	0.1292	--	0.0084	0.0051	0.0032	0.0154	0.0511	0	0.2755	--
Oct 16	All Below	3.5797	--	0.0641	22.515	0.1715	0.0083	0.0263	0.2141	0.4857	UP-AIR4 levels not related to field activities.
Oct 17	All Below	3.0588	--	0.0623	0.0457	0.1702	0.0029	0.0004	0.0813	0.0468	--
Oct 18	All Below	1.213	--	0.028	0.0591	0.0343	0.0143	0.0313	0.0954	0.1664	--
Oct 19	All Below	1.1542	--	0.0283	0.0274	0.0443	0.0069	0.0311	0.0678	0.1036	--
Oct 20	All Below	0.5127	--	0.0004	0.5671	0.0283	0.0001	0.0692	0.0701	0	--

		Monitoring Station ID (see figure)									
Date	Action Level Check	UP-AIR1	UP-AIR2	UP-AIR3	UP-AIR4	UP-AIR5	SLF-AIR1	SLF-AIR2	SLF-AIR-PA	SA-AIR1	Notes
Oct 23	All Below	3.4831	--	0.0438	0.0225	0.1461	0.0016	0.0261	0.2283	0.2533	--
Oct 24	All Below	1.4578	--	0.0403	0.0292	0.1457	0.0147	0.0232	0.1645	0.0473	--
Oct 25	All Below	0.0495	--	0.0126	0.006	0.0165	0.0139	0.0165	0.046	0.0011	--
Oct 26	All Below	0.1763	--	0.0091	0.0003	0.0552	0.0135	0.0219	0.0254	0.0647	--
Oct 27	All Below	0.0509	--	0.0247	0.0021	0.0574	0.0831	0.0184	0.0407	0.0231	--
Oct 30	All Below	3.1127	--	0.062	8.3083	0.1529	0.0017	0.0081	0.9923	0.4005	UP-AIR4 levels not related to field activities.
Oct 31	All Below	0.2271	--	0.0422	0.0225	0.1523	0.0063	0.022	0.0327	0.0603	--

NA = Data not collected or recorded

Volatile Organic Compounds (VOCs parts per million)

2018 Air PCB Data

(Corrective Action Level = 0.100 microgram per cubic meter)

		Monitoring Station ID (see figure)									
Date	Action Level Check	UP-AIR1	UP-AIR2	UP-AIR3	UP-AIR4	UP-AIR5	SLF-AIR1	SLF-AIR2	SLF-AIR-PA	SA-AIR1	Notes
Oct 9	All Below	Below Detectable Levels	--	Below Detectable Levels	Below Detectable Levels	Below Detectable Levels	0.000380	0.000380	Below Detectable Levels	Below Detectable Levels	--
Oct 10	All Below	Below Detectable Levels	--	Below Detectable Levels	Below Detectable Levels	Below Detectable Levels	0.000380	0.000380	Below Detectable Levels	Below Detectable Levels	--
Oct 11	All Below	Below Detectable Levels	--	Below Detectable Levels	Below Detectable Levels	Below Detectable Levels	0.000630	0.001000	Below Detectable Levels	Below Detectable Levels	--
Oct 12	All Below	--	--	--	--	--	0.000380	0.000400	Below Detectable Levels	Below Detectable Levels	--

		Monitoring Station ID (see figure)									
Date	Action Level Check	UP-AIR1	UP-AIR2	UP-AIR3	UP-AIR4	UP-AIR5	SLF-AIR1	SLF-AIR2	SLF-AIR-PA	SA-AIR1	Notes
Oct 13	All Below	--	--	--	--	--	--	--	--	Below Detectable Levels	--
Oct 14	All Below	--	--	--	--	--	--	--	--	Below Detectable Levels	--
Oct 16	All Below	Below Detectable Levels	--	Below Detectable Levels	Below Detectable Levels	Below Detectable Levels	--	--	--	Below Detectable Levels	--
Oct 17	All Below	Below Detectable Levels	--	Below Detectable Levels	Below Detectable Levels	Below Detectable Levels	0.000140	0.000320	Below Detectable Levels	--	--
Oct 18	All Below	Below Detectable Levels	--	Below Detectable Levels	Below Detectable Levels	Below Detectable Levels	0.000140	0.000160	Below Detectable Levels	Below Detectable Levels	--
Oct 19	All Below	Below Detectable Levels	--	Below Detectable Levels	Below Detectable Levels	Below Detectable Levels	0.000072	0.000220	Below Detectable Levels	Below Detectable Levels	--
Oct 20	All Below	Below Detectable Levels	--	Below Detectable Levels	Below Detectable Levels	Below Detectable Levels	--	--	--	Below Detectable Levels	--
Oct 23	All Below	Below Detectable Levels	--	Below Detectable Levels	Below Detectable Levels	Below Detectable Levels	0.000210	0.000220	Below Detectable Levels	Below Detectable Levels	--
Oct 24	All Below	Below Detectable Levels	--	Below Detectable Levels	Below Detectable Levels	Below Detectable Levels	0.000220	0.000230	Below Detectable Levels	Below Detectable Levels	--
Oct 25	All Below	Below Detectable Levels	--	Below Detectable Levels	Below Detectable Levels	Below Detectable Levels	--	--	--	Below Detectable Levels	--

NA = Data not collected or recorded

Total PCBs (micrograms per cubic meter)

Air Monitoring - 2018 In-river Capping Test

Program includes particulate monitoring using real-time meters for particulates (or dust) as all material being handled is clean. Corrective action levels have been established based on levels that are safe for the community. The actual monitoring results are compared to the corrective action levels to determine if adjustments in construction are needed. The air monitoring locations and tabulated results are provided below.

Air Monitoring Locations



2018 Air Particulate Data

(Corrective Action Level = 0.150 milligram per cubic meter above upwind location)

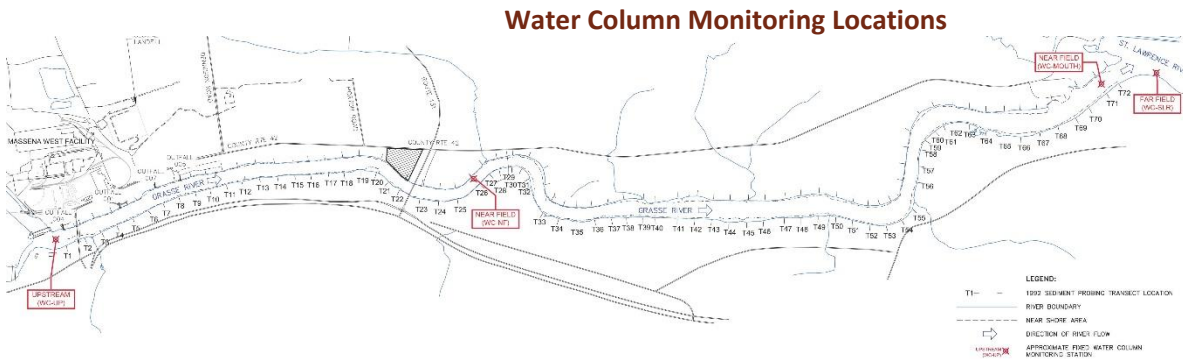
Date	Action Level Check	Monitoring Station ID (see figure)				Notes
		EP-AIR1	EP-AIR2	EP-AIR3	EP-AIR4	
Oct 21	All Below	0.0189	0.019	0.156	0.0064	--
Oct 23	All Below	0.0138	0.0171	0.0173	0.0874	--
Oct 24	All Below	0.0315	0.0272	0.0333	0.0617	--
Oct 25	All Below	0.01	0.1139	0.0389	0.0126	--
Oct 26	All Below	0.038	0.0643	0.0455	0.0419	--
Oct 27	All Below	0.0131	0.0359	0.016	0.0402	--
Oct 28	All Below	0.0145	0.0251	0.0215	0.0508	--
Oct 30	All Below	0.0095	0.0168	0.0131	0.0131	--

		Monitoring Station ID (see figure)				
Date	Action Level Check	EP-AIR1	EP-AIR2	EP-AIR3	EP-AIR4	Notes
Oct 31	All Below	0.0151	0.02532	0.0166	0.012	--

NA = Data not collected or recorded
 Particulates (milligrams per cubic meter)

Water Monitoring - 2018 In-river Capping Test

Program includes turbidity monitoring using real-time meters for solids and PCB analytical testing at water column and water intake locations. Corrective action levels have been established based on levels that are safe for the community for both turbidity and PCBs. The actual monitoring results will be compared to the corrective action levels to determine if adjustments in construction are needed. The water locations and tabulated results are provided below.



2018 Water Column Turbidity Data Corrective Action Level = 25 NTU above WC-UP Level

		Monitoring Station ID (see figure)							
Date	Action Level Check	WC-UP (0.5x)	WC-NF (0.2x)	WC-NF (0.8x)	WC-MOUTH (0.2x)	WC-MOUTH (0.8x)	WC-SLR (0.2x)	WC-SLR (0.8x)	Notes
Oct 20	All Below	1.5	3.1	3.4	4.9	5.2	0.5	0.3	--
Oct 22	All Below	0.1	3.5	4.1	1.5	3.0	0.4	0.7	--

		Monitoring Station ID (see figure)							
Date	Action Level Check	WC-UP (0.5x)	WC-NF (0.2x)	WC-NF (0.8x)	WC-MOUTH (0.2x)	WC-MOUTH (0.8x)	WC-SLR (0.2x)	WC-SLR (0.8x)	Notes
Oct 23	All Below	0.1	4.5	5.1	3.0	3.7	0.1	0.1	--
Oct 24	All Below	0.0	1.7	3.2	2.2	4.2	0.1	0.1	--
Oct 25	All Below	0.0	5.7	4.7	5.5	2.8	1.2	0.1	--
Oct 26	All Below	0.0	6.0	7.4	0.8	3.6	0.1	0.1	--
Oct 27	All Below	0.0	2.4	3.7	3.6	3.6	5.2	1.2	--
Oct 30	All Below	0.6	7.2	6.9	4.3	4.0	0.1	0.4	--

Turbidity (nephelometric turbidity unit; NTU)

2018 Water Column PCB Data

Corrective Action Level = 0.5 microgram per liter

		Monitoring Station ID (see figure)			
Date	Action Level Check	WC-NF	WC-MOUTH	WC-SLR	Notes
Oct 20	All Below	Below Detectable Levels	0.020000	Below Detectable Levels	--
Oct 23	All Below	Below Detectable Levels	0.020000	Below Detectable Levels	--
Oct 24	All Below	Below Detectable Levels	Below Detectable Levels	Below Detectable Levels	--
Oct 25	All Below	Below Detectable Levels	0.021000	Below Detectable Levels	--

		Monitoring Station ID (see figure)			
Date	Action Level Check	WC-NF	WC-MOUTH	WC-SLR	Notes
Oct 26	All Below	Below Detectable Levels	0.016000	Below Detectable Levels	--
Oct 27	All Below	Below Detectable Levels	0.013000	Below Detectable Levels	--

Total PCBs (micrograms per liter)

Water Intake Monitoring Locations



2018 Water Intake Turbidity Data (Corrective Action Level = 25 NTU above Baseline Level)

		Monitoring Station ID (see figure)			
Date	Action Level Check	IN-AE-RAW	IN-SRMT-RAW	IN-SRMT-FIL	Notes
Oct 20	All Below	1.0	0.9	0.6	--
Oct 22	All Below	0.9	1.1	0.4	--
Oct 23	All Below	0.7	1.2	0.7	--
Oct 24	All Below	1.2	1.1	0.6	--
Oct 25	All Below	0.7	0.8	0.6	--
Oct 26	All Below	0.6	0.7	0.4	--
Oct 27	All Below	0.8	1.0	0.5	--
Oct 30	All Below	0.5	0.7	0.5	--

NA = Data not collected or recorded
Turbidity (nephelometric turbidity unit; NTU)

2018 Water Intake PCB Data
(Corrective Action Level = 0.5 microgram per liter)

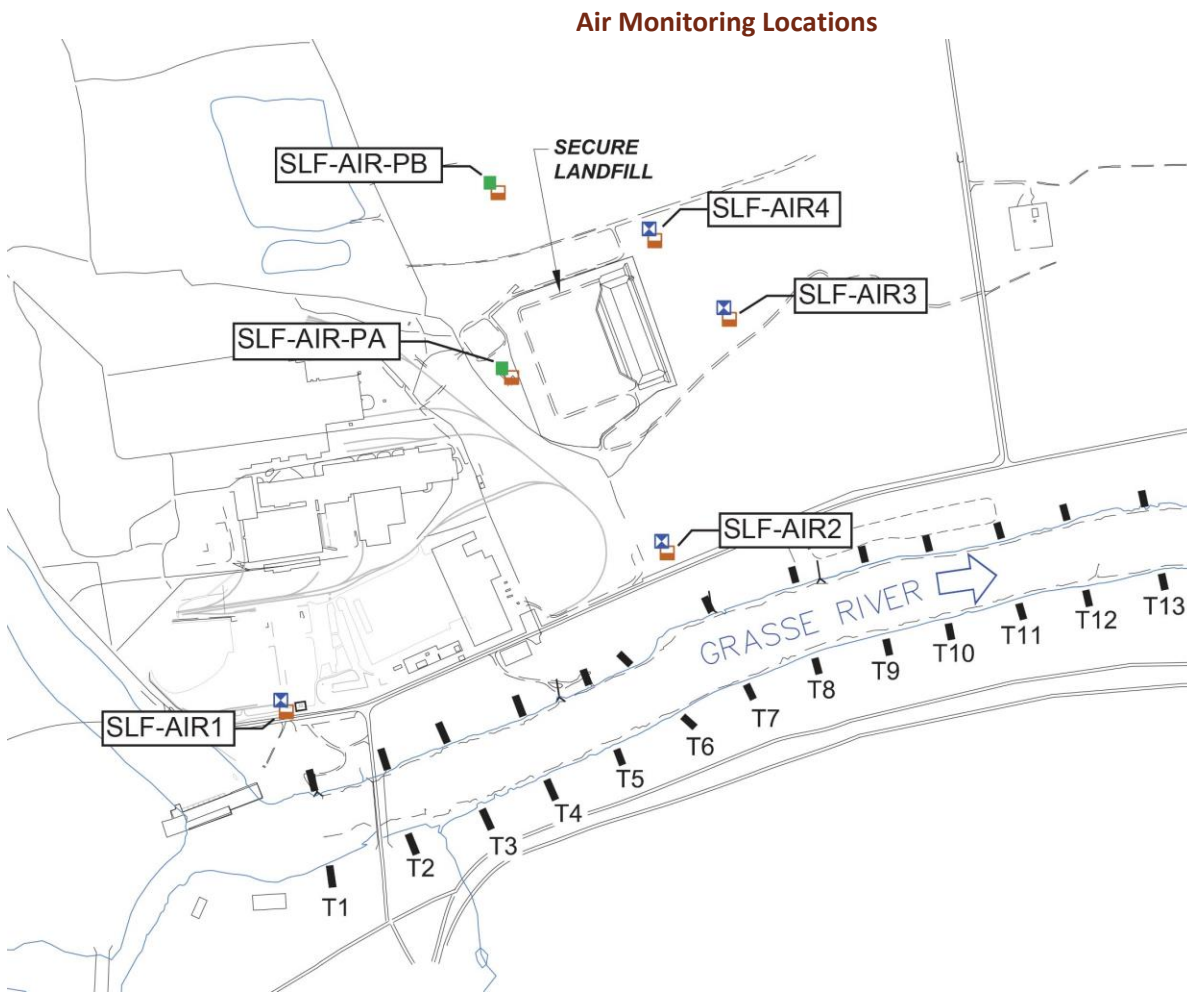
Date	Action Level Check	Monitoring Station ID (see figure)			Notes
		IN-AE-RAW	IN-SRMT-RAW	IN-SRMT-FIL	
Oct 20	All Below	Below Detectable Levels	Below Detectable Levels	Below Detectable Levels	--
Oct 23	All Below	Below Detectable Levels	Below Detectable Levels	0.016000	--
Oct 24	All Below	Below Detectable Levels	Below Detectable Levels	Below Detectable Levels	--
Oct 25	All Below	Below Detectable Levels	Below Detectable Levels	Below Detectable Levels	--
Oct 26	All Below	Below Detectable Levels	Below Detectable Levels	Below Detectable Levels	--
Oct 27	All Below	Below Detectable Levels	Below Detectable Levels	Below Detectable Levels	--

Total PCBs (micrograms per liter)

November 2018

Air Monitoring - 2018 Secure Landfill Construction and Operation

Program includes particulate monitoring using real-time meters for particulates (or dust) and volatile organic compounds (VOCs) and sampling for PCB analytical testing. Corrective action levels have been established based on levels that are safe for the community for particulates, VOCs, and PCBs. The actual monitoring results are compared to the corrective action levels to determine if adjustments in construction are needed. The air monitoring locations and tabulated results are provided below.



2018 Air Particulate Data

(Corrective Action Level = 0.150 milligram per cubic meter above upwind location)

		Monitoring Station ID (see figure)						
Date	Action Level Check	SLF-AIR1	SLF-AIR2	SLF-AIR3	SLF-AIR4	SLF-AIR-PA	SLF-AIR-PB	Notes
Nov 1	All Below	0.0199	0.0184	0.0355	0.0079	0.0163	0.0131	--
Nov 2	All Below	0.0296	0.0331	0.0514	0.011	0.0267	0.0237	--
Nov 3	All Below	0.0307	0.0421	0.0511	0.0093	0.0079	0.0135	--
Nov 4	All Below	0.0179	0.0205	0.0309	0.0032	--	--	--
Nov 5	All Below	0.0085	0.0191	0.011	0.005	--	--	--
Nov 6	All Below	0.016	0.0139	0.0285	0.0086	0.0131	0.009	--
Nov 7	All Below	0.0096	0.0119	0.0125	0.0041	0.0059	0.0097	--
Nov 8	All Below	0.0063	0.0149	0.0122	0.004	0.0172	0.007	--
Nov 9	All Below	0.0205	0.0217	0.0276	0.0051	0.0153	0.006	--
Nov 10	All Below	0.0238	0.0199	0.0218	0.007	0.0111	0.0149	--
Nov 11	All Below	0.0081	0.011	0.0127	0.0071	0.007	0.0095	--
Nov 12	All Below	0.0209	0.0198	0.0227	0.01	--	--	--
Nov 13	All Below	0.0235	0.0194	0.0375	0.0171	0.0201	0.017	--
Nov 14	All Below	0.0316	0.041	0.0511	0.017	0.0241	0.0259	--
Nov 15	All Below	0.0303	0.0406	0.0435	0.0239	0.0318	0.0059	--
Nov 16	All Below	0.0146	0.0193	0.0212	0.0085	0.0139	0.0225	--

		Monitoring Station ID (see figure)						
Date	Action Level Check	SLF-AIR1	SLF-AIR2	SLF-AIR3	SLF-AIR4	SLF-AIR-PA	SLF-AIR-PB	Notes
Nov 17	All Below	0.0439	0.0472	0.0718	0.0253	0.0393	0.0279	--
Nov 18	All Below	0.044	0.0478	0.0728	0.026	0.0397	0.018	--
Nov 19	All Below	0.0193	0.0186	0.0313	0.0135	--	--	--
Nov 20	All Below	0.0639	0.0823	0.0993	0.0311	0.0569	0.0273	--
Nov 21	All Below	0.0218	0.0295	0.0326	0.0144	0.0235	0.0273	--
Nov 22	All Below	0.0138	0.019	0.022	0.0112	0.0121	0.0139	--
Nov 23	All Below	0.0301	0.0308	0.0359	0.0323	--	--	--
Nov 24	All Below	0.0191	0.0181	0.0345	0.0089	--	--	--
Nov 25	All Below	0.026	0.0279	0.0429	0.016	--	--	--
Nov 26	All Below	0.0319	0.0364	0.0483	0.0171	--	--	--
Nov 27	All Below	0.0361	0.0464	0.0551	0.015	0.0279	0.0358	--
Nov 28	All Below	0.0112	0.0114	0.0143	0.004	0.0086	0.013	--
Nov 29	All Below	0.0066	0.0101	0.0172	0.0058	0.0081	0.0089	--
Nov 30	All Below	0.0073	0.0071	0.0099	0.0038	0.005	0.0077	--

NA = Data not collected

Particulates (milligrams per cubic meter)

2018 Air Volatile Organic Compound Data
(Corrective Action Level = 25 ppm above upwind location)

		Monitoring Station ID (see figure)						
Date	Action Level Check	SLF-AIR1	SLF-AIR2	SLF-AIR3	SLF-AIR4	SLF-AIR-PA	SLF-AIR-PB	Notes
Nov 1	All Below	0.0012	0.0093	0.0309	0.0013	0.0437	0.1755	--
Nov 2	All Below	0.0029	0.0044	0.0207	0.0013	0.0495	0.2514	--
Nov 3	All Below	0.0002	0.0054	0.0067	0.0045	0.0007	0.1333	--
Nov 4	All Below	0	0.004	0.0059	0.0604	--	--	--
Nov 5	All Below	0.0006	0.0089	0.0001	0.0484	--	--	--
Nov 6	All Below	0.0217	0.0015	0.0199	0.0017	0.4349	0.2597	--
Nov 7	All Below	0.0199	0.0021	0.0213	0.0009	0.0897	0.1467	--
Nov 8	All Below	0.013	0.0247	0.0242	0.0752	0.0546	0.1989	--
Nov 9	All Below	0.0076	0.0231	0.0127	0.0485	0.0901	0.1893	--
Nov 10	All Below	0.001	0.0137	0.0378	0.0017	0.0501	0.2509	--
Nov 11	All Below	0.0057	0.0062	0.037	0.0212	0	0.1563	--
Nov 12	All Below	0.0022	0.0139	0.0154	0.0172	--	--	--
Nov 13	All Below	0.0054	0.0019	0.0351	0	0.5667	0.2433	--
Nov 14	All Below	0	0.0297	0.023	0.0333	0.104	0.1313	--
Nov 15	All Below	0.0053	0.0255	0.0365	0.0973	0.0414	0.1765	--
Nov 16	All Below	0.009	0.0119	0.0361	0.0048	0.0705	0.3771	--

		Monitoring Station ID (see figure)						
Date	Action Level Check	SLF-AIR1	SLF-AIR2	SLF-AIR3	SLF-AIR4	SLF-AIR-PA	SLF-AIR-PB	Notes
Nov 17	All Below	0.0139	0	0.0595	0	0.0929	0.245	--
Nov 18	All Below	0.0079	0.0121	0.0959	0.0905	0.0717	0.1422	--
Nov 19	All Below	0.0042	0.0143	0.1323	0.0402	--	--	--
Nov 20	All Below	0.0079	0.0052	0.0448	0.0446	1.575	0.3066	--
Nov 21	All Below	0.0079	0.0168	0.0481	0.0248	0.0222	0.2785	--
Nov 22	All Below	0.0099	0.037	0.0605	0.1609	0.0426	0.2635	--
Nov 23	All Below	0	0.0256	0.1301	0.3	--	--	--
Nov 24	All Below	0.0142	16.337	4.9372	0.0261	--	--	SLF-AIR2 levels not related to field activities.
Nov 25	All Below	0.0147	0.0659	11.003	0.0156	--	--	SLF-AIR3 levels not related to field activities.
Nov 26	All Below	0	0.0713	8.1719	0.0617	--	--	SLF-AIR3 levels not related to field activities.
Nov 27	All Below	0.0033	0.0249	0.0062	0.1124	1.3085	0.2875	--
Nov 28	All Below	0.0027	0.0152	0.00612	0.0754	0.0221	6.0464	--
Nov 29	All Below	0	0.0042	0.0049	0.0989	0.0002	5.7069	--

		Monitoring Station ID (see figure)						
Date	Action Level Check	SLF-AIR1	SLF-AIR2	SLF-AIR3	SLF-AIR4	SLF-AIR-PA	SLF-AIR-PB	Notes
Nov 30	All Below	0.0001	0.0065	0.0927	0.0681	0.0267	6.0609	--

NA = Data not collected

Volatile Organic Compounds (VOCs parts per million)

2018 Air PCB Data

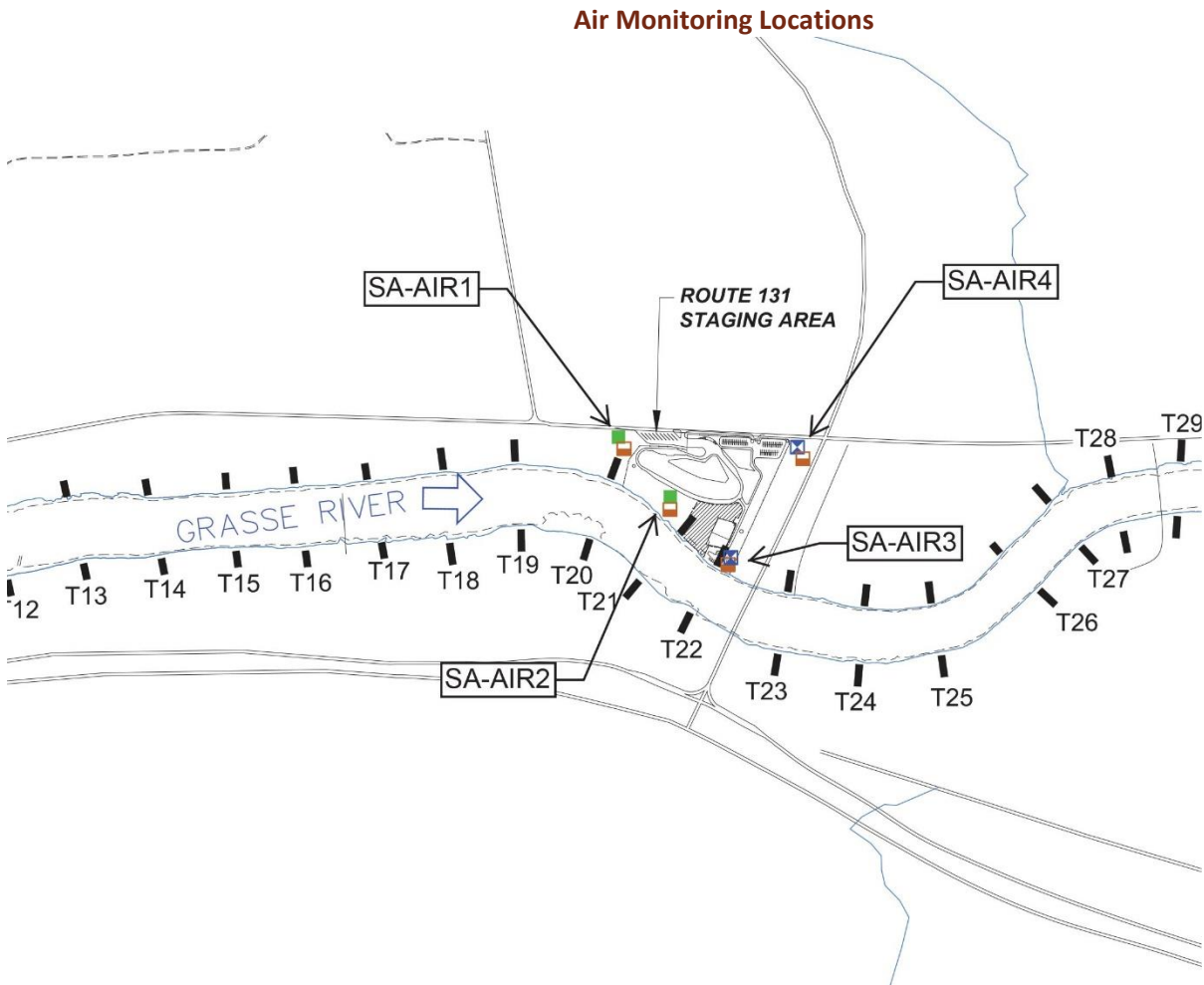
		Monitoring Station ID (see figure)						
Date	Action Level Check	SLF-AIR1	SLF-AIR2	SLF-AIR3	SLF-AIR4	SLF-AIR-PA	SLF-AIR-PB	Notes
Nov 1	All Below	0.000490	0.000610	0.000620	0.000370	Below Detectable Levels	Below Detectable Levels	--
Nov 6	All Below	--	--	--	--	Below Detectable Levels	--	--
Nov 7	All Below	0.000230	0.000550	0.006700	0.001600	Below Detectable Levels	Below Detectable Levels	--
Nov 8	All Below	0.000071	0.000260	0.005200	0.000250	Below Detectable Levels	--	--
Nov 9	All Below	0.000160	0.000130	0.000690	0.000730	Below Detectable Levels	--	--
Nov 13	All Below	0.000250	0.000190	0.004200	0.002800	Below Detectable Levels	--	--
Nov 14	All Below	0.000220	0.000430	0.000180	0.000710	Below Detectable Levels	--	--
Nov 15	All Below	Below Detectable Levels	Below Detectable Levels	Below Detectable Levels	0.000260	Below Detectable Levels	--	--

		Monitoring Station ID (see figure)						
Date	Action Level Check	SLF-AIR1	SLF-AIR2	SLF-AIR3	SLF-AIR4	SLF-AIR-PA	SLF-AIR-PB	Notes
Nov 16	All Below	0.000280	0.000120	0.000270	0.000140	Below Detectable Levels	--	--
Nov 17	All Below	Below Detectable Levels0	Below Detectable Levels	0.000380	--	Below Detectable Levels	--	--
Nov 18	All Below	Below Detectable Levels	Below Detectable Levels	0.000240	0.000140	Below Detectable Levels	--	--
Nov 19	All Below	0.000180	Below Detectable Levels	0.000480	0.000510	--	--	--
Nov 20	All Below	0.000130	0.000220	0.000730	0.000310	Below Detectable Levels	--	--
Nov 21	All Below	0.000250	0.000280	0.000370	0.000370	Below Detectable Levels	--	--
Nov 22	All Below	0.000029	0.000055	0.000079	0.000069	--	--	--
Nov 23	All Below	0.000034	0.000230	0.000240	0.000150	Below Detectable Levels	--	--
Nov 24	All Below	Below Detectable Levels	Below Detectable Levels	Below Detectable Levels	0.000390	--	--	--
Nov 25	All Below	0.000270	0.000350	0.000510	0.000300	--	--	--
Nov 26	All Below	0.000820	0.000280	0.002100	0.001000	--	--	--
Nov 27	All Below	0.000340	0.000400	0.000680	0.000490	Below Detectable Levels	--	--
Nov 29	All Below	0.000097	0.000220	0.000120	0.000280	Below Detectable Levels	--	--

NA = Analysis not required
Total PCBs (micrograms per cubic meter)

Air Monitoring - 2018 Route 131 Staging Area Construction

Program includes particulate monitoring using real-time meters for particulates (or dust) and volatile organic compounds (VOCs) and sampling for PCB analytical testing. Corrective action levels have been established based on levels that are safe for the community for particulates, VOCs, and PCBs. The actual monitoring results are compared to the corrective action levels to determine if adjustments in construction are needed. The air monitoring locations and tabulated results are provided below.



2018 Air Particulate Data

(Corrective Action Level = 0.150 milligram per cubic meter above upwind location)

		Monitoring Station ID (see figure)				
Date	Action Level Check	SA-AIR1	SA-AIR2	SA-AIR3	SA-AIR4	Notes
Monitoring activities not conducted at this location in November 2018.						

NA = Data not collected or recorded

Particulates (milligrams per cubic meter)

2018 Air Volatile Organic Compound Data

(Corrective Action Level = 25 ppm above upwind location)

		Monitoring Station ID (see figure)				
Date	Action Level Check	SA-AIR1	SA-AIR2	SA-AIR3	SA-AIR4	Notes
Monitoring activities not conducted at this location in November 2018.						

NA = Data not collected or recorded

Volatile Organic Compounds (VOCs parts per million)

2018 Air PCB Data

(Corrective Action Level = 0.100 microgram per cubic meter)

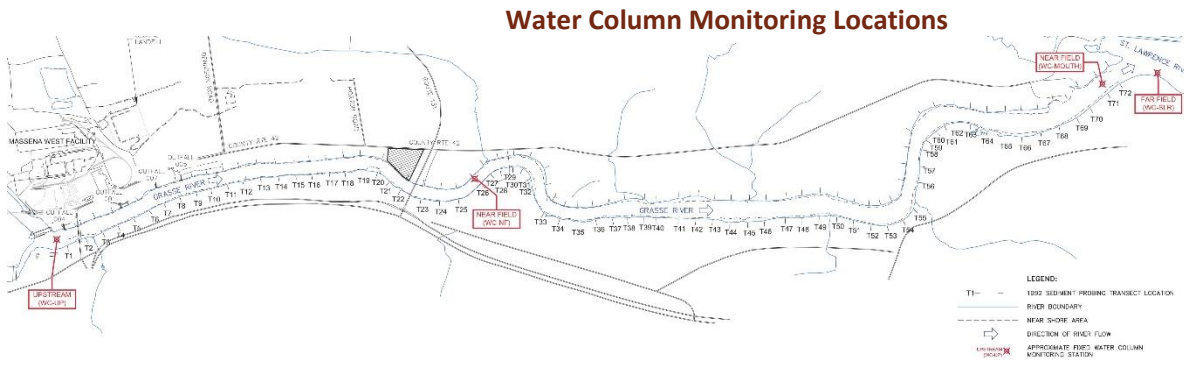
		Monitoring Station ID (see figure)				
Date	Action Level Check	SA-AIR1	SA-AIR2	SA-AIR3	SA-AIR4	Notes
Monitoring activities not conducted at this location in November 2018.						

NA = Data not collected or recorded

Total PCBs (micrograms per cubic meter)

Water Monitoring - 2018 Route 131 Staging Area Construction

Program includes turbidity monitoring using real-time meters for solids and PCB analytical testing at water column and water intake locations. Corrective action levels have been established based on levels that are safe for the community for both turbidity and PCBs. The actual monitoring results will be compared to the corrective action levels to determine if adjustments in construction are needed. The water locations and tabulated results are provided below.



2018 Water Column Turbidity Data (Corrective Action Level = 25 NTU above WC-UP Level)

		Monitoring Station ID (see figure)							
Date	Action Level Check	WC-UP (0.5x)	WC-NF (0.2x)	WC-NF (0.8x)	WC-MOUTH H (0.2x)	WC-MOUTH (0.8x)	WC-SLR (0.2x)	WC-SLR (0.8x)	Notes
Monitoring activities not conducted at this location in November 2018.									

Turbidity (nephelometric turbidity unit; NTU)

2018 Water Column PCB Data (Corrective Action Level = 0.5 microgram per liter)

		Monitoring Station ID (see figure)			
Date	Action Level Check	WC-NF	WC-MOUTH	WC-SLR	Notes
Monitoring activities not conducted at this location in November 2018.					

Total PCBs (micrograms per liter)

Water Intake Monitoring Locations



2018 Water Intake Turbidity Data (Corrective Action Level = 25 NTU above Baseline Level)

		Monitoring Station ID (see figure)			
Date	Action Level Check	IN-AE-RAW	IN-SRMT-RAW	IN-SRMT-FIL	Notes
Monitoring activities not conducted at this location in November 2018.					

NA = Data not collected or recorded
Turbidity (nephelometric turbidity unit; NTU)

2018 Water Intake PCB Data (Corrective Action Level = 0.5 microgram per liter)

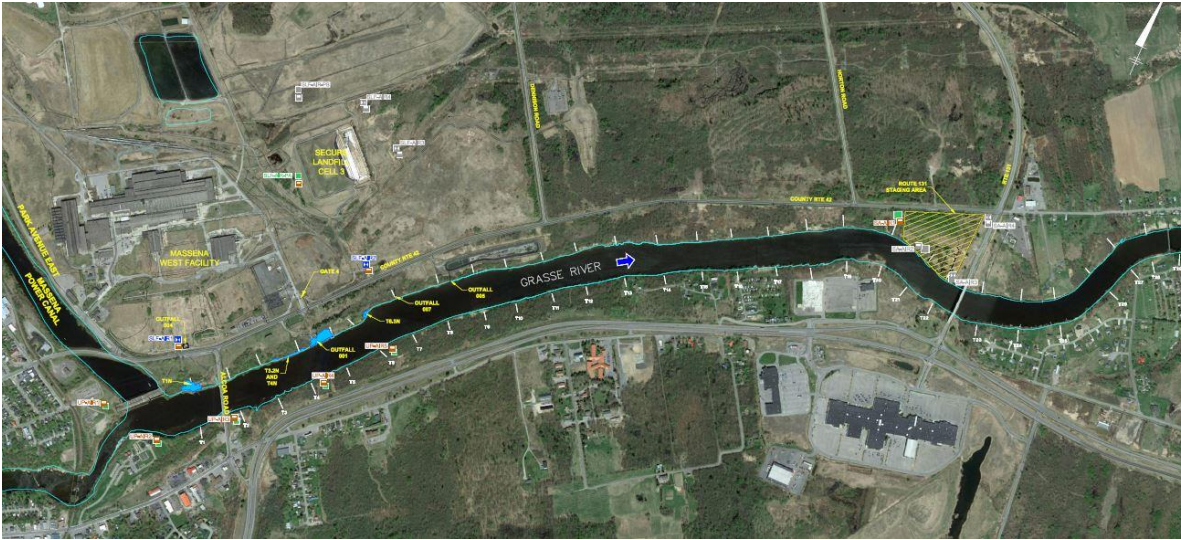
		Monitoring Station ID (see figure)			
Date	Action Level Check	IN-AE-RAW	IN-SRMT-RAW	IN-SRMT-FIL	Notes
Monitoring activities not conducted at this location in November 2018.					

Total PCBs (micrograms per liter)

Air Monitoring - 2018 Soil Removal Areas Along the North Shore

Program includes particulate monitoring using real-time meters for particulates (or dust) and volatile organic compounds (VOCs) and sampling for PCB analytical testing. Corrective action levels have been established based on levels that are safe for the community for particulates, VOCs, and PCBs. The actual monitoring results are compared to the corrective action levels to determine if adjustments in construction are needed. The air monitoring locations and tabulated results are provided below.

Air Monitoring Locations



2018 Air Particulate Data (Corrective Action Level = 0.150 milligram per cubic meter above upwind location)

Date	Action Level Check	Monitoring Station ID (see figure)									Notes
		UP-AIR1	UP-AIR2	UP-AIR3	UP-AIR4	UP-AIR5	SLF-AIR1	SLF-AIR2	SLF-AIRPA	SA-AIR1	
Nov 1	All Below	0.0213	--	0.0168	0.0147	0.0248	0.0199	0.0184	0.0163	0.0245	--
Nov 2	All Below	0.0333	--	0.0279	0.0251	0.027	0.0296	0.0331	0.0267	0.0424	--
Nov 3	All Below	0.0119	--	0.0133	0.0119	0.013	0.037	0.0421	0.0079	0.0161	--
Nov 6	All Below	0.0181	--	0.0205	0.0089	0.0095	0.016	0.0139	0.0131	0.0196	--
Nov 7	All Below	0.0091	--	0.0096	0.0067	0.0063	0.0096	0.0119	0.0059	0.0085	--

		Monitoring Station ID (see figure)									
Date	Action Level Check	UP-AIR1	UP-AIR2	UP-AIR3	UP-AIR4	UP-AIR5	SLF-AIR1	SLF-AIR2	SLF-AIRPA	SA-AIR1	Notes
Nov 8	All Below	0.007	--	0.0073	0.006	0.0058	0.0063	0.0149	0.0172	0.0065	--
Nov 9	All Below	0.0133	--	0.0255	0.0145	0.0093	0.0205	0.0217	0.0153	0.021	--
Nov 10	All Below	0.0213	--	0.0391	0.0103	0.0116	0.0238	0.0199	0.0111	0.0211	--
Nov 11	All Below	0.0101	--	0.0115	0.0071	0.0065	0.0081	0.011	0.007	0.01	--
Nov 13	All Below	0.0219	--	0.0293	0.0139	0.0196	0.0235	0.0194	0.0201	0.0292	--
Nov 14	All Below	0.0362	--	0.0389	0.0274	0.0283	0.0316	0.041	0.0241	0.0337	--
Nov 15	All Below	0.034	--	0.0363	0.0222	0.0203	0.0303	0.0406	0.0318	0.0326	--
Nov 16	All Below	0.0213	--	0.014	0.0155	0.0126	0.0146	0.0193	0.0139	0.0201	--
Nov 17	All Below	0.0509	--	0.0311	0.0376	0.0389	0.0439	0.0472	0.0393	0.0584	--
Nov 18	All Below	0.0517	--	0.015	0.0379	0.039	0.044	0.0478	0.0397	0.0594	--
Nov 20	All Below	0.0742	--	0.0793	0.0543	0.0533	0.0639	0.0823	0.0569	0.0819	--
Nov 21	All Below	0.0239	--	0.0283	0.0169	0.0143	0.0218	0.0295	0.0235	0.0234	--
Nov 22	All Below	0.0128	--	0.0144	0.0117	0.0079	0.038	0.019	0.0121	0.0127	--
Nov 23	All Below	--	--	--	--	--	0.0301	0.0348	--	--	--
Nov 27	All Below	0.0388	--	0.0809	0.0626	0.0647	0.0361	0.0464	0.0279	0.0475	--
Nov 28	All Below	0.0122	--	0.0133	0.0088	0.0085	0.0112	0.0114	0.0086	0.0123	--
Nov 29	All Below	0.0107	--	0.0061	0.0065	0.0075	0.0066	0.0101	0.0081	0.0098	--
Nov 30	All Below	0.0092	--	0.005	0.0056	0.0059	0.0073	0.0071	0.005	0.0168	--

NA = Data not collected or recorded
 Particulates (milligrams per cubic meter)

2018 Air Volatile Organic Compound Data
(Corrective Action Level = 25 ppm above upwind location)

		Monitoring Station ID (see figure)									
Date	Action Level Check	UP-AIR1	UP-AIR2	UP-AIR3	UP-AIR4	UP-AIR5	SLF-AIR1	SLF-AIR2	SLF-AIR-PA	SA-AIR1	Notes
Nov 1	All Below	0.0107	--	0.0043	0.1155	0.0095	0.0012	0.0093	0.0437	0	--
Nov 2	All Below	0	--	0.0071	0.1618	0.0134	0.0029	0.0044	0.0495	0.0002	--
Nov 3	All Below	0	--	0.0013	0	0.0069	0.0002	0.0054	0.0007	0	--
Nov 6	All Below	0	--	0.0267	0.7109	0.1315	0.0217	0.0015	0.4349	0.065	--
Nov 7	All Below	0	--	0.0263	1.1661	0.1307	0.0199	0.0021	0.0897	0.001	--
Nov 8	All Below	0.0747	--	0.0145	0.0001	0.0295	0.013	0.0247	0.0546	0.0233	--
Nov 9	All Below	0.2246	--	0.0199	0.0032	0.0287	0.0076	0.0231	0.0901	0.0971	--
Nov 10	All Below	0.1186	--	0.0173	0.0925	0.0013	0.001	0.0137	0.0501	0.0002	--
Nov 11	All Below	0.1984	--	0	0	0.023	0.0057	0.0062	0	0	--
Nov 13	All Below	0.0659	--	0.0478	0.0416	0.1377	0.0054	0.0019	0.5667	0.0373	--
Nov 14	All Below	0.3185	--	0.0499	0.0417	0.1395	0	0.0297	0.104	0.035	--
Nov 15	All Below	0.4519	--	0.026	0.0011	0.0226	0.0053	0.0255	0.0414	0.1717	--
Nov 16	All Below	0.0049	--	0.012	0.0186	0	0.009	0.0119	0.0705	0.1055	--
Nov 17	All Below	0.0049	--	0	0.0488	0.0003	0.0139	0	0.0929	0.0167	--
Nov 18	All Below	0	--	0	0.0407	0	0.0079	0.0121	0.0717	0.0055	--
Nov 20	All Below	0	--	0.0721	0.874	0.1261	0.0079	0.0052	1.575	0.2455	--
Nov 21	All Below	0	--	0.0222	0.0004	0.1245	0.00979	0.0168	0.0222	0.0829	--
Nov 22	All Below	0	--	0.0051	0.0149	0	0.0099	0.037	0.0426	0.0839	--
Nov 23	All Below	--	--	--	--	--	0	0.0256	--	--	--

		Monitoring Station ID (see figure)									
Date	Action Level Check	UP-AIR1	UP-AIR2	UP-AIR3	UP-AIR4	UP-AIR5	SLF-AIR1	SLF-AIR2	SLF-AIR-PA	SA-AIR1	Notes
Nov 27	All Below	2.6951	--	0.051	19.906	0.1417	0.0033	0.0249	1.3085	0.6225	UP-AIR4 levels not related to field activities.
Nov 28	All Below	0.0392	--	0.0009	5.477	0.1405	0.0027	0.0152	0.0221	0.0443	UP-AIR4 levels not related to field activities.
Nov 29	All Below	0.0592	--	0.0019	0.229	0.0074	0	0.0042	0.0002	0.0475	--
Nov 30	All Below	0.0059	--	0.0049	0.0271	0.0028	0.0001	0.0065	0.0267	0.1861	--

NA = Data not collected or recorded

Volatile Organic Compounds (VOCs parts per million)

[Return to top](#)

2018 Air PCB Data

(Corrective Action Level = 0.100 microgram per cubic meter)

[View Recent Data](#)

		Monitoring Station ID (see figure)									
Date	Action Level Check	UP-AIR1	UP-AIR2	UP-AIR3	UP-AIR4	UP-AIR5	SLF-AIR1	SLF-AIR2	SLF-AIR-PA	SA-AIR1	Notes
Nov 1	All Below	Below Detectable Levels	--	Below Detectable Levels	Below Detectable Levels	Below Detectable Levels	0.000490	0.000610	Below Detectable Levels	Below Detectable Levels	--
Nov 2	All Below	Below Detectable Levels	--	Below Detectable Levels	Below Detectable Levels	Below Detectable Levels	0.000220	0.000600	Below Detectable Levels	Below Detectable Levels	--
Nov 3	All Below	Below Detectable Levels	--	Below Detectable Levels	Below Detectable Levels	Below Detectable Levels	0.000460	0.000950	Below Detectable Levels	Below Detectable Levels	--

		Monitoring Station ID (see figure)									
Date	Action Level Check	UP-AIR1	UP-AIR2	UP-AIR3	UP-AIR4	UP-AIR5	SLF-AIR1	SLF-AIR2	SLF-AIR-PA	SA-AIR1	Notes
Nov 20	All Below	Below Detectable Levels	--	Below Detectable Levels	Below Detectable Levels	Below Detectable Levels	0.000130	0.000220	Below Detectable Levels	Below Detectable Levels	--
Nov 21	All Below	Below Detectable Levels	--	Below Detectable Levels	Below Detectable Levels	Below Detectable Levels	0.000250	0.000280	Below Detectable Levels	Below Detectable Levels	--
Nov 22	All Below	Below Detectable Levels	--	Below Detectable Levels	Below Detectable Levels	Below Detectable Levels	0.000034	0.000230	Below Detectable Levels	Below Detectable Levels	--
Nov 27	All Below	Below Detectable Levels	--	Below Detectable Levels	Below Detectable Levels	Below Detectable Levels	0.000340	0.000400	Below Detectable Levels	Below Detectable Levels	--
Nov 28	All Below	Below Detectable Levels	--	Below Detectable Levels	Below Detectable Levels	Below Detectable Levels	--	--	--	Below Detectable Levels	--
Nov 29	All Below	--	--	--	--	--	0.000097	0.000220	Below Detectable Levels	Below Detectable Levels	--
Nov 30	All Below	Below Detectable Levels	--	Below Detectable Levels	Below Detectable Levels	Below Detectable Levels	--	--	--	Below Detectable Levels	--

NA = Data not collected or recorded

Total PCBs (micrograms per cubic meter)

Air Monitoring - 2018 In-river Capping Test

Program includes particulate monitoring using real-time meters for particulates (or dust) as all material being handled is clean. Corrective action levels have been established based on levels that are safe for the community. The actual monitoring results are compared to the corrective action levels to determine if adjustments in construction are needed. The air monitoring locations and tabulated results are provided below.

Air Monitoring Locations



2018 Air Particulate Data

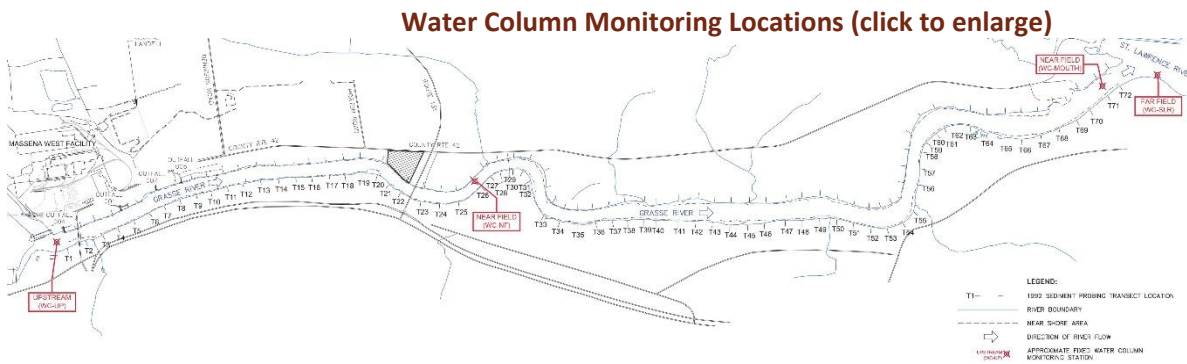
(Corrective Action Level = 0.150 milligram per cubic meter above upwind location)

Date	Action Level Check	Monitoring Station ID (see figure)				Notes
		EP-AIR1	EP-AIR2	EP-AIR3	EP-AIR4	
Nov 27	All Below	0.0457	0.031	0.062	0.058	--
Nov 28	All Below	0.0127	0.0122	0.0122	0.0145	--
Nov 29	All Below	0.0095	0.0086	0.0073	0.0074	--
Nov 30	All Below	0.0129	0.0121	0.0085	0.0113	--

NA = Data not collected or recorded
 Particulates (milligrams per cubic meter)

Water Monitoring - 2018 In-river Capping Test

Program includes turbidity monitoring using real-time meters for solids and PCB analytical testing at water column and water intake locations. Corrective action levels have been established based on levels that are safe for the community for both turbidity and PCBs. The actual monitoring results will be compared to the corrective action levels to determine if adjustments in construction are needed. The water locations and tabulated results are provided below.



2018 Water Column Turbidity Data Corrective Action Level = 25 NTU above WC-UP Level

Date	Action Level Check	Monitoring Station ID (see figure)							Notes
		WC-UP (0.5x)	WC-NF (0.2x)	WC-NF (0.8x)	WC-MOUTH (0.2x)	WC-MOUTH (0.8x)	WC-SLR (0.2x)	WC-SLR (0.8x)	
Nov 27	All below	3.5	0.9	1.2	0.4	0.8	1.9	2.5	--
Nov 28	All below	3.7	6.1	5.3	8.1	5.4	2.6	0.9	--
Nov 29	All below	3.2	6.7	10.1	5.2	5.3	4.5	2.4	--
Nov 30	All below	11.1	5.7	5.5	6.2	6.5	5.3	2.6	--

Turbidity (nephelometric turbidity unit; NTU)

2018 Water Column PCB Data
Corrective Action Level = 0.5 microgram per liter

Date	Action Level Check	Monitoring Station ID (see figure)			Notes
		WC-NF	WC-MOUTH	WC-SLR	
Nov 27	All below	0.6	3.1	0.4	--
Nov 28	All below	0.7	1.6	0.7	--
Nov 29	All below	0.7	0.9	0.5	--
Nov 30	All below	0.6	0.7	0.4	--

Total PCBs (micrograms per liter)

Water Intake Monitoring Locations



2018 Water Intake Turbidity Data
(Corrective Action Level = 25 NTU above Baseline Level)

Date	Action Level Check	Monitoring Station ID (see figure)			Notes
		IN-AE-RAW	IN-SRMT-RAW	IN-SRMT-FIL	
Monitoring activities not conducted at this location in November 2018.					

NA = Data not collected or recorded
Turbidity (nephelometric turbidity unit; NTU)

2018 Water Intake PCB Data
(Corrective Action Level = 0.5 microgram per liter)

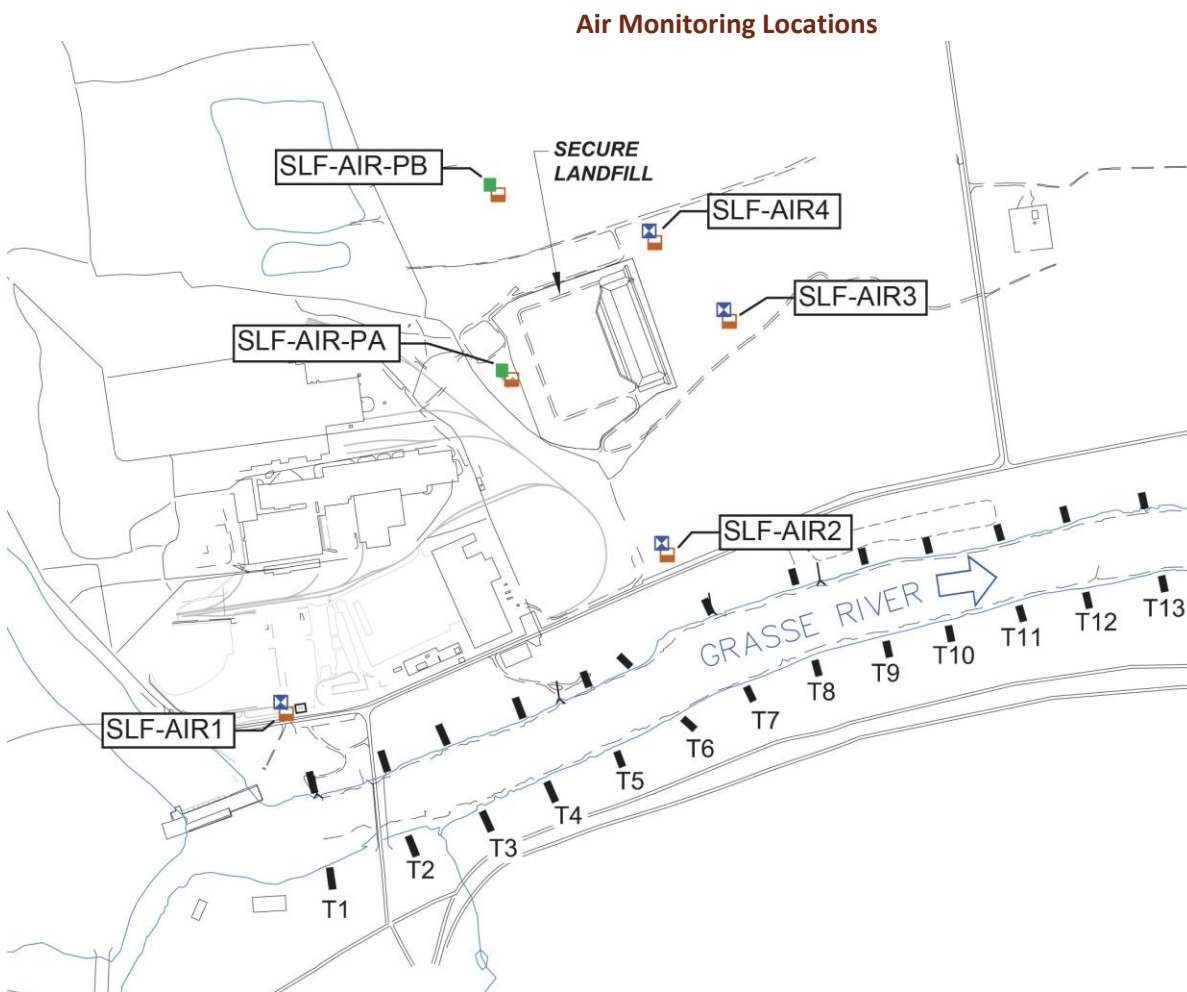
		Monitoring Station ID (see figure)			
Date	Action Level Check	IN-AE-RAW	IN-SRMT-RAW	IN-SRMT-FIL	Notes
Monitoring activities not conducted at this location in November 2018.					

Total PCBs (micrograms per liter)

December 2018

Air Monitoring - 2018 Secure Landfill Construction and Operation

Program includes particulate monitoring using real-time meters for particulates (or dust) and volatile organic compounds (VOCs) and sampling for PCB analytical testing. Corrective action levels have been established based on levels that are safe for the community for particulates, VOCs, and PCBs. The actual monitoring results are compared to the corrective action levels to determine if adjustments in construction are needed. The air monitoring locations and tabulated results are provided below.



2018 Air Particulate Data

(Corrective Action Level = 0.150 milligram per cubic meter above upwind location)

		Monitoring Station ID (see figure)						
Date	Action Level Check	SLF-AIR1	SLF-AIR2	SLF-AIR3	SLF-AIR4	SLF-AIR-PA	SLF-AIR-PB	Notes
Dec 1	All Below	0.0119	0.0141	0.0151	0.006	0.01	0.0061	--
Dec 2	All Below	0.019	0.0261	0.0303	0.0096	--	--	--
Dec 3	All Below	0.0323	0.0428	0.0541	0.004	--	--	--
Dec 4	All Below	0.0102	0.0199	0.0117	0.0051	0.0141	0.0107	--
Dec 5	All Below	0.02	0.0201	0.0214	0.007	0.0135	0.007	--
Dec 6	All Below	0.0537	0.0961	0.0839	0.0293	0.0537	0.0219	--
Dec 7	All Below	0.0393	0.0466	0.0519	0.0196	--	--	--
Dec 8	All Below	0.0323	0.0477	0.0446	0.0161	--	--	--
Dec 9	All Below	0.0477	0.0614	0.0701	0.025	--	--	--
Dec 10	All Below	0.0268	0.027	0.0397	0.016	--	--	--
Dec 11	All Below	0.0347	0.0463	0.0437	0.01	--	--	--
Dec 12	All Below	0.0715	0.0961	0.1103	0.0325	0.0617	0.0857	--
Dec 13	All Below	0.0779	0.0807	0.1056	0.0295	0.0714	0.0857	--
Dec 14	All Below	0.049	0.0655	0.0728	0.0189	0.0417	0.039	--

NA = Data not collected

Particulates (milligrams per cubic meter)

2018 Air Volatile Organic Compound Data
(Corrective Action Level = 25 ppm above upwind location)

		Monitoring Station ID (see figure)						
Date	Action Level Check	SLF-AIR1	SLF-AIR2	SLF-AIR3	SLF-AIR4	SLF-AIR-PA	SLF-AIR-PB	Notes
Dec 1	All Below	0.0193	0.0015	0.0103	0.088	0.0493	0	--
Dec 2	All Below	0.0571	0.0045	0.0088	0.3053	--	--	--
Dec 3	All Below	0.127	0.0059	0.0256	0.4178	--	--	--
Dec 4	All Below	0.1032	0.0131	0.0265	0.2527	0.6306	4.1044	--
Dec 5	All Below	0.0455	0.0155	0.0281	0.5907	0.1126	0	--
Dec 6	All Below	5.433	0.0309	0.0695	0.3293	0.0307	0.07	--
Dec 7	All Below	4.7299	0.0107	0.0093	0.3175	--	--	--
Dec 8	All Below	3.4843	0.0211	0.0937	0	--	--	--
Dec 9	All Below	0	0	0.0613	0.6945	--	--	--
Dec 10	All Below	0.0289	0.0038	0.0164	0.076	--	--	--
Dec 11	All Below	0.055	0.0048	0.056	0.3893	--	--	--
Dec 12	All Below	0.03	0.0171	0.0549	0.0313	0.1485	0.0918	--
Dec 13	All Below	0.0369	0.0019	0.0049	0.7755	0.2069	0.1205	--
Dec 14	All Below	0.0645	0	0.005	0.0806	0.1527	0.0987	--

NA = Data not collected

Volatile Organic Compounds (VOCs parts per million)

2018 Air PCB Data

(Corrective Action Level = 0.100 microgram per cubic meter)

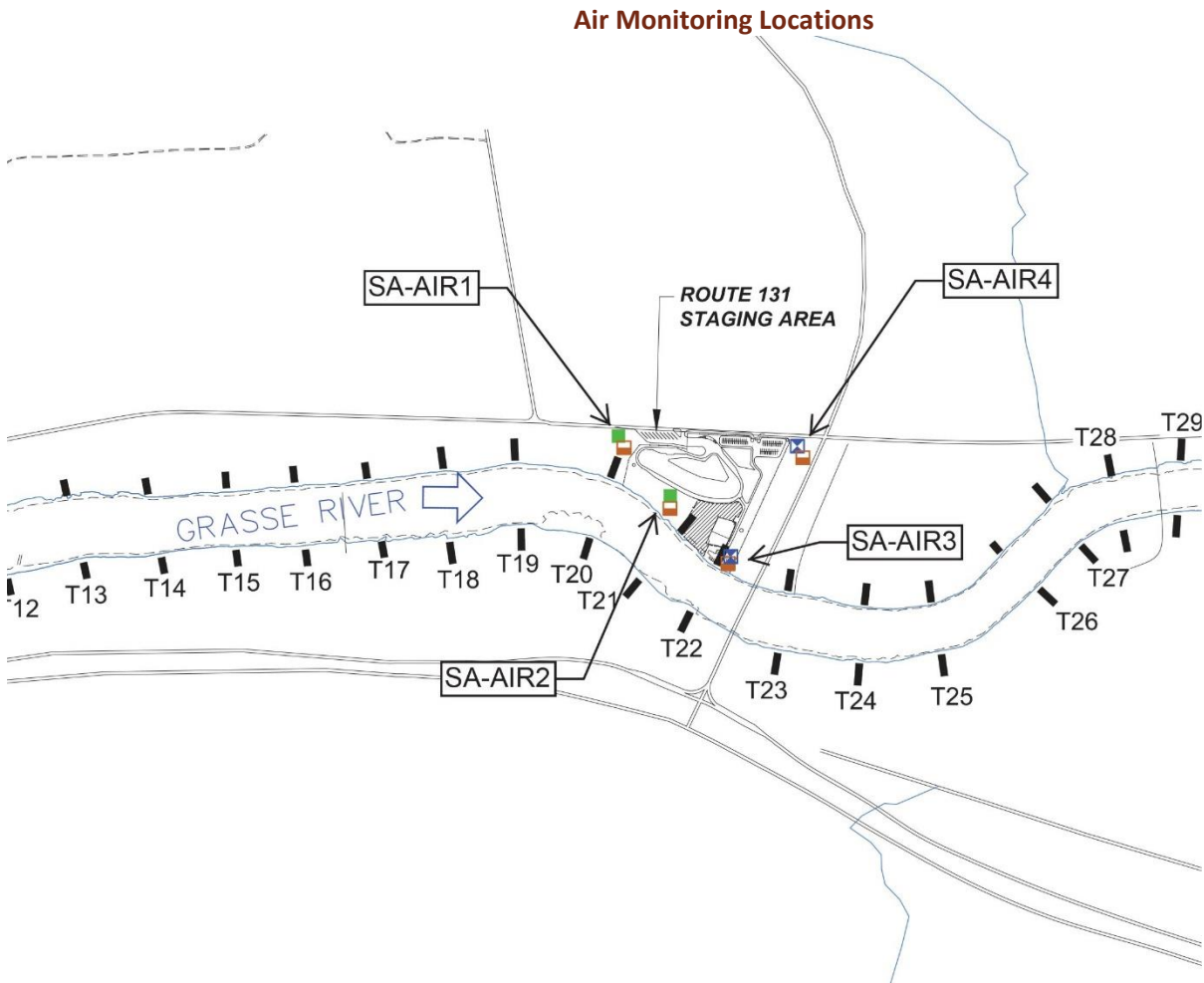
		Monitoring Station ID (see figure)						
Date	Action Level Check	SLF-AIR1	SLF-AIR2	SLF-AIR3	SLF-AIR4	SLF-AIR-PA	SLF-AIR-PB	Notes
Dec 1	All Below	0.000110	0.000270	0.000730	0.000150	Below Detectable Levels	--	--
Dec 2	All Below	0.000220	0.000390	0.001800	0.000410	--	--	--
Dec 3	All Below	0.000520	0.000240	0.000310	0.000410	--	--	--
Dec 4	All Below	0.000150	0.000250	0.000480	0.000110	Below Detectable Levels	--	--
Dec 5	All Below	Below Detectable Levels	0.000310	0.000420	0.000160	--	--	--

NA = Analysis not required

Total PCBs (micrograms per cubic meter)

Air Monitoring - 2018 Route 131 Staging Area Construction

Program includes particulate monitoring using real-time meters for particulates (or dust) and volatile organic compounds (VOCs) and sampling for PCB analytical testing. Corrective action levels have been established based on levels that are safe for the community for particulates, VOCs, and PCBs. The actual monitoring results are compared to the corrective action levels to determine if adjustments in construction are needed. The air monitoring locations and tabulated results are provided below.



2018 Air Particulate Data (Corrective Action Level = 0.150 milligram per cubic meter above upwind location)

		Monitoring Station ID (see figure)				
Date	Action Level Check	SA-AIR1	SA-AIR2	SA-AIR3	SA-AIR4	Notes
Monitoring activities not conducted at this location in December 2018.						

NA = Data not collected or recorded
 Particulates (milligrams per cubic meter)

2018 Air Volatile Organic Compound Data
(Corrective Action Level = 25 ppm above upwind location)

		Monitoring Station ID (see figure)				
Date	Action Level Check	SA-AIR1	SA-AIR2	SA-AIR3	SA-AIR4	Notes
Monitoring activities not conducted at this location in December 2018.						

NA = Data not collected or recorded
 Volatile Organic Compounds (VOCs parts per million)

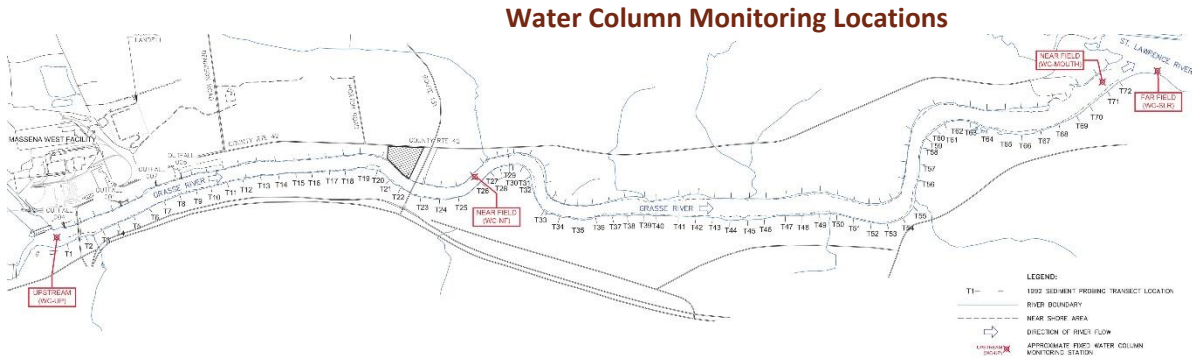
2018 Air PCB Data
(Corrective Action Level = 0.100 microgram per cubic meter)

		Monitoring Station ID (see figure)				
Date	Action Level Check	SA-AIR1	SA-AIR2	SA-AIR3	SA-AIR4	Notes
Monitoring activities not conducted at this location in December 2018.						

NA = Data not collected or recorded
 Total PCBs (micrograms per cubic meter)

Water Monitoring - 2018 Route 131 Staging Area Construction

Program includes turbidity monitoring using real-time meters for solids and PCB analytical testing at water column and water intake locations. Corrective action levels have been established based on levels that are safe for the community for both turbidity and PCBs. The actual monitoring results will be compared to the corrective action levels to determine if adjustments in construction are needed. The water locations and tabulated results are provided below.



2018 Water Column Turbidity Data (Corrective Action Level = 25 NTU above WC-UP Level)

		Monitoring Station ID (see figure)							
Date	Action Level Check	WC-UP (0.5x)	WC-NF (0.2x)	WC-NF (0.8x)	WC-MOUTH H (0.2x)	WC-MOUTH (0.8x)	WC-SLR (0.2x)	WC-SLR (0.8x)	Notes
Monitoring activities not conducted at this location in December 2018.									

Turbidity (nephelometric turbidity unit; NTU)

2018 Water Column PCB Data (Corrective Action Level = 0.5 microgram per liter)

		Monitoring Station ID (see figure)			
Date	Action Level Check	WC-NF	WC-MOUTH	WC-SLR	Notes
Monitoring activities not conducted at this location in December 2018.					

Total PCBs (micrograms per liter)

Water Intake Monitoring Locations



2018 Water Intake Turbidity Data (Corrective Action Level = 25 NTU above Baseline Level)

		Monitoring Station ID (see figure)			
Date	Action Level Check	IN-AE-RAW	IN-SRMT-RAW	IN-SRMT-FIL	Notes
Monitoring activities not conducted at this location in December 2018.					

NA = Data not collected or recorded

Turbidity (nephelometric turbidity unit; NTU)

2018 Water Intake PCB Data (Corrective Action Level = 0.5 microgram per liter)

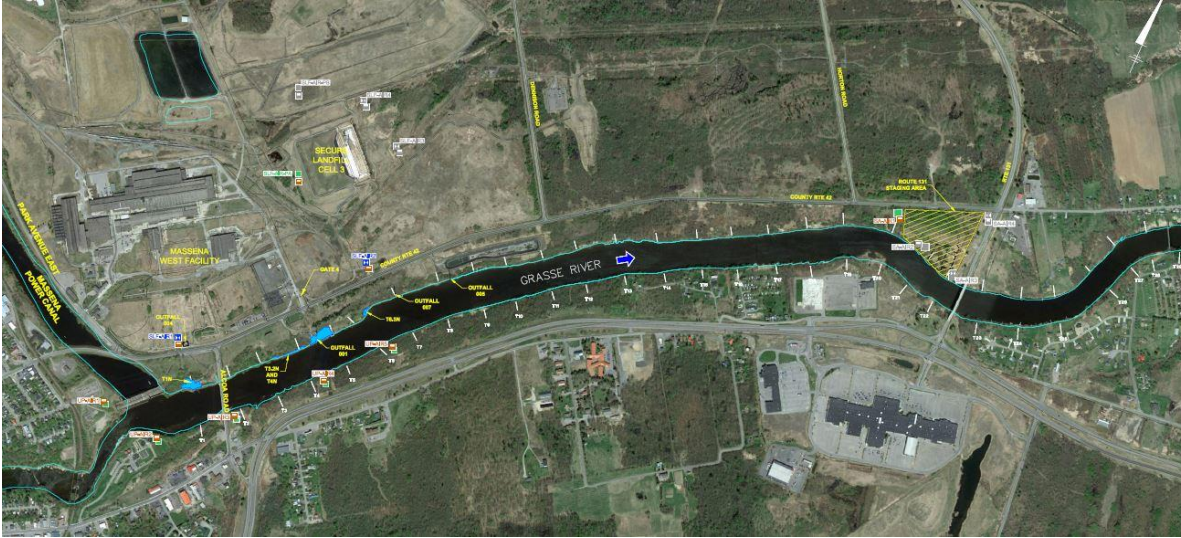
		Monitoring Station ID (see figure)			
Date	Action Level Check	IN-AE-RAW	IN-SRMT-RAW	IN-SRMT-FIL	Notes
Monitoring activities not conducted at this location in December 2018.					

Total PCBs (micrograms per liter)

Air Monitoring - 2018 Soil Removal Areas Along the North Shore

Program includes particulate monitoring using real-time meters for particulates (or dust) and volatile organic compounds (VOCs) and sampling for PCB analytical testing. Corrective action levels have been established based on levels that are safe for the community for particulates, VOCs, and PCBs. The actual monitoring results are compared to the corrective action levels to determine if adjustments in construction are needed. The air monitoring locations and tabulated results are provided below.

Air Monitoring Locations



2018 Air Particulate Data (Corrective Action Level = 0.150 milligram per cubic meter above upwind location)

Date	Action Level Check	Monitoring Station ID (see figure)									Notes
		UP-AIR1	UP-AIR2	UP-AIR3	UP-AIR4	UP-AIR5	SLF-AIR1	SLF-AIR2	SLF-AIRPA	SA-AIR1	
Dec 1	All Below	0.0137	--	0.0143	0.0106	0.0101	0.0119	0.0141	0.01	0.014	--
Dec 2	All Below	0.0192	--	0.0198	0.0116	0.0113	0.019	0.0261	0.011	0.0195	--
Dec 4	All Below	0.0173	--	0.0122	0.0088	0.0109	0.0102	0.0199	0.0141	0.0165	--
Dec 5	All Below	0.0217	--	0.0214	0.025	0.0209	0.02	0.0201	0.0135	0.0191	--
Dec 6	All Below	0.0755	--	0.0938	0.0339	0.057	0.0537	0.0961	0.0537	0.0722	--

		Monitoring Station ID (see figure)									
Date	Action Level Check	UP-AIR1	UP-AIR2	UP-AIR3	UP-AIR4	UP-AIR5	SLF-AIR1	SLF-AIR2	SLF-AIRPA	SA-AIR1	Notes
Dec 7	All Below	0.0391	--	0.0432	0.0327	0.0322	0.0393	0.0466	0.0307	0.0743	--
Dec 8	All Below	0.0431	--	0.0319	0.0377	0.0435	0.0323	0.0477	0.0282	0.0386	--
Dec 9	All Below	0.0375	--	0.0525	0.0442	0.0465	0.0477	0.0614	0.1019	0.053	--
Dec 11	All Below	0.0584	--	0.0609	0.0233	0.0334	0.0347	0.0463	0.0306	0.0361	--
Dec 12	All Below	0.0849	--	0.0845	0.0664	0.0624	0.0715	0.0961	0.0617	0.0867	--
Dec 13	All Below	0.147	--	0.0791	0.0695	0.0647	0.0779	0.0807	0.0714	0.1324	--
Dec 14	All Below	0.0566	--	0.0576	0.0409	0.0407	0.049	0.0655	0.0417	0.0732	--
Dec 15	All Below	0.0653	--	0.0659	0.0496	0.0467	0.0591	0.0748	0.0463	0.0777	--
Dec 18	All Below	0.0609	--	0.0567	0.0447	0.0434	0.039	0.0492	0.001	0.0532	--
Dec 19	All Below	0.0819	--	0.0777	0.0367	0.035	0.0753	0.0689	0.002	0.0381	--
Dec 20	All Below	0.0169	--	0.0424	0.0286	0.0322	0.0327	0.0471	0.001	0.0751	--
Dec 21	All Below	0.0304	--	0.0571	0.031	0.0552	0.0537	0.0615	0.0463	0.0821	--

NA = Data not collected or recorded
 Particulates (milligrams per cubic meter)

2018 Air Volatile Organic Compound Data
(Corrective Action Level = 25 ppm above upwind location)

		Monitoring Station ID (see figure)									
Date	Action Level Check	UP-AIR1	UP-AIR2	UP-AIR3	UP-AIR4	UP-AIR5	SLF-AIR1	SLF-AIR2	SLF-AIR-PA	SA-AIR1	Notes
Dec 1	All Below	0	--	0.0059	0.1017	0.0001	0.0193	0.0015	0.0493	0.1276	--
Dec 2	All Below	0	--	0.0065	0.0897	0.0051	0.0571	0.0045	0.025	0.0747	--
Dec 4	All Below	0	--	0.0043	0.2919	0.0206	0.1032	0.0131	0.6306	0.5263	--

		Monitoring Station ID (see figure)									
Date	Action Level Check	UP-AIR1	UP-AIR2	UP-AIR3	UP-AIR4	UP-AIR5	SLF-AIR1	SLF-AIR2	SLF-AIR-PA	SA-AIR1	Notes
Dec 5	All Below	0	--	0.0027	0.2974	0.0169	0.0455	0.0155	0.1126	0.4403	--
Dec 6	All Below	0.2068	--	0.0471	0.1141	0.419	5.433	0.0309	0.0307	0.3072	--
Dec 7	All Below	0	--	0.015	0.0411	0.0152	4.7299	0.0107	0.0261	0.1612	--
Dec 8	All Below	0.0757	--	0.0392	0.1023	0.0181	3.4843	0.0211	0	0.1615	--
Dec 9	All Below	0.1544	--	0.0403	0.1046	0.0199	0	0	0.0581	0.497	--
Dec 11	All Below	1.8871	--	0.0588	0.3087	0.1465	0.055	0.0048	0.1463	0.471	--
Dec 12	All Below	0.9899	--	0.0532	0.2726	0.1426	0.03	0.0171	0.1485	0.2194	--
Dec 13	All Below	1.1372	--	0.0041	0.0619	0.0143	0.0369	0.0019	0.2069	0.6007	--
Dec 14	All Below	0.001	--	0.0002	0.0273	0.0003	0.0645	0	0.1527	0.2429	--

NA = Data not collected or recorded
Volatile Organic Compounds (VOCs parts per million)

2018 Air PCB Data
(Corrective Action Level = 0.100 micrograms per cubic meter)

		Monitoring Station ID (see figure)									
Date	Action Level Check	UP-AIR1	UP-AIR2	UP-AIR3	UP-AIR4	UP-AIR5	SLF-AIR1	SLF-AIR2	SLF-AIR-PA	SA-AIR1	Notes
Dec 1	All Below	Below Detectable Levels	--	Below Detectable Levels	Below Detectable Levels	Below Detectable Levels	0.000110	0.000270	Below Detectable Levels	Below Detectable Levels	--
Dec 2	All Below	Below Detectable Levels	--	Below Detectable Levels	Below Detectable Levels	Below Detectable Levels	0.000220	0.000390	Below Detectable Levels	Below Detectable Levels	--
Dec 4	All Below	Below Detectable Levels	--	Below Detectable Levels	Below Detectable Levels	Below Detectable Levels	0.000150	0.000250	Below Detectable Levels	Below Detectable Levels	--
Dec 5	All Below	--	--	--	--	--	Below Detectable Levels	0.000310	--	Below Detectable Levels	--

NA = Data not collected or recorded
Total PCBs (micrograms per cubic meter)

Air Monitoring - 2018 In-river Capping Test

Program includes particulate monitoring using real-time meters for particulates (or dust) as all material being handled is clean. Corrective action levels have been established based on levels that are safe for the community. The actual monitoring results are compared to the corrective action levels to determine if adjustments in construction are needed. The air monitoring locations and tabulated results are provided below.

Air Monitoring Locations



2018 Air Particulate Data
(Corrective Action Level = 0.150 milligrams per cubic meter above upwind location)

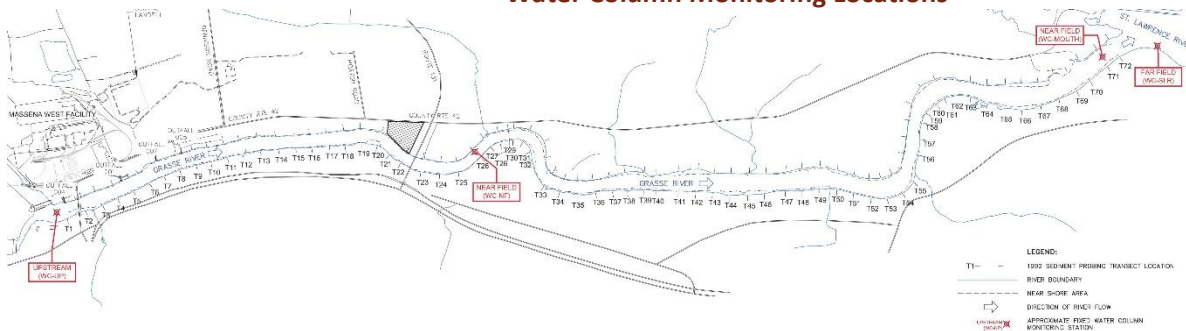
		Monitoring Station ID (see figure)				
Date	Action Level Check	EP-AIR1	EP-AIR2	EP-AIR3	EP-AIR4	Notes
Dec 1	All Below	0.0161	0.03152	0.015	0.0159	--

NA = Data not collected or recorded
 Particulates (milligrams per cubic meter)

Water Monitoring - 2018 In-river Capping Test

Program includes turbidity monitoring using real-time meters for solids and PCB analytical testing at water column and water intake locations. Corrective action levels have been established based on levels that are safe for the community for both turbidity and PCBs. The actual monitoring results will be compared to the corrective action levels to determine if adjustments in construction are needed. The water locations and tabulated results are provided below.

Water Column Monitoring Locations



2018 Water Column Turbidity Data
Corrective Action Level = 25 NTU above WC-UP Level

		Monitoring Station ID (see figure)							
Date	Action Level Check	WC-UP (0.5x)	WC-NF (0.2x)	WC-NF (0.8x)	WC-MOUTH (0.2x)	WC-MOUTH (0.8x)	WC-SLR (0.2x)	WC-SLR (0.8x)	Notes
Monitoring activities not conducted at this location in December 2018.									

Turbidity (nephelometric turbidity unit; NTU)

2018 Water Column PCB Data

Corrective Action Level = 0.5 microgram per liter

		Monitoring Station ID (see figure)			
Date	Action Level Check	WC-NF	WC-MOUTH	WC-SLR	Notes
Monitoring activities not conducted at this location in December 2018.					

Total PCBs (micrograms per liter)

Water Intake Monitoring Locations



2018 Water Intake Turbidity Data

(Corrective Action Level = 25 NTU above Baseline Level)

		Monitoring Station ID (see figure)			
Date	Action Level Check	IN-AE-RAW	IN-SRMT-RAW	IN-SRMT-FIL	Notes
Monitoring activities not conducted at this location in December 2018.					

NA = Data not collected or recorded

Turbidity (nephelometric turbidity unit; NTU)

2018 Water Intake PCB Data
(Corrective Action Level = 0.5 micrograms per liter)

		Monitoring Station ID (see figure)			
Date	Action Level Check	IN-AE-RAW	IN-SRMT-RAW	IN-SRMT-FIL	Notes
Monitoring activities not conducted at this location in December 2018.					

Total PCBs (micrograms per liter)